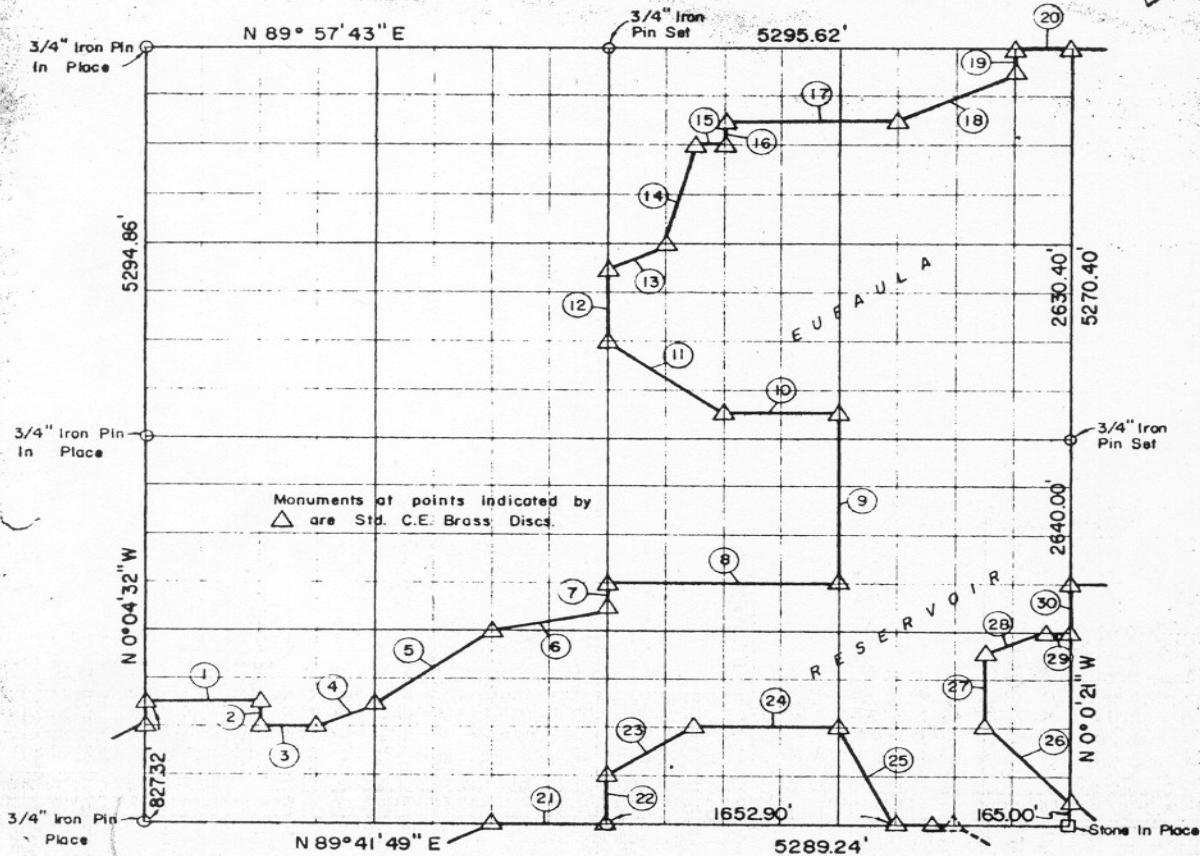


SEC. 12, TION, R18E McINTOSH COUNT



Course No.	Distance	Bearing	Course No.	Distance	Bearing
1	661.28'	N 89° 43' 19" E	17	992.82'	N 89° 55' 39" E
2	165.41'	S 0° 04' 01" E	18	739.43'	N 63° 30' 50" E
3	330.63'	N 89° 43' 01" E	19	164.47'	N 0° 00' 37" W
4	370.25'	N 63° 11' 34" E	20	330.98'	N 89° 57' 43" E
5	828.12'	N 52° 56' 21" E	21	661.16'	N 89° 41' 49" E
6	682.30'	N 75° 43' 24" E	22	330.47'	N 0° 02' 27" W
7	165.23'	N 0° 02' 27" W	23	597.11'	N 56° 06' 49" E
8	1322.81'	N 89° 44' 50" E	24	826.57'	N 89° 43' 01" E
9	1155.37'	N 0° 01' 24" W	25	737.14'	S 26° 37' 52" E
10	661.58'	N 89° 47' 21" E	26	699.00'	S 45° 11' 56" E
11	824.97'	S 53° 21' 24" E	27	495.13'	N 0° 00' 45" W
12	494.80'	N 0° 02' 27" W	28	370.22'	N 63° 15' 48" E
13	369.94'	N 63° 23' 36" E	29	165.34'	N 89° 44' 14" E
14	680.03'	N 14° 02' 44" E	30	330.00'	N 0° 00' 21" W
15	165.46'	N 89° 54' 57" E			
16	164.80'	N 0° 01' 56" W			

*16,482.82*

Book No. E-1031 Date: September, 1965

193



I, Herman E. Smith, a Registered Professional Engineer, do hereby certify that the above plat is a true and accurate survey of Sec. 12, TION, R18E as made under my supervision.

*Herman E. Smith*  
 HERMAN E. SMITH  
 Reg. Prof. Engr. No. 1417