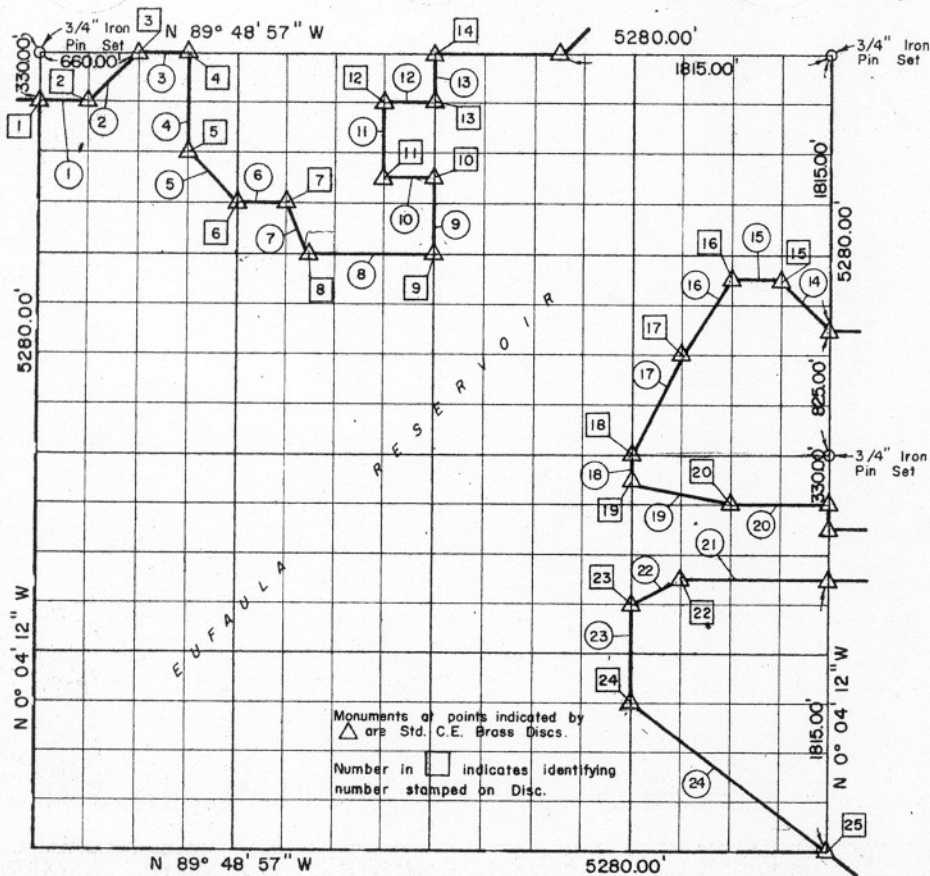


Sec. 14, TION, R18E McINTOSH COUNTY



Course No.	Distance	Bearing	Course No.	Distance	Bearing
1	330.00'	S 89° 48' 57" E	17	736.59'	S 26° 32' 44" W
2	465.66'	N 45° 03' 27" E	18	165.00'	S 0° 04' 12" E
3	330.00'	S 89° 48' 57" E	19	681.02'	S 75° 47' 41" E
4	660.00'	S 0° 04' 12" E	20	660.00'	S 89° 48' 57" E
5	467.72'	S 44° 56' 34" E	21	990.00'	N 89° 48' 57" W
6	330.00'	S 89° 48' 57" E	22	368.30'	S 63° 34' 07" W
7	369.60'	S 26° 35' 02" E	23	660.00'	S 0° 04' 12" E
8	825.00'	S 89° 48' 57" E	24	1653.51'	S 53° 02' 15" E
9	495.00'	N 0° 04' 12" W			
10	330.00'	N 89° 48' 57" W			
11	495.00'	N 0° 04' 12" W			
12	330.00'	S 89° 48' 57" E			
13	330.00'	N 0° 04' 12" W			
14	467.72'	N 44° 56' 34" W			
15	330.00'	N 89° 48' 57" W			
16	593.70'	S 33° 41' 55" W			

Book No. E-1004

Date: February, 1965

206



13,063.82 ✓

I, Herman E. Smith, a Registered Professional Engineer, do hereby certify that the above plat is a true and accurate survey of Sec. 14, TION, R18E as made under my supervision.

*Herman E. Smith*  
HERMAN E. SMITH  
Reg. Prof. Engr. No. 1417