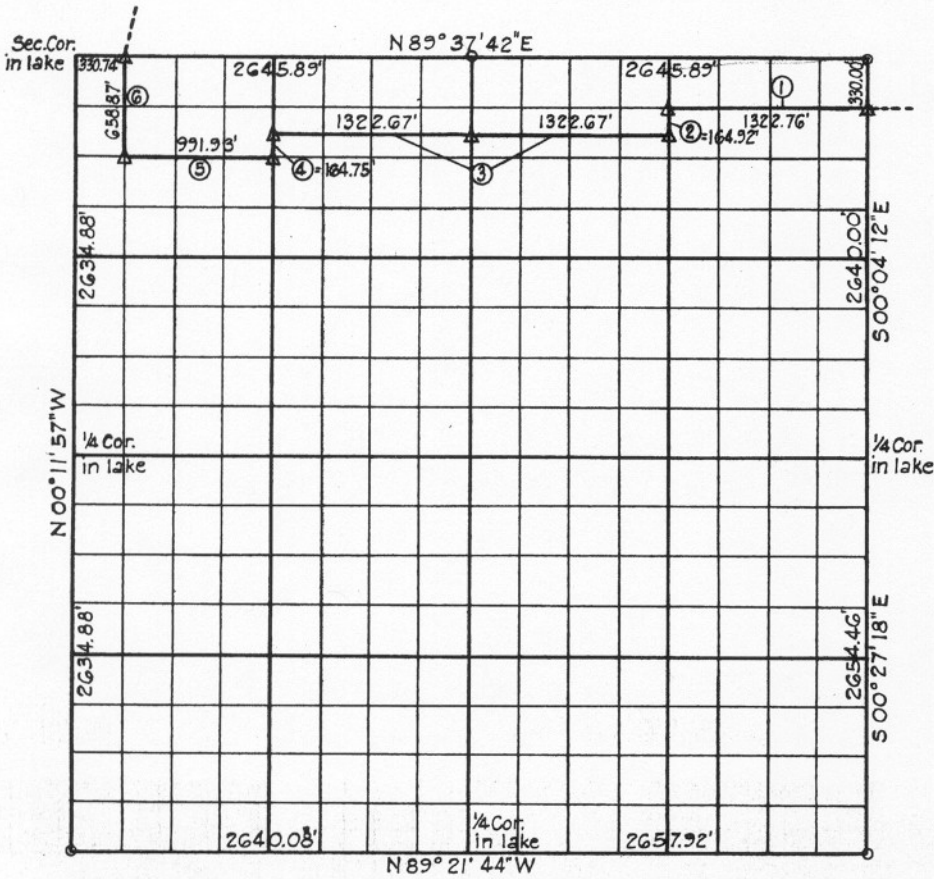


S. 15 T. 10N R. 18E COUNTY McINTOSH



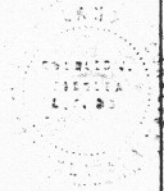
| Course Number | Distance | Bearing         | Course Number | Distance | Bearing |
|---------------|----------|-----------------|---------------|----------|---------|
| 1             | 1322.76  | N 89° 37' 16" W |               |          |         |
| 2             | 164.92   | S 0° 06' 08" E  |               |          |         |
| 3             | 2645.34  | N 89° 37' 02" W |               |          |         |
| 4             | 164.76   | S 0° 10' 01" E  |               |          |         |
| 5             | 991.98   | N 89° 36' 49" W |               |          |         |
| 6             | 658.87   | N 0° 11' 28" W  |               |          |         |

Book No. E-1116

Date: May, 1971

205

I, Charles J. Finkles, hereby certify that the above plat is a true and correct representation of the survey made in Section 15, T10N, R18E.



- LEGEND**
- Δ Monument
  - Original Stone
  - Iron Pin

*Charles J. Finkles*  
 Registered Land Surveyor No. 35