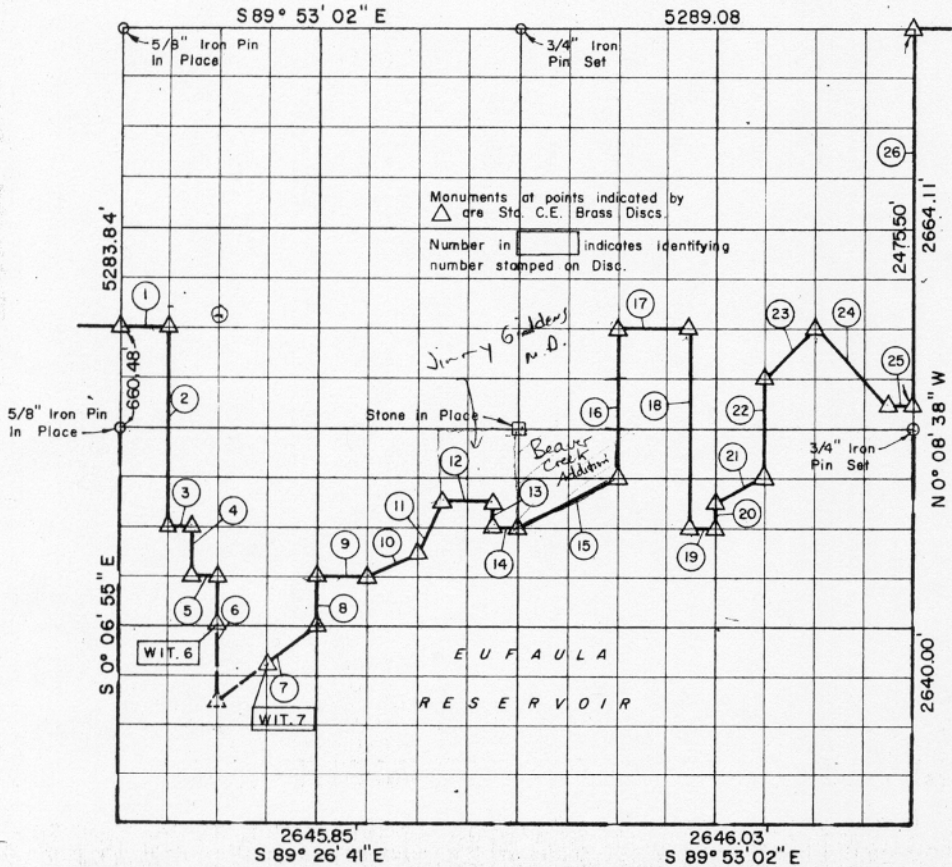


C. 20, TION, RIBE McINTOSH COUNTY



Course No.	Distance	Bearing	Course No.	Distance	Bearing
1	330.64'	S 89° 31' 24" E	17	495.94'	S 89° 53' 02" E
2	1321.59'	S 0° 07' 01" E	18	1326.01'	S 0° 08' 06" E
3	165.34'	S 89° 24' 49" E	19	165.34'	S 89° 53' 02" E
4	330.20'	S 0° 07' 04" E	20	165.00'	N 0° 08' 09" W
5	165.34'	S 89° 25' 07" E	21	368.90'	N 63° 32' 51" E
6	825.45'	S 0° 07' 06" E	22	663.01'	N 0° 08' 16" W
7	821.46'	N 53° 30' 01" E	23	468.23'	N 44° 47' 01" E
8	330.12'	N 0° 07' 18" W	24	705.51'	S 44° 48' 32" E
9	330.69'	S 89° 25' 07" E	25	165.33'	S 89° 53' 02" E
10	367.75'	N 63° 55' 14" E	26	2497.60'	N 0° 08' 38" W
11	367.31'	N 26° 37' 30" E			
12	330.68'	S 89° 24' 39" E			
13	165.01'	S 0° 07' 37" E			
14	165.34'	S 89° 24' 49" E			
15	737.85'	N 63° 32' 57" E			
16	996.03'	N 0° 07' 55" W			

Book No. E-1002 Date: February, 1965 222

14,771.67 ✓

I, Herman E. Smith, a Registered Professional Engineer, do hereby certify that the above plat is a true and accurate survey of Sec. 20, TION, RIBE as made under my supervision.

Herman E. Smith
 HERMAN E. SMITH
 Reg. Prof. Engr. No. 1417