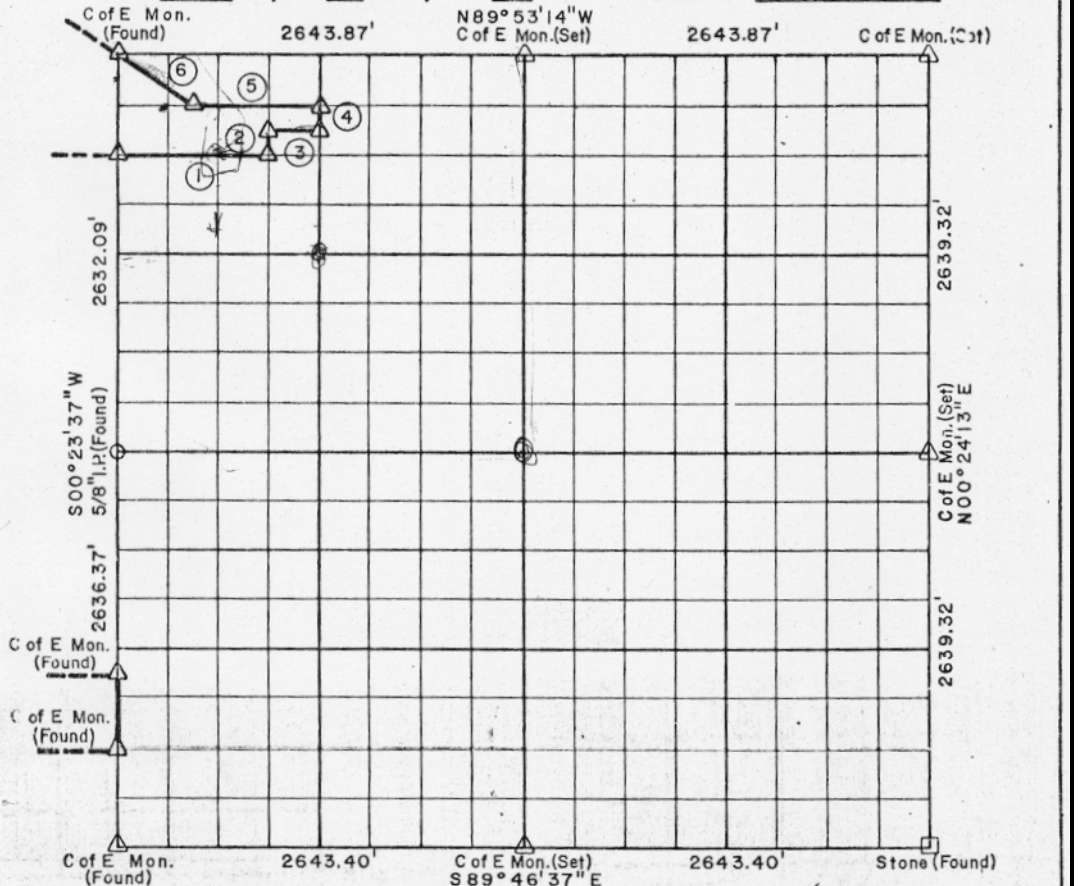


642

PARTIAL BOUNDARY SURVEYS
 EUFAULA LAKE
 CANADIAN RIVER, OKLAHOMA

Performed Under Contract Number DACW 56-77-C-0269

SEC. 24 , T-10-N , R-18-E COUNTY McINTOSH



Course No.	Distance	Bearing	Course No.	Distance	Bearing
1	991.43'	S89°52'04" E			
2	164.59'	N00°23'44" E			
3	330.48'	S89°52'21" E			
4	164.62'	N00°23'46" E			
5	826.20'	N89°52'39" W			
6	593.67'	N56°13'20" W			

STATE OF OKLAHOMA)
 COUNTY OF MCINTOSH)
 I, County Clerk, do hereby certify that this
 instrument was filed for record
 and duly recorded in my office
 at 8 o'clock, 44 minutes, A.M.
 in Book 212, Page 612
 IKE E. WILSON, County Clerk
 By [Signature] Deputy

Field Book No. E-1363 Date MARCH, 1978

OF SURVEY
 CERTIFY THAT THE EUGENE R. BUTLER ASSOCIATES, INC.
 IS A TRUE AND FAITHFUL REPRESENTATION OF U.S. 246
 MADE IN SECTION 24, T-10-N, R-18-E, McINTOSH COUNTY, OKLAHOMA.
 U.S. ARMY ENGINEER DISTRICT, TULSA
 CORPS OF ENGINEERS
 SHEET 1 of 2

LEGEND
 ▲ MONUMENT
 □ ORIGINAL CORNER
 ○ IRON PIN
 ● COMPUTED INSTANCE

224 226

