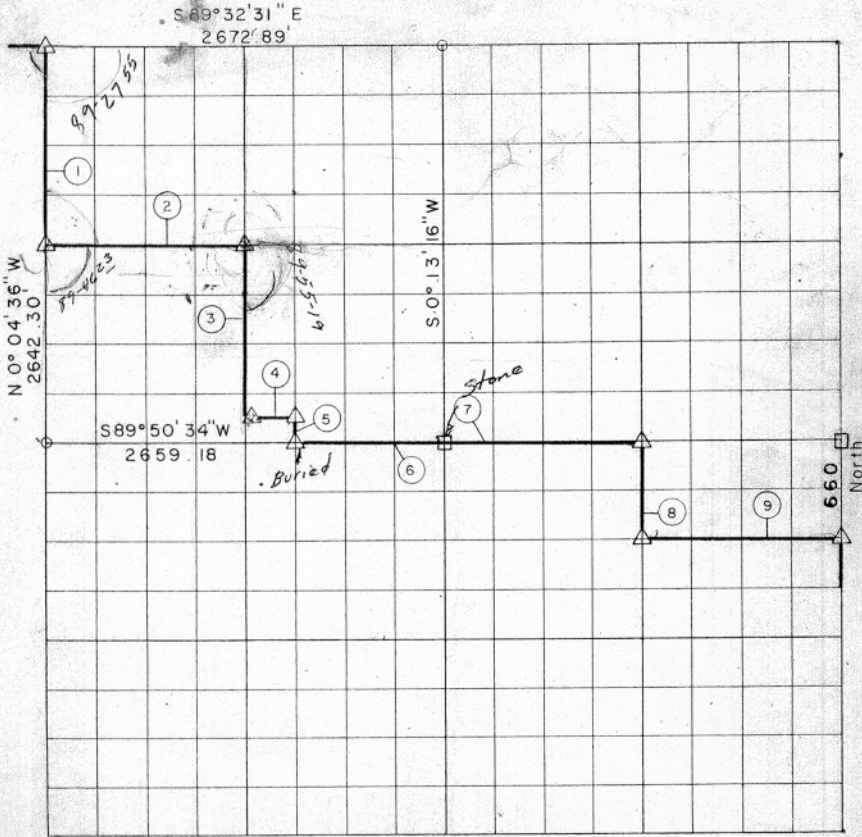


SEC. 25, TION, R 18 E, McINTOSH COUNTY



Course No.	Distance	Bearing	Course No.	Distance	Bearing
1	1321.15'	S 0° 04' 36" E			
2	1333.02'	S 89° 50' 59" E			
3	1149.74'	S 0° 04' 20" W			
4	332.51'	N 89° 52' 52" E			
5	164.02'	S 0° 06' 34" W			
6	997.19'	N 89° 50' 34" E			
7	1321.13'	N 89° 42' 01" E			
8	660.00'	S 0° 01' 30" E			
9	1320.85'	N 89° 46' 05" E			

859961

Book No. E-893

Date: July, 1964

Note: Government Boundary Mark between No. 3 & No. 4 is Set 1 Foot East of True Corner.

239

I, James E. Curry, a Registered Professional Engineer, do hereby certify that the above plat is a true and accurate survey of Sec. 25, TION, R 18 E as made under my supervision.

*James E. Curry*  
 JAMES E. CURRY  
 Reg. Prof. Engr. No. 1872