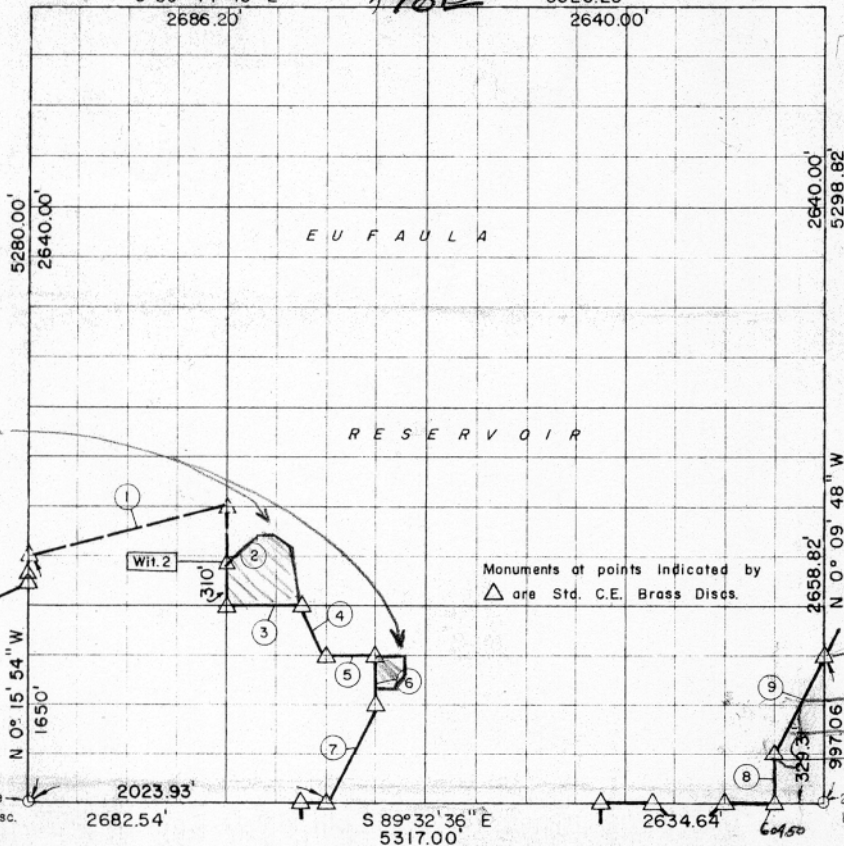


SEC. 31, TION, E, HASKELL COUN

S 89° 44' 49" E <sup>R18E</sup> 5326.20'  
 2686.20' 2640.00'



Monuments at points indicated by  
 Δ are Std. C.E. Brass Discs.

QUITCLAIM  
 DEED  
 TO  
 MASON  
 25 JAN 67

EP.  
 610.09  
 605.70  
 601.86  
 594.00

4" Iron Pipe  
 W/ Brass Disc.  
 In Place

2" Iron Pipe  
 In Place

| Course No. | Distance | Bearing         | Course No. | Distance | Bearing |
|------------|----------|-----------------|------------|----------|---------|
| 1          | 1401.74' | N 76° 41' 18" E |            |          |         |
| 2          | 661.21'  | S 0° 15' 17" E  |            |          |         |
| 3          | 494.22'  | S 89° 38' 42" E |            |          |         |
| 4          | 371.17'  | S 26° 35' 14" E |            |          |         |
| 5          | 329.44'  | S 89° 37' 10" E |            |          |         |
| 6          | 331.04'  | S 0° 13' 55" E  |            |          |         |
| 7          | 735.92'  | S 26° 20' 57" W |            |          |         |
| 8          | 332.21'  | N 0° 10' 15" W  |            |          |         |
| 9          | 738.75'  | N 26° 18' 40" E |            |          |         |
| 5395.70    |          |                 |            |          |         |

Book No. E-1025 Date: September, 1965

251

I, Herman E. Smith, a Registered Professional Engineer, do hereby certify that the above plat is a true and accurate survey of Sec. 31, TION, R18E as made under my supervision.

*Herman E. Smith*  
 HERMAN E. SMITH  
 Reg. Prof. Engr. No. 1417

5392