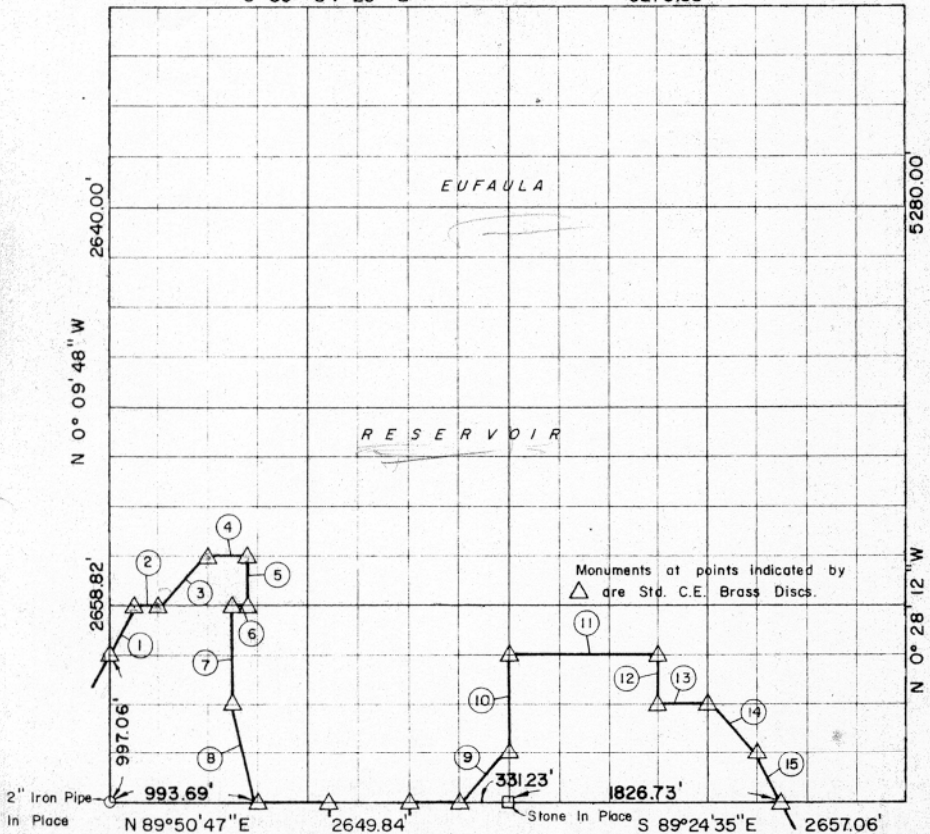


SEC. 32, TION, E, HASKELL COUN

R18E

S 89° 34' 26" E 5278.68'



Course No.	Distance	Bearing	Course No.	Distance	Bearing
1	370.48'	N 26° 21' 37" E			
2	165.45'	S 89° 51' 52" E			
3	467.07'	N 44° 55' 06" E			
4	300.00'	S 89° 47' 32" E			
5	331.14'	S 0° 11' 32" E			
6	132.56'	N 89° 07' 47" E			
7	662.62'	S 0° 11' 58" E			
8	683.14'	S 14° 13' 46" E			
9	466.36'	N 44° 58' 32" E			
10	658.03'	N 0° 16' 44" W			
11	995.17'	S 89° 28' 19" E			
12	329.39'	S 0° 21' 02" E			
13	331.85'	S 89° 27' 04" E			
14	471.59'	S 45° 06' 48" E			
15	371.65'	S 26° 56' 07" E			
6734.50					

Book No. E-1026 Date: September, 1965

252

I, Herman E. Smith, a Registered Professional Engineer, do hereby certify that the above plat is a true and accurate survey of Sec. 32, TION, R18E as made under my supervision.

6731

*Herman E. Smith*  
 HERMAN E. SMITH  
 Reg. Prof. Engr. No. 1417