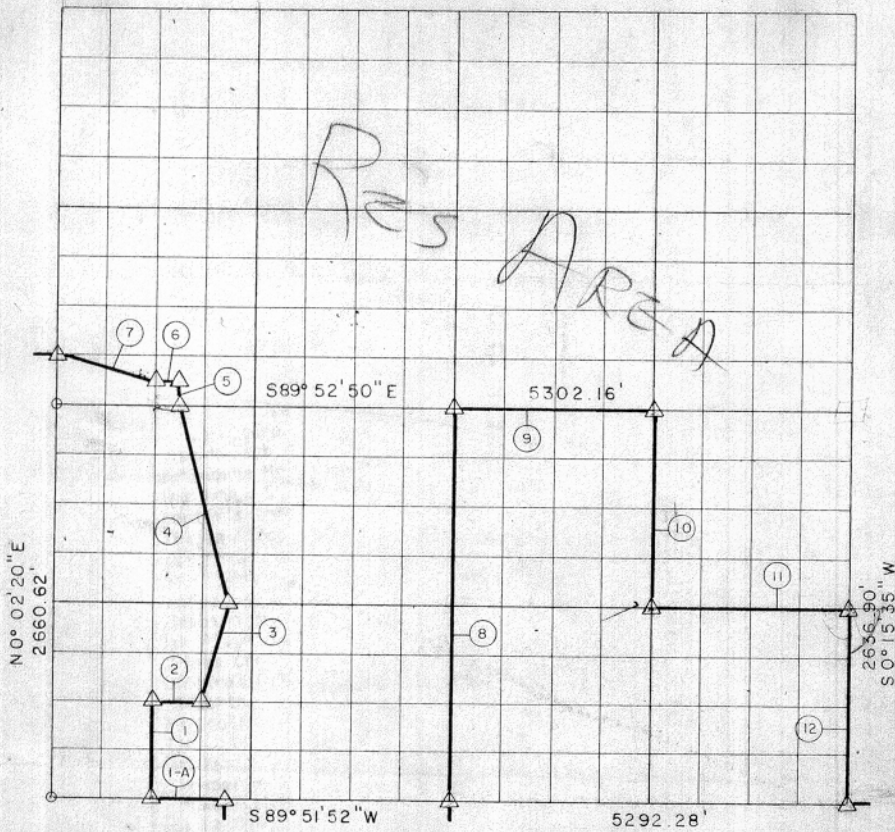


6621  
 SEC. 35, TION, RIVE, HASKELL COUNTY, ✓

*RES AREA*



Course No.	Distance	Bearing	Course No.	Distance	Bearing
1-A	496.14'	S 89° 51' 52" W			
1	664.41'	N 0° 04' 00" E			
2	330.92'	N 89° 55' 40" E			
3	684.59'	N 14° 04' 00" E			
4	1368.63'	N 13° 55' 30" W			
5	100.00'	N 0° 04' 25" E			
6	165.70'	N 89° 52' 50" W			
7	701.79'	N 70° 44' 58" W			
8	2648.76'	N 0° 09' 00" E			
9	1325.54'	S 89° 52' 50" E			
10	1321.42'	S 0° 12' 15" W			
11	1324.30'	N 89° 59' 30" E			
12	1318.45'	S 0° 15' 35" W			
	12450.65				

Book No. E-883

Date: July, 1964

255

\*  
 I, James E. Curry, a Registered Professional Engineer, do hereby certify that the above plat is a true and accurate survey of Sec. 35, TION, RIVE as made under my supervision.

12448

*James E. Curry*  
 JAMES E. CURRY  
 Reg. Prof. Eng. No. 1872