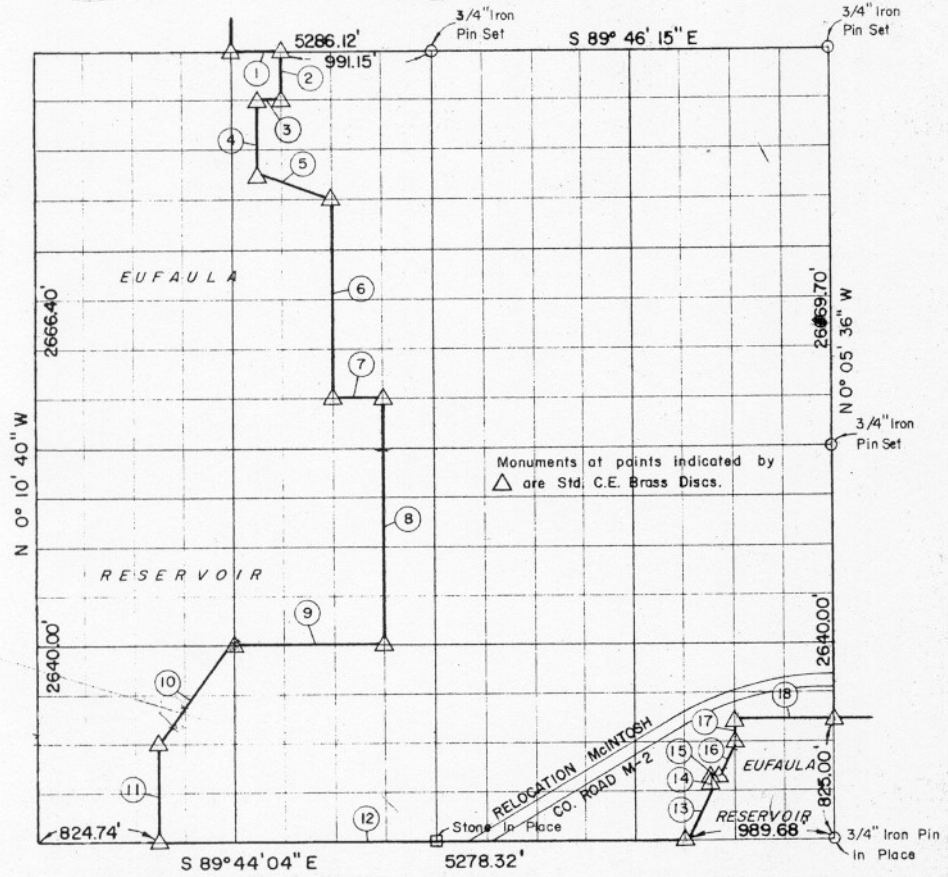


Sec. 3, TION, R 18E McINTOSH COUNTY



Course No.	Distance	Bearing	Course No.	Distance	Bearing
1	330.38'	S 89° 46' 15" E	17	165.00'	N 0° 06' 14" W
2	357.43'	S 0° 09' 05" E	18	6599.4'	S 89° 44' 04" E
3	165.18'	N 89° 44' 06" W	Note: Courses 14 & 15 at R. of Cemetery.		
4	495.00'	S 0° 09' 14" E			
5	523.33'	S 71° 21' 26" E			
6	1320.00'	S 0° 08' 46" E			
7	330.17'	S 89° 44' 05" E			
8	1650.00'	S 0° 08' 27" E			
9	990.05'	N 89° 44' 04" W			
10	822.04'	S 36° 51' 39" W			
11	660.00'	S 0° 09' 52" E			
12	3463.90'	S 89° 44' 04" E			
13	423.32'	N 26° 31' 40" E			
14	20.37'	N 0° 05' 36" W			
15	10.18'	S 89° 44' 04" E			
16	289.92'	N 26° 31' 40" E			

12,676.21

Book No. E-1029 Date: September, 1965

176

I, Herman E. Smith, a Registered Professional Engineer, do hereby certify that the above plat is a true and accurate survey of Sec. 3, TION, R18E as made under my supervision.

*Herman E. Smith*  
 HERMAN E. SMITH  
 Reg. Prof. Engr. No. 1417