

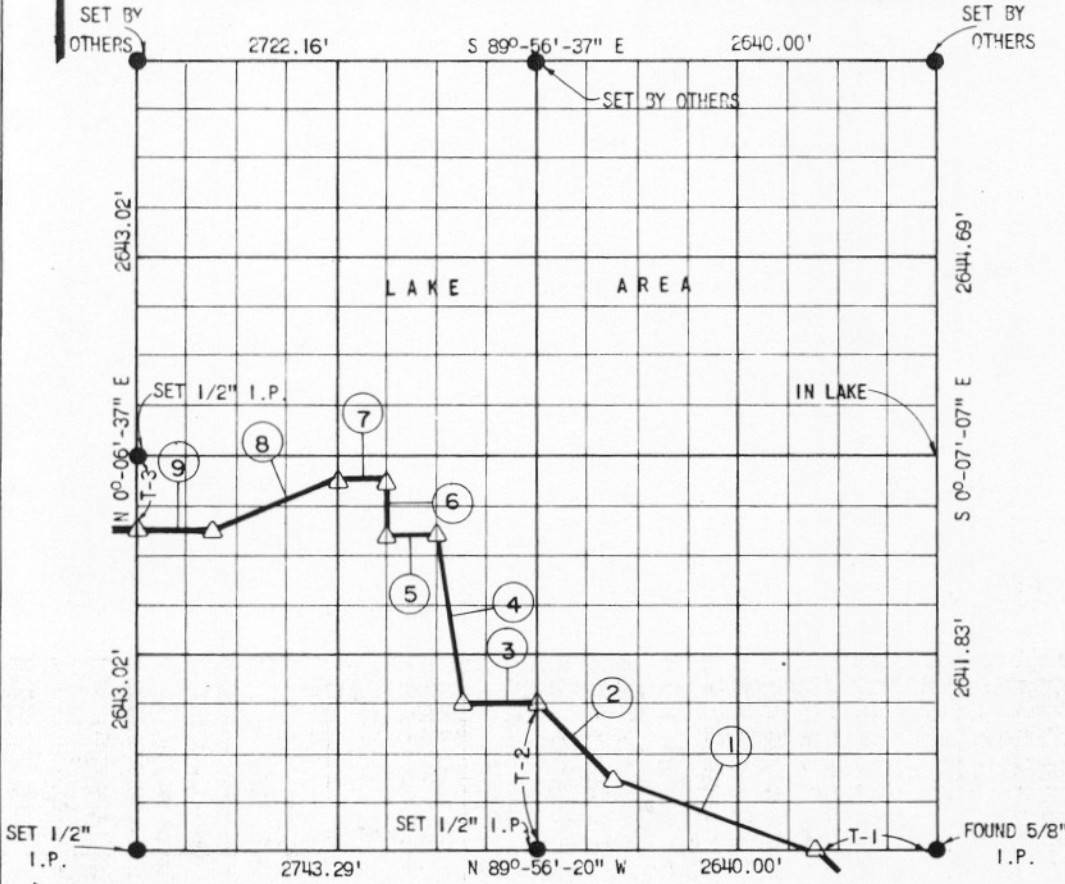
N

LEGEND
 MONUMENT SET
 ORIGINAL CORNER FOUND
 IRON PIN

PARTIAL BOUNDARY SURVEYS
 EUFAULA LAKE, AREA "K"
 CANADIAN RIVER, OKLAHOMA.

Performed Under Contract Number DACW 56-72-C-0017

SEC 6 T 10 N R 18 E COUNTY McINTOSH



Course No.	Distance	Bearing	Course No.	Distance	Bearing
①	1411.34'	S 69°-23'-18" E	T-1	825.00'	N 89°-56'-20" W
②	701.43'	S 45°-00'-10" E	T-2	990.90'	N 0°-07'-07" W
③	494.99'	S 89°-56'-02" E	T-3	495.57'	N 0°-06'-37" E
④	1168.36'	S 8°-14'-15" E			
⑤	329.99'	S 89°-55'-42" E			
⑥	330.32'	S 0°-07'-08" E			
⑦	329.99'	S 89°-55'-36" E			
⑧	387.65'	N 68°-13'-25" E			
⑨	589.71'	S 89°-55'-43" E			

CERTIFICATE OF SURVEY Field Book No. E-1173 Date DEC. 1971
 SURVEYED BY

WHEELER & ASSOCIATES, ENGINEERS-SURVEYORS
 Under the Supervision of

U.S. ARMY ENGINEER DISTRICT, TULSA
 CORPS OF ENGINEERS
 SHEET 5 OF 8

I HEREBY CERTIFY THAT THE ABOVE PLAT IS A TRUE AND CORRECT REPRESENTATION OF THE SURVEY MADE IN SECTION 6 T-10-N, R-18-E MCINTOSH COUNTY OKLAHOMA
 W. W. Wheeler
 REGISTERED LAND SURVEYOR

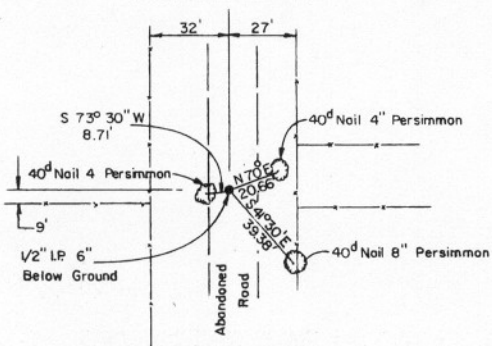


173

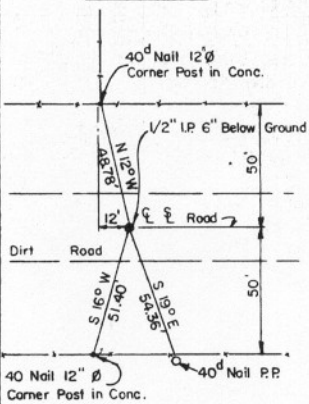
EUFAULA LAKE
 CANADIAN RIVER, OKLAHOMA
SECTION AND QUARTER SECTION CORNER
REFERENCES FOR
SEC. 6 TION, R 18 E **COUNTY MINTOSH**



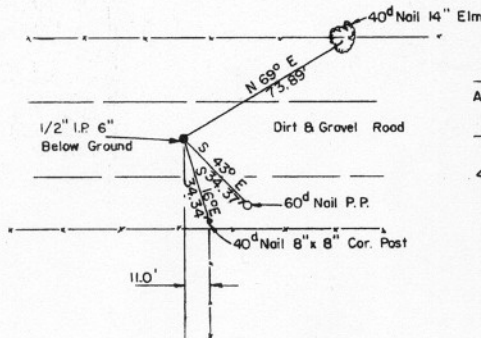
WEST 1/4 CORNER



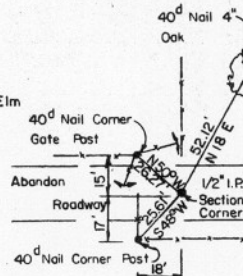
S. W. CORNER



SO. 1/4 CORNER



S. E. CORNER



Scale: 1" = 50'
 Date DEC. 1971
 Field book No. E-1173

SURVEYED BY
WHEELER & ASSOCIATES, ENGINEERS-SURVEYORS
TULSA, OKLAHOMA

LEGEND
 △ Monument Set
 □ Original Corner Found
 ● Iron Pin