

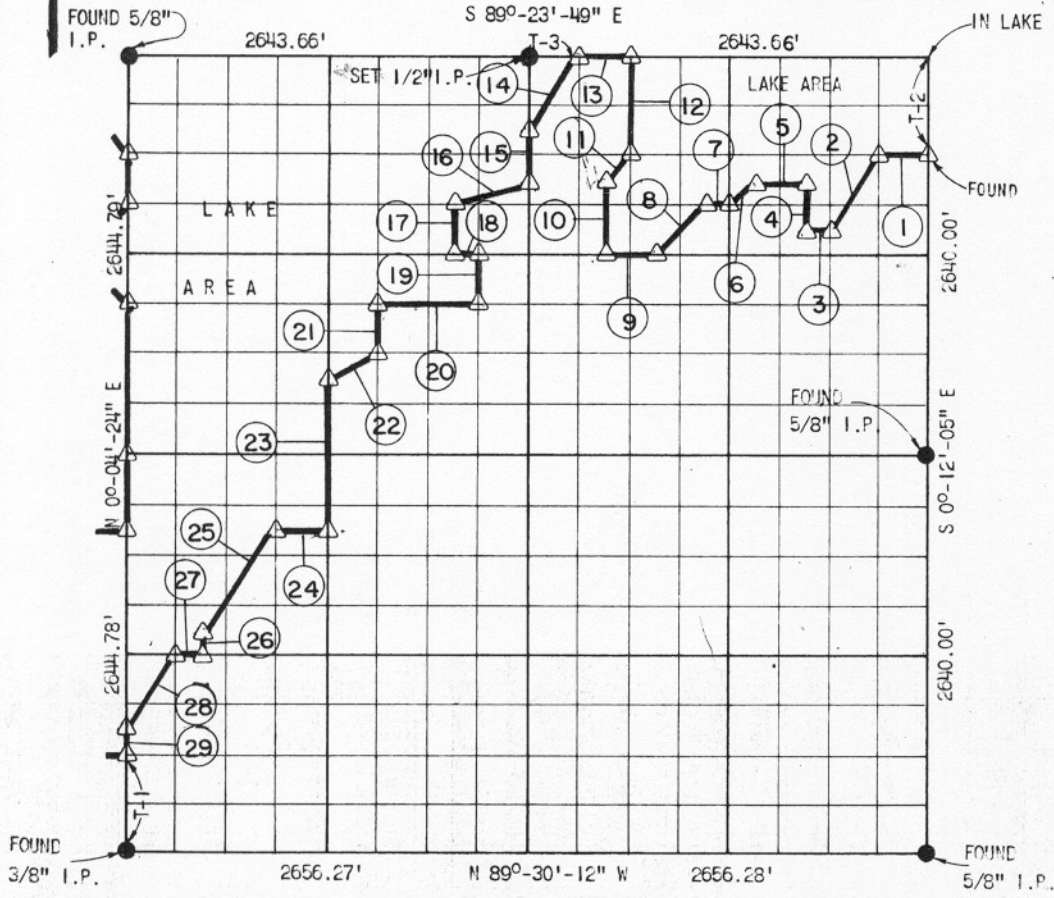
N

END
 NUMENT SET
 ORIGINAL CORNER FOUND
 IRON PIN

**PARTIAL BOUNDARY SURVEYS
 EUFAULA LAKE, AREA "K"
 CANADIAN RIVER, OKLAHOMA.**

Performed Under Contract Number DACW 56-72-C-0017

SEC 8 T 10 N R 18 E COUNTY M^cINTOSH



Course No.	Distance	Bearing	Course No.	Distance	Bearing
①	330.65'	S 89°-24'-37" E	⑪	232.27'	S 45°-16'-10" W
②	591.72'	N 33°-48'-07" E	⑫	660.44'	S 0°-05'-54" E
③	165.40'	S 89°-25'-13" E	⑬	330.45'	S 89°-23'-49" E
④	330.09'	S 0°-09'-30" E	⑭	592.33'	N 32°-50'-37" E
⑤	330.70'	S 89°-24'-49" E	⑮	330.29'	N 0°-03'-50" W
⑥	232.17'	N 45°-16'-32" E	⑯	521.12'	N 72°-06'-29" E
⑦	165.37'	S 89°-25'-01" E	⑰	330.35'	N 0°-02'-17" W
⑧	491.54'	N 45°-17'-10" E	⑱	165.42"	N 89°-25'-25" W
⑨	330.85'	S 89°-25'-25" E	⑲	330.33'	N 0°-02'-48" W
⑩	495.36'	S 0°-05'-23" E	⑳	661.90'	S 89°-25'-49" E

CERTIFICATE OF SURVEY Field Book No. E-1171 Date DEC. 1971 CONT'D ON SHEET 8

I HEREBY CERTIFY THAT THE ABOVE PLAT IS A TRUE AND CORRECT REPRESENTATION OF THE SURVEY MADE IN SECTION 8 T-10-N, R-18-E M^cINTOSH COUNTY OKLAHOMA

W. W. Wheeler
 REGISTERED LAND SURVEYOR

WHEELER & ASSOCIATES, ENGINEERS-SURVEYORS
 Under the Supervision of
U.S. ARMY ENGINEER DISTRICT, TULSA
CORPS OF ENGINEERS
 SHEET 7 OF 8



189