

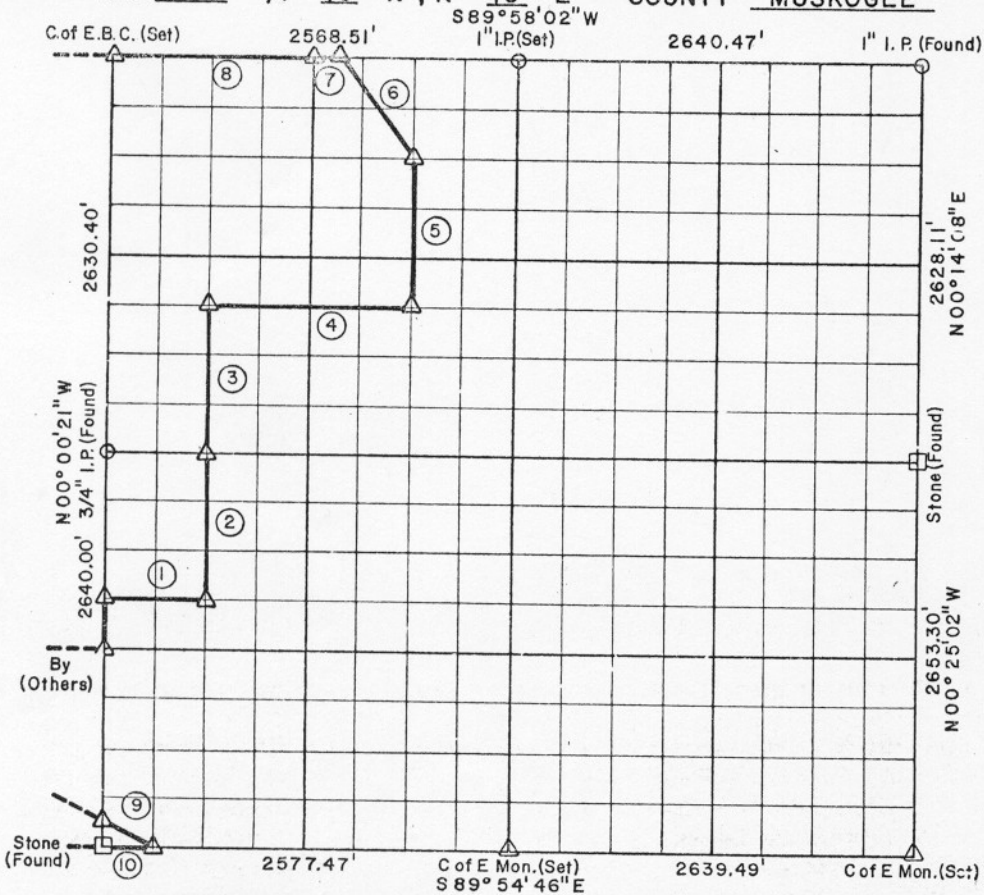
614733

950 APR 6 1970
 517
 Lucille Smith

PARTIAL BOUNDARY SURVEYS
 EUFAULA LAKE
 CANADIAN RIVER, OKLAHOMA

Performed Under Contract Number DACW 56-77-C-0269

SEC. 7, T-10-N, R-19-E, COUNTY MUSKOGEE



Course No.	Distance	Bearing	Course No.	Distance	Bearing
1	627.38'	N 89° 59' 47" E			
2	990.60'	N 00° 03' 26" W			
3	986.30'	N 00° 03' 26" W			
4	1285.65'	N 89° 57' 05" E			
5	986.08'	N 00° 06' 21" W			
6	823.47'	N 37° 03' 48" W			
7	165.03'	S 89° 58' 02" W			
8	1248.28'	S 89° 58' 02" W			
9	355.33'	S 62° 14' 39" E			
10	314.43'	N 89° 54' 46" W			

CERTIFICATE OF SURVEY

Field Book No. E-1364 Date MARCH, 1970

I HEREBY CERTIFY THAT THE ABOVE PLAT IS A TRUE AND CORRECT REPRESENTATION OF THE SURVEY MADE IN SECTION 7, T. 10. N., R. 19. E., MUSKOGEE COUNTY, OKLAHOMA.

EUGENE J. BUTLER
 L.S. 216
 BUTLER ASSOCIATES, INC.
 Under the Supervision of
 U.S. ARMY ENGINEER DISTRICT, TULSA
 CORPS OF ENGINEERS

- LEGEND
- ▲ MONUMENT
 - ORIGINAL CORNER
 - IRON PIN
 - * COMPUTED DISTANCE

Lucille Smith
 REGISTERED LAND SURVEYOR

SHEET 1 of 2

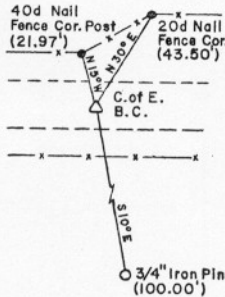
EUFAULA LAKE
CANADIAN RIVER, OKLAHOMA

SECTION AND QUARTER SECTION CORNER
REFERENCES FOR

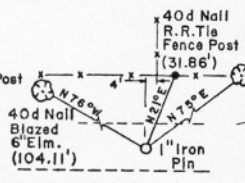
SEC.-7, TION, R 19E MUSKOGEE COUNTY

Survey Party met with
as filed for Record in Book
950 N.P.R. 61278
of Records in Book 950
for King Co.
Dwight Smith

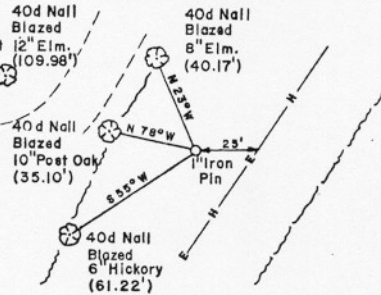
N.W. CORNER



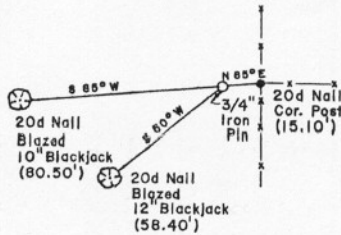
NORTH 1/4 CORNER



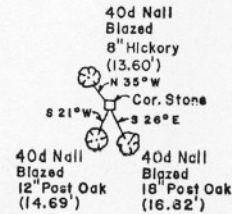
N.E. CORNER



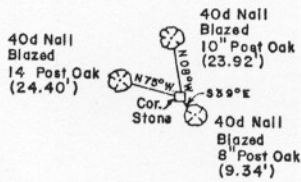
WEST 1/4 CORNER



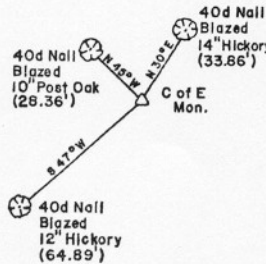
EAST 1/4 CORNER



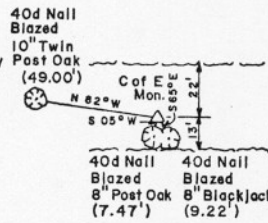
S.W. CORNER



SOUTH 1/4 CORNER



S.E. CORNER



BUTLER ASSOCIATES, INC.

Scale: 1" = 50'
Date: March, 1978
Field Book No. E-1364



Eugene C. January
Registered Land Surveyor

- LEGEND
- △ Monument
 - Original Corner
 - Iron Pin