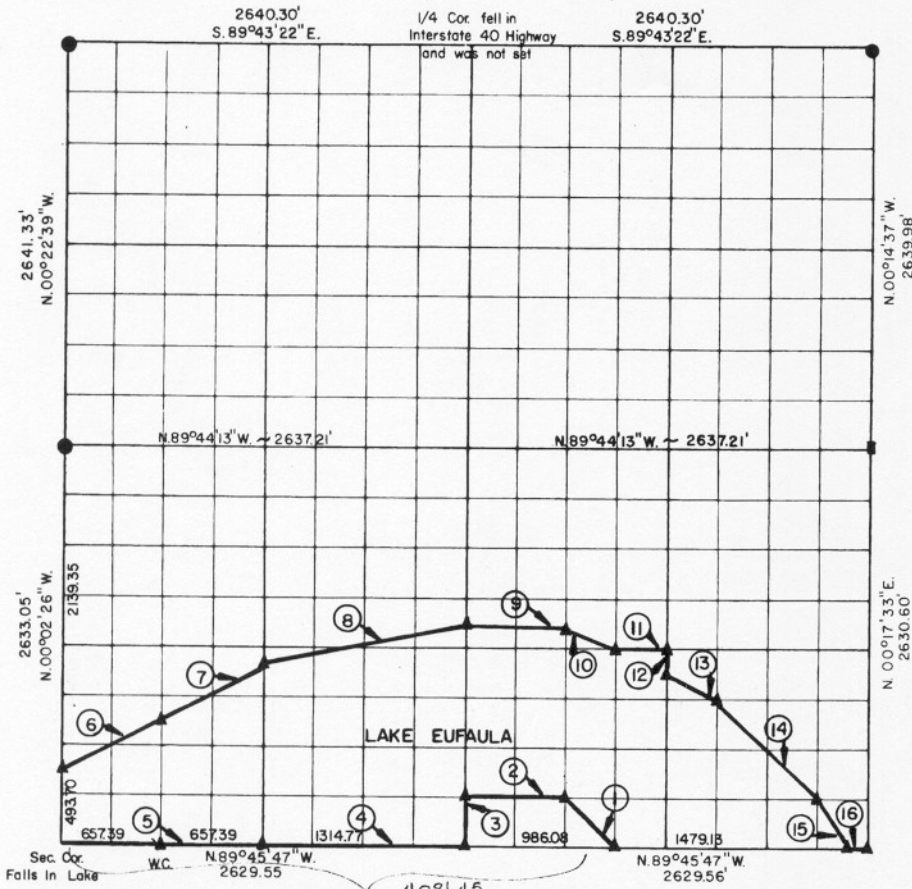


PARTIAL BOUNDARY SURVEYS  
EUFALA LAKE  
OKLAHOMA

Performed Under Contract Number DACW 56-76-C-0067

SEC. 15, T. 11 N., R. 14 E., COUNTY McINTOSH



Course No.	Distance	Bearing	Course No.	Distance	Bearing
1	465.30'	N.44°46'35\"W.	14	930.20'	S.44°45'33\"E.
2	657.63'	N.89°45'35\"W.	15	367.54'	S.26°17'20\"E.
3	328.98'	S.00°07'34\"W.	16	164.35'	S.89°45'47\"E.
4	1314.77'	N.89°45'47\"W.			
5	1314.78'	N.89°45'47\"W.			
6	734.44'	N.63°37'28\"E.			
7	734.44'	N.63°37'28\"E.			
8	1356.25'	N.76°12'37\"E.			
9	658.46'	S.89°44'54\"E.			
10	368.18'	S.63°13'04\"E.			
11	329.17'	S.89°45'00\"E.			
12	164.45'	S.00°12'33\"W.			
13	367.96'	S.63°12'23\"E.			

CERTIFICATE OF SURVEY  
I hereby certify that the above plat is a true and correct representation of the survey made in Section 15, T. 11 N., R. 14 E., COUNTY, OKLAHOMA.  
*Shank, P. Price*  
Registered Professional Engineer  
Registered Land Surveyor

Field Book No. E 1243 Date APRIL 1976

MAPCO ENGINEERING CORPORATION  
Under the Supervision Of  
U.S. ARMY ENGINEER DISTRICT, TULSA  
CORPS OF ENGINEERS  
SHEET 1 of 2

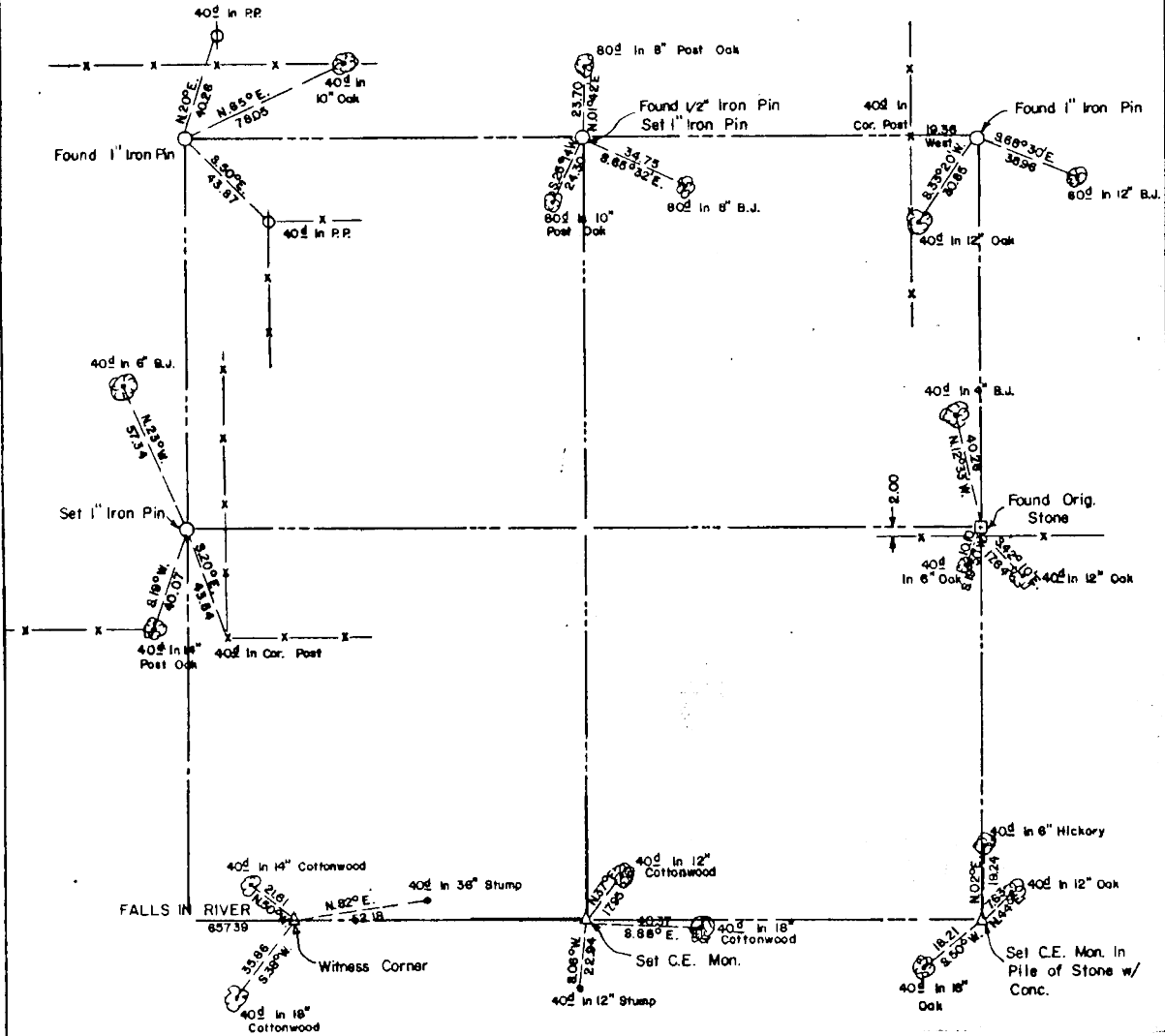
LEGEND  
▲ MONUMENT  
□ ORIGINAL CORNER  
○ IRON PIN

# EUFAULA LAKE OKLAHOMA

SECTION AND QUARTER SECTION CORNER  
REFERENCES FOR

SEC. 15, T 11 N, R 14E

COUNTY- MCINTOSH



Scale: 1" = 50'  
Date: APRIL 1976  
Field book No. E 1243

**LEGEND**

- △ - Monument
- - Original Corner
- - Iron pin