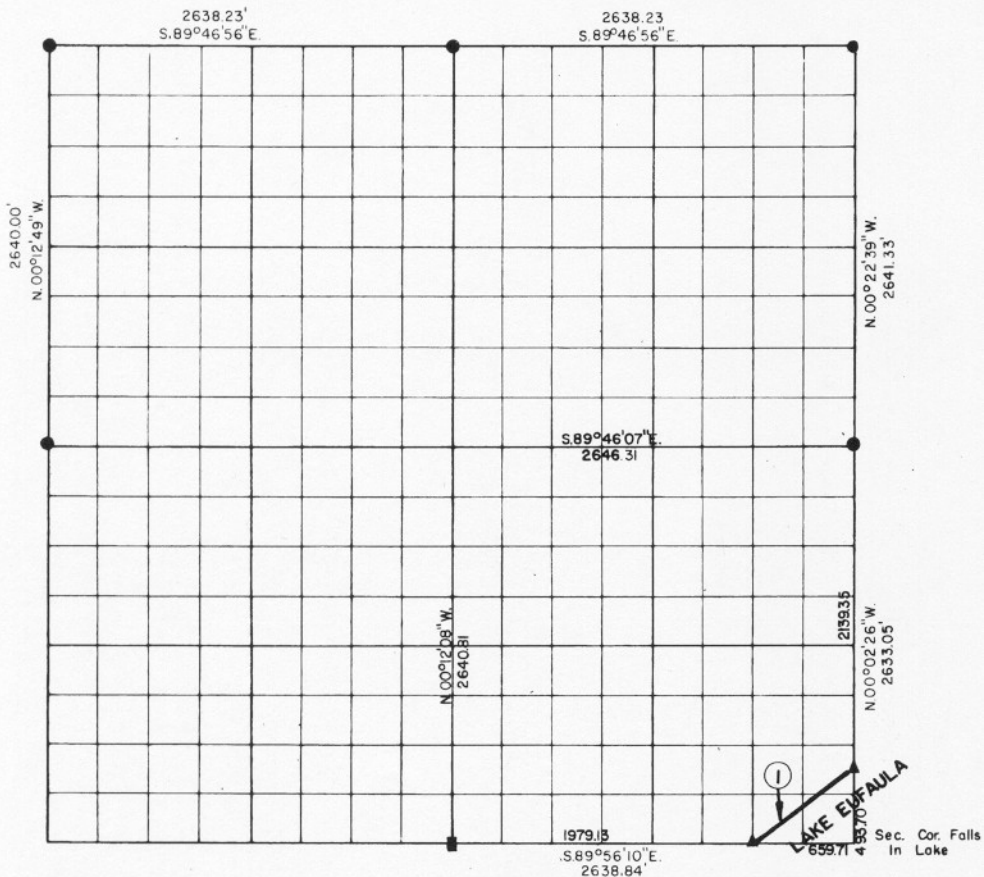


PARTIAL BOUNDARY SURVEYS EUFAULA LAKE OKLAHOMA

Performed Under Contract Number DACW 56-76-C-0067

SEC. 16, T. 11 N., R. 14 E., COUNTY McINTOSH



Course No.	Distance	Bearing	Course No.	Distance	Bearing
1	823.27'	N.53°13'01\"E.			

CERTIFICATE OF SURVEY
I hereby certify that the above plat is a true and correct representation of the survey made in Section 16, T. 11 N., R. 14 E., COUNTY, OKLAHOMA.
Frank J. Linn
Registered Professional Engineer
Registered Land Surveyor

Field Book No. E 1244 Date APRIL 1976
MAPCO ENGINEERING CORPORATION
Under the Supervision of
U.S. ARMY ENGINEER DISTRICT, TULSA
CORPS OF ENGINEERS
SHEET 1 of 2

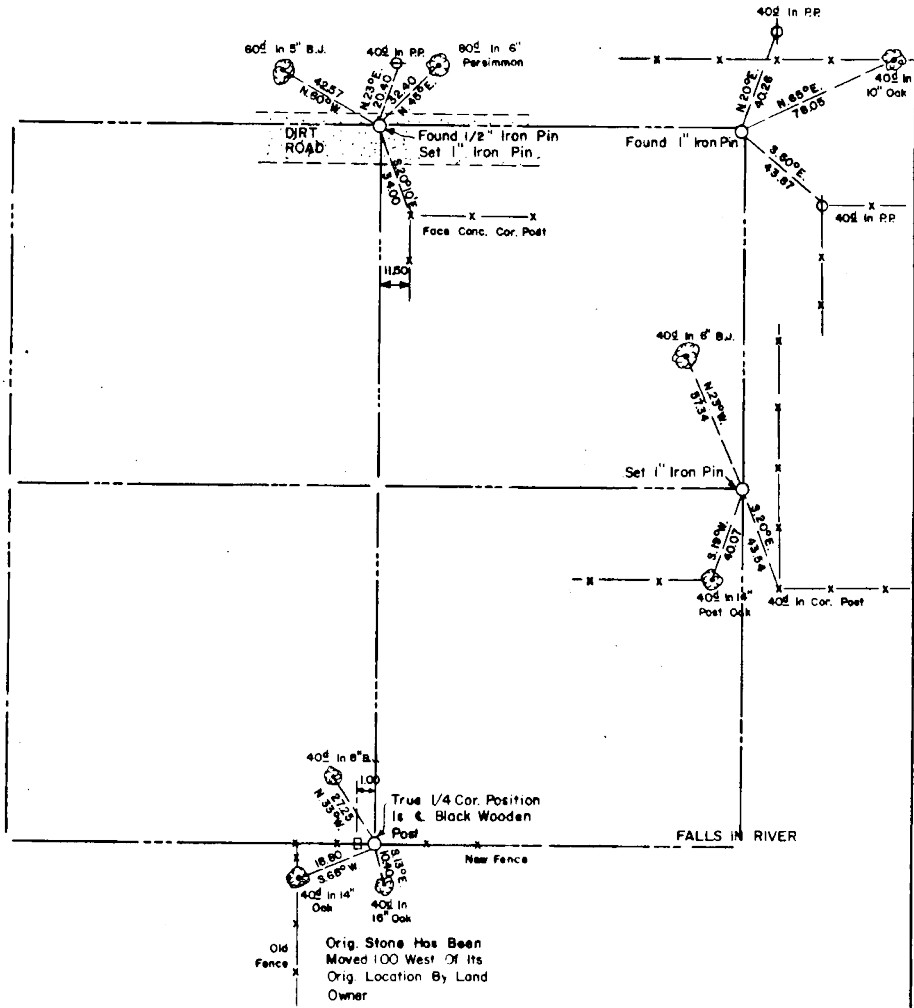
- LEGEND
 ▲ MONUMENT
 □ ORIGINAL CORNER
 ○ IRON PIN

EUFAULA LAKE OKLAHOMA

SECTION AND QUARTER SECTION CORNER
REFERENCES FOR

SEC. 16 , T 11 N, R14E

COUNTY- McINTOSH



Scale: 1" = 50'
Date: APRIL 1976
Field book No. E 1244

- LEGEND**
- Δ - Monument
 - - Original Corner
 - - Iron pin