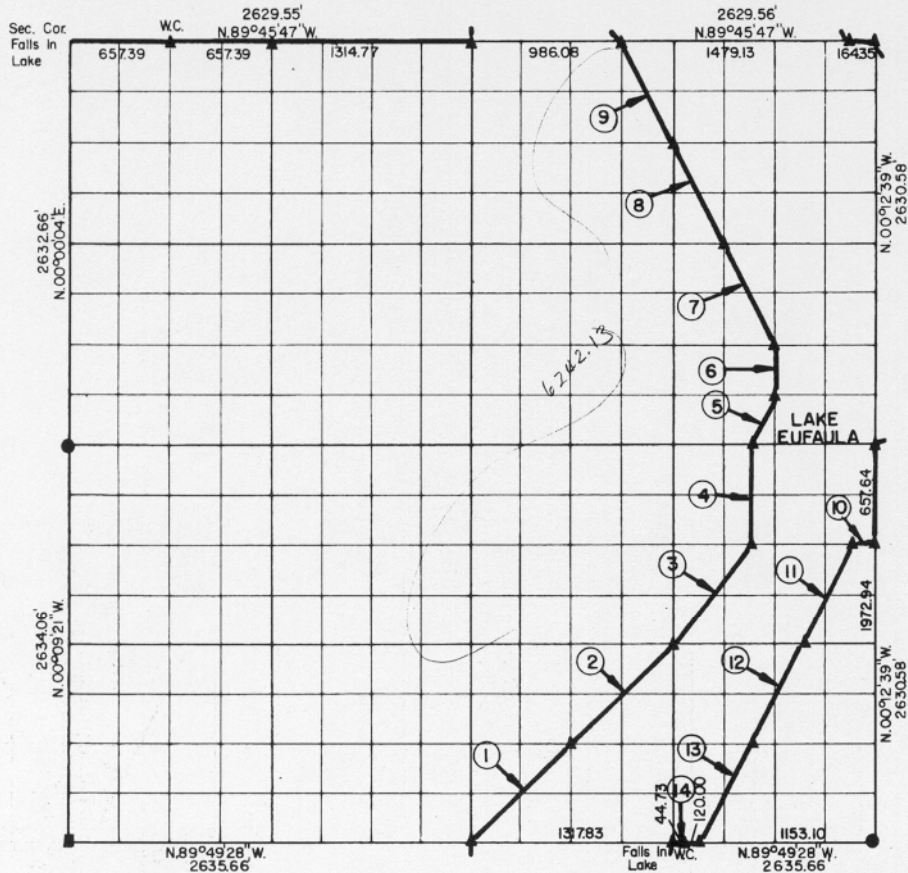


**PARTIAL BOUNDARY SURVEYS
EUFAULA LAKE
OKLAHOMA**

Performed Under Contract Number DACW 56-76-C-0067

SEC. 22, T. 11 N., R. 14 E., COUNTY McINTOSH



Course No.	Distance	Bearing	Course No.	Distance	Bearing
1	928.23'	N.45°02'43"E.	14	164.73'	N.89°49'28"W.
2	928.23'	N.45°02'43"E.			
3	819.92'	N.36°51'00"E.			
4	657.78'	N.00°11'23"W.			
5	366.67'	N.26°28'04"E.			
6	328.86'	N.00°11'39"W.			
7	737.48'	N.26°39'41"W.			
8	737.48'	N.26°39'41"W.			
9	737.48'	N.26°39'41"W.			
10	164.59'	N.89°47'45"W.			
11	733.61'	S.26°28'42"W.			
12	733.61'	S.26°28'42"W.			
13	733.61'	S.26°28'42"W.			

Field Book No. E1245 Date APRIL 1976

CERTIFICATE OF SURVEY

I hereby Certify That The Above Plat is a True and Correct Representation of The Survey Made in Section 22 T. 11 N., R. 14 E., COUNTY, OKLAHOMA

Frank P. Price
Registered Professional Engineer
Registered Land Surveyor

MAPCO ENGINEERING CORPORATION

Under The Supervision Of

**U.S. ARMY ENGINEER DISTRICT, TULSA
CORPS OF ENGINEERS**

SHEET 1 of 2

LEGEND

- ▲ MONUMENT
- ORIGINAL CORNER
- IRON PIN

