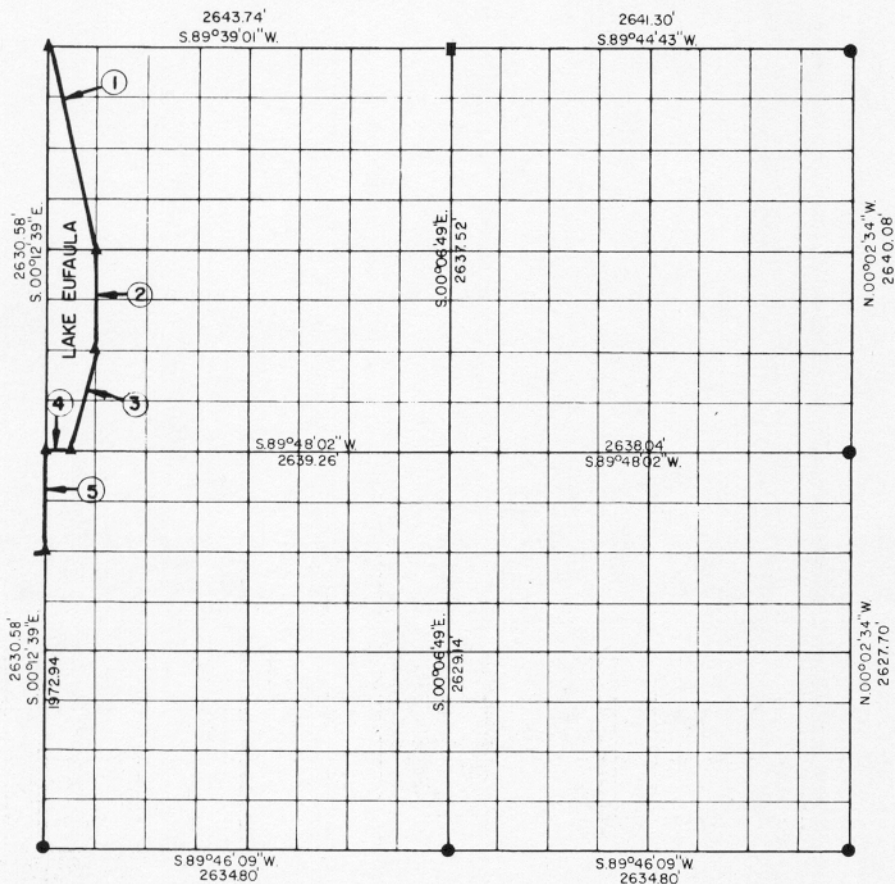


**PARTIAL BOUNDARY SURVEYS
EUFAULA LAKE
OKLAHOMA**

Performed Under Contract Number DACW 56-76-C-0067

SEC. 23, T. 11 N., R. 14 E., COUNTY McINTOSH



Course No.	Distance	Bearing	Course No.	Distance	Bearing
1	1355.75'	S.14°18'24\"E.			
2	657.86'	S.00°11'55\"E.			
3	678.23'	S.13°52'39\"W.			
4	164.95'	S.89°48'02\"W.			
5	657.64'	S.00°12'39\"E.			

CERTIFICATE OF SURVEY
I Herby Certify That The
Above Plat is a True and
Correct Representation of
The Survey Made in Section
23 T. 11 N., R. 14 E.,
COUNTY, OKLAHOMA

Field Book No. E 1246 Date APRIL 1976

MAPCO ENGINEERING CORPORATION
Under The Supervision Of
U.S. ARMY ENGINEER DISTRICT, TULSA
CORPS OF ENGINEERS

LEGEND
▲ MONUMENT
□ ORIGINAL CORNER
○ IRON PIN

Registered Professional Engineer
Registered Land Surveyor

SHEET 1 of 2

