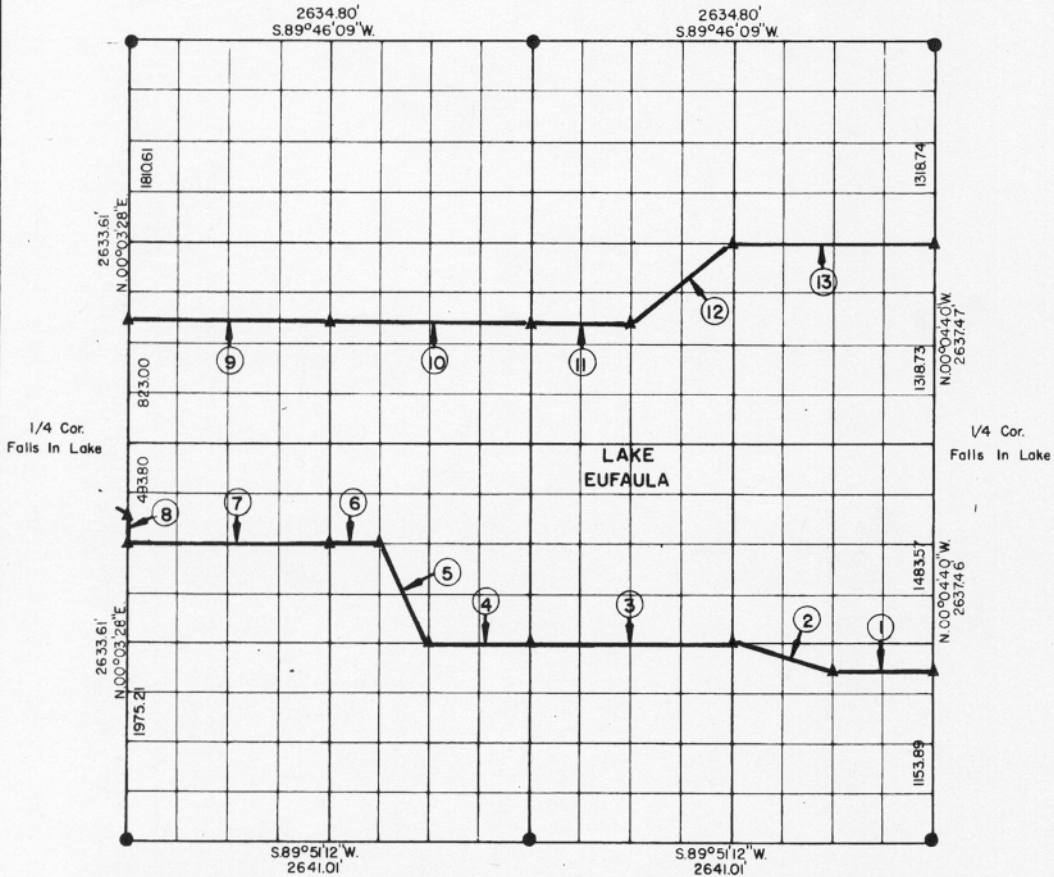


**PARTIAL BOUNDARY SURVEYS  
EUFAULA LAKE  
OKLAHOMA**

Performed Under Contract Number DACW 56-76-C-0067

SEC. 26, T. 11 N., R. 14 E., COUNTY McINTOSH



Course No.	Distance	Bearing	Course No.	Distance	Bearing
1	659.91'	S.89°50'06\"W.			
2	679.84'	N.76°08'16\"W.			
3	1319.73'	S.89°49'56\"W.			
4	659.86'	S.89°49'56\"W.			
5	735.77'	N.26°37'37\"W.			
6	329.84'	S.89°49'18\"W.			
7	1319.34'	S.89°49'18\"W.			
8	164.60'	N.00°03'28\"E.			
9	1318.47'	N.89°47'53\"E.			
10	1318.47'	N.89°47'53\"E.			
11	659.23'	N.89°47'53\"E.			
12	825.08'	N.52°59'23\"E.			
13	1318.18'	N.89°47'25\"E.			

Field Book No. E 1249 Date APRIL 1976

**CERTIFICATE OF SURVEY**

I Hereby Certify That The Above Plat is a True and Correct Representation of The Survey Made in Section 26 T. 11 N. R. 14 E. COUNTY, OKLAHOMA

*Frank P. Peave*  
Registered Professional Engineer  
Registered Land Surveyor

**MAPCO ENGINEERING CORPORATION**

Under The Supervision Of

**U.S. ARMY ENGINEER DISTRICT, TULSA  
CORPS OF ENGINEERS**

SHEET 1 of 2

**LEGEND**

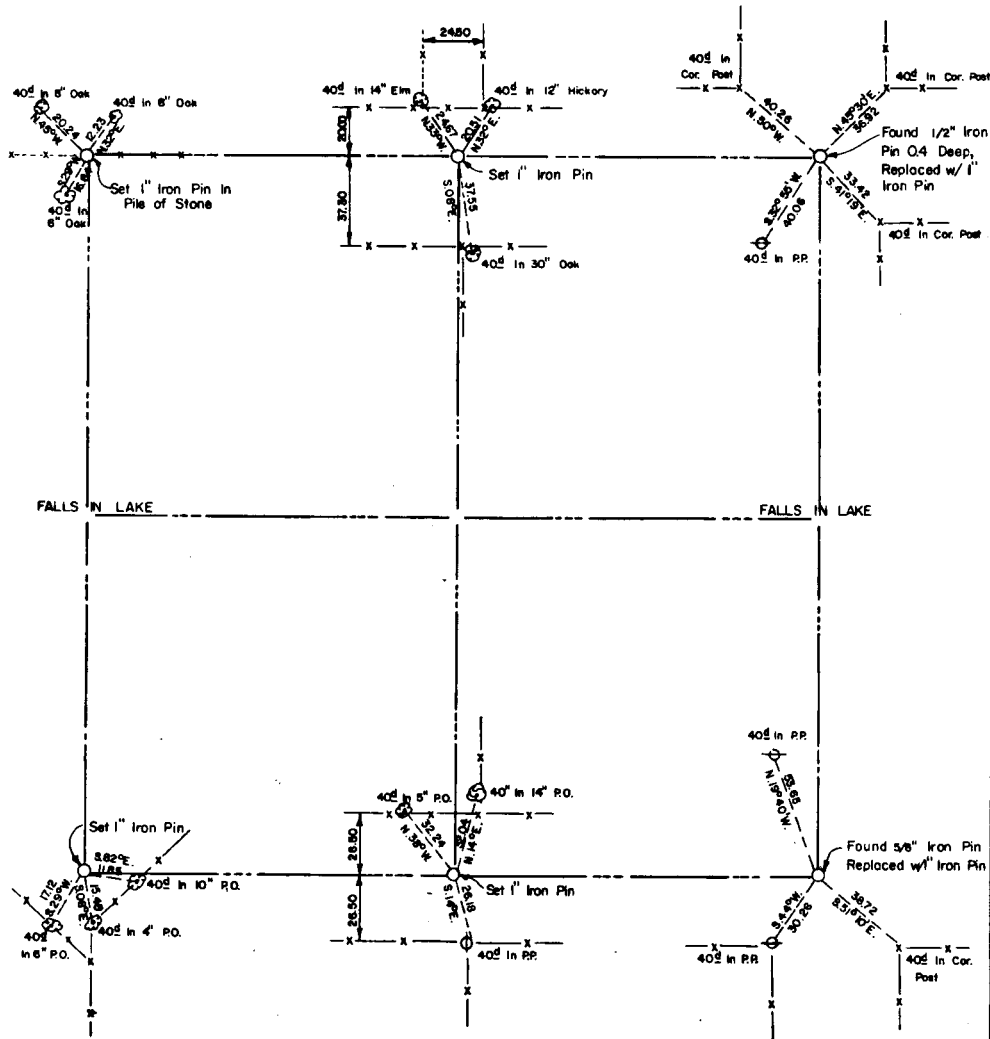
- ▲ MONUMENT
- ORIGINAL CORNER
- IRON PIN

# EUFAULA LAKE OKLAHOMA

SECTION AND QUARTER SECTION CORNER  
REFERENCES FOR

SEC. 26, T 11 N, R 14 E

COUNTY- MCINTOSH



Scale: 1" = 50'  
Date: APRIL 1976  
Field book No. E 1249

**LEGEND**

- △ - Monument
- - Original Corner
- - Iron pin