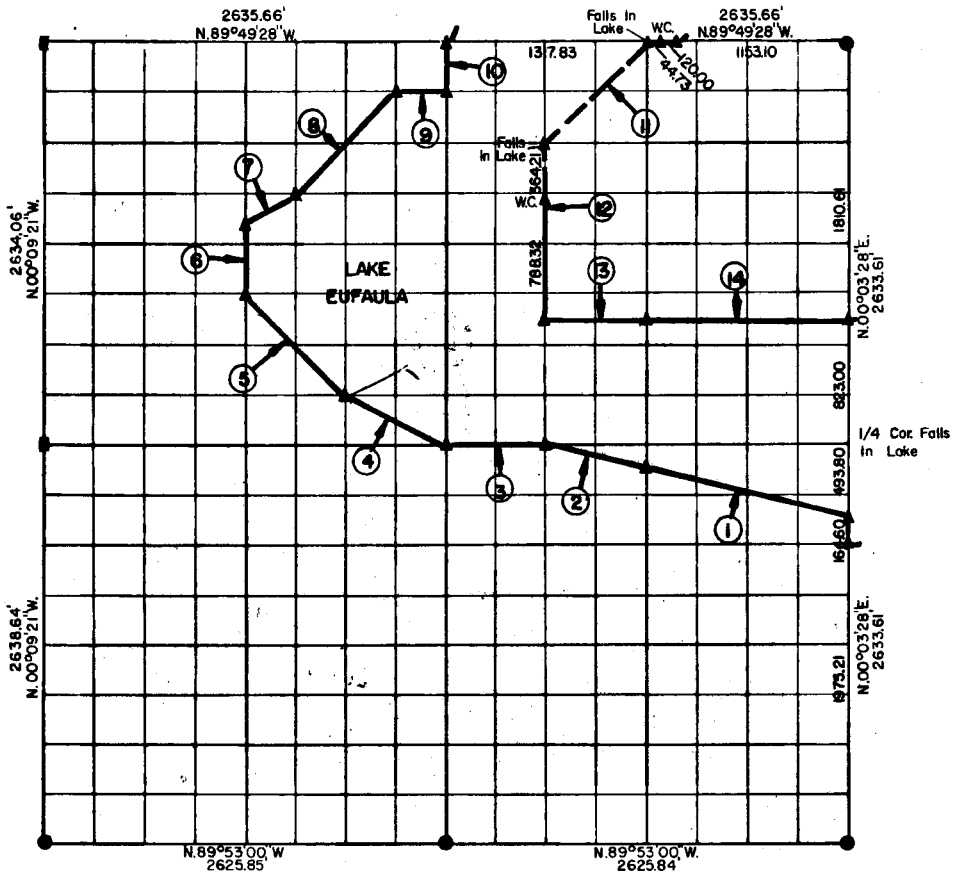


PARTIAL BOUNDARY SURVEYS  
EUFULA LAKE  
OKLAHOMA

Performed Under Contract Number DACW 56-76-C-0067

SEC. 27, T. 11 N., R. 14 E., COUNTY McINTOSH



Course No.	Distance	Bearing	Course No.	Distance	Bearing
1	1356.58'	N.75°47'05\"W.	14	1316.14'	S.89°49'39\"E.
2	678.29'	N.75°47'05\"W.			
3	657.69'	N.89°49'44\"W.			
4	736.76'	N.63°17'11\"W.			
5	933.01'	N.44°56'15\"W.			
6	493.87'	N.00°06'09\"W.			
7	367.38'	N.63°33'10\"E.			
8	929.28'	N.45°03'19\"E.			
9	329.38'	S.89°49'30\"E.			
10	329.23'	N.00°02'57\"W.			
11	929.89'	S.45°05'47\"W.			
12	1152.28'	S.00°01'21\"E.			
13	658.07'	S.89°49'39\"E.			

CERTIFICATE OF SURVEY

I hereby Certify That The Above Plat is a True and Correct Representation of The Survey Made in Section 27 T. 11 N., R. 14 E., COUNTY, OKLAHOMA

*Frank P. Russell*  
Registered Professional Engineer  
Registered Land Surveyor

Field Book No. E 1250 Date APRIL 1976

MAPCO ENGINEERING CORPORATION  
Under The Supervision Of  
U.S. ARMY ENGINEER DISTRICT, TULSA  
CORPS OF ENGINEERS  
SHEET 1 of 2

LEGEND

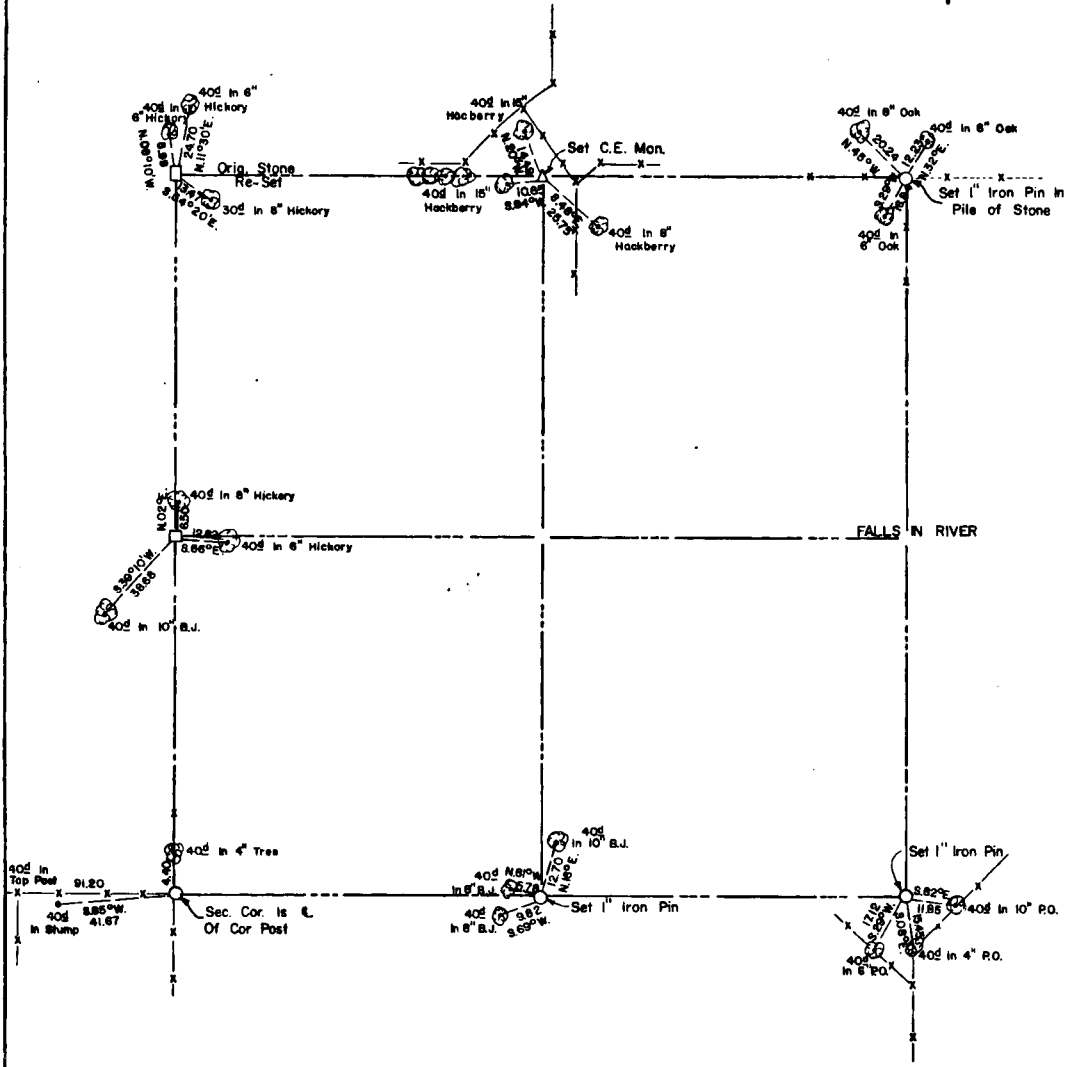
- ▲ MONUMENT
- ORIGINAL CORNER
- IRON PIN

# EUFAULA LAKE OKLAHOMA

SECTION AND QUARTER SECTION CORNER  
REFERENCES FOR

SEC. 27, T 11 N, R 14 E

COUNTY- MCINTOSH



Scale: 1" = 50'  
Date: APRIL 1976  
Field book No. E 1250

- LEGEND**
- △ - Monument
  - - Original Corner
  - - Iron pin