

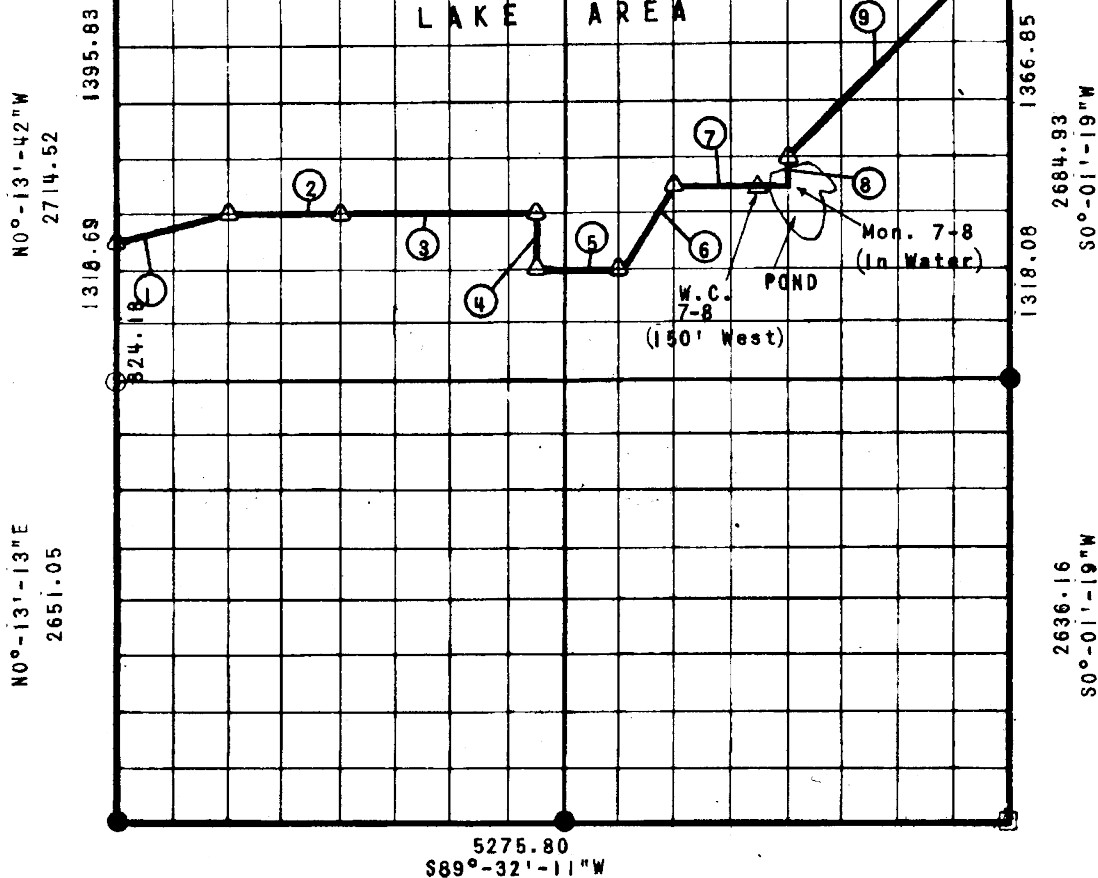
PARTIAL BOUNDARY SURVEYS  
 EUFAULA RESERVOIR, CANADIAN RIVER, OKLAHOMA  
 SEC. 2, T-11-N, R-14-E, MCINTOSH COUNTY, OKLAHOMA

Sec. Cor.  
in Water

$S89^{\circ}-58'-52''E$

N.  $\frac{1}{4}$  Cor.  
in Water

5277.30



COURSE NO.	DISTANCE	BEARING	COURSE NO.	DISTANCE	BEARING
1	673.60	N75°-31'-57"E			
2	659.63	N89°-41'-49"E			
3	1154.31	N89°-41'-49"E			
4	329.60	S00°-00'-05"W			
5	494.69	N89°-41'-42"E			
6	595.75	N33°-36'-59"E			
7	659.61	N89°-41'-52"E			
8	164.78	N00°-00'-24"E			
9	1904.82	N43°-50'-42"E			

Field Book No. E-1228

Date 15 Aug 1971

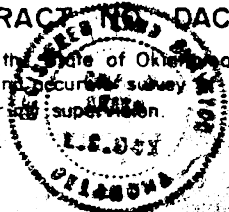
BY GROSSMAN & KEITH ENGINEERING CO.

FOR

DEPARTMENT OF THE ARMY, CORPS OF ENGINEERS, TULSA DISTRICT  
 UNDER CONTRACT NO. DACW 56-75-C-0132

I, Guy N. Keith, a Registered Land Surveyor in the State of Oklahoma, do hereby certify that the above plot is a true and accurate survey of Section 2, T-11-N, R-14-E as made under my supervision.

*Guy N. Keith*  
 Reg. No. 541 (Oklahoma)



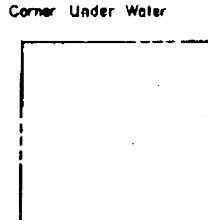
LEGEND

- △ Std. C. of E. Conc. Monument
- Iron Pin Found
- Iron Pins Set
- Stones Found

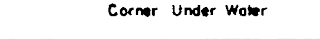
AREA "B" EUFAULA LAKE  
 CANADIAN RIVER, OKLAHOMA  
 SECTION AND QUARTER SECTION CORNER  
 REFERENCES FOR  
 SECTION 2, T-11-N, R-14-E  
 MCINTOSH COUNTY, OKLAHOMA

FIELD BOOK NO.  
 E - 1228

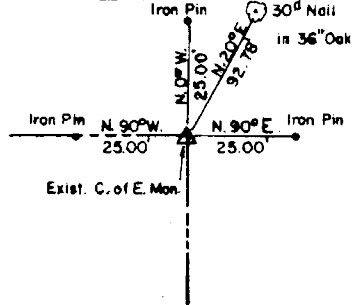
N. W. CORNER



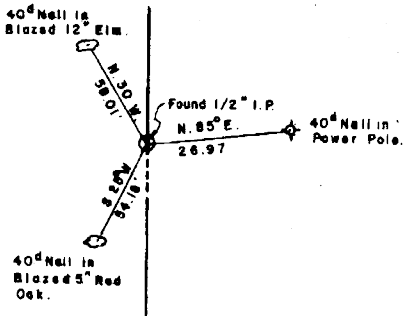
NORTH 1/4 CORNER



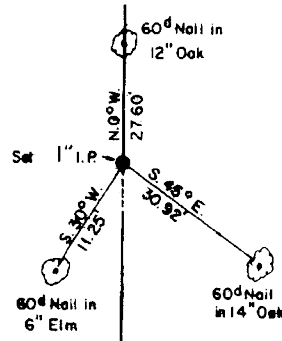
N. E. CORNER



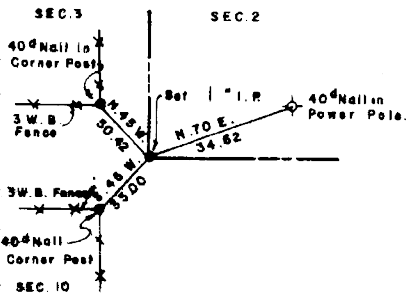
WEST 1/4 CORNER



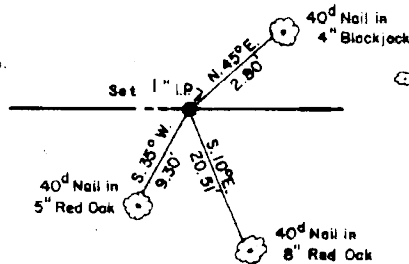
EAST 1/4 CORNER



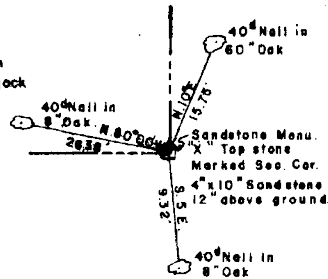
S. W. CORNER



SOUTH 1/4 CORNER



S. E. CORNER



LEGEND

- △ Monument C. of E.
- Iron Pins Found
- Iron Pin Set
- Stones Found

Date : August 15, 1975