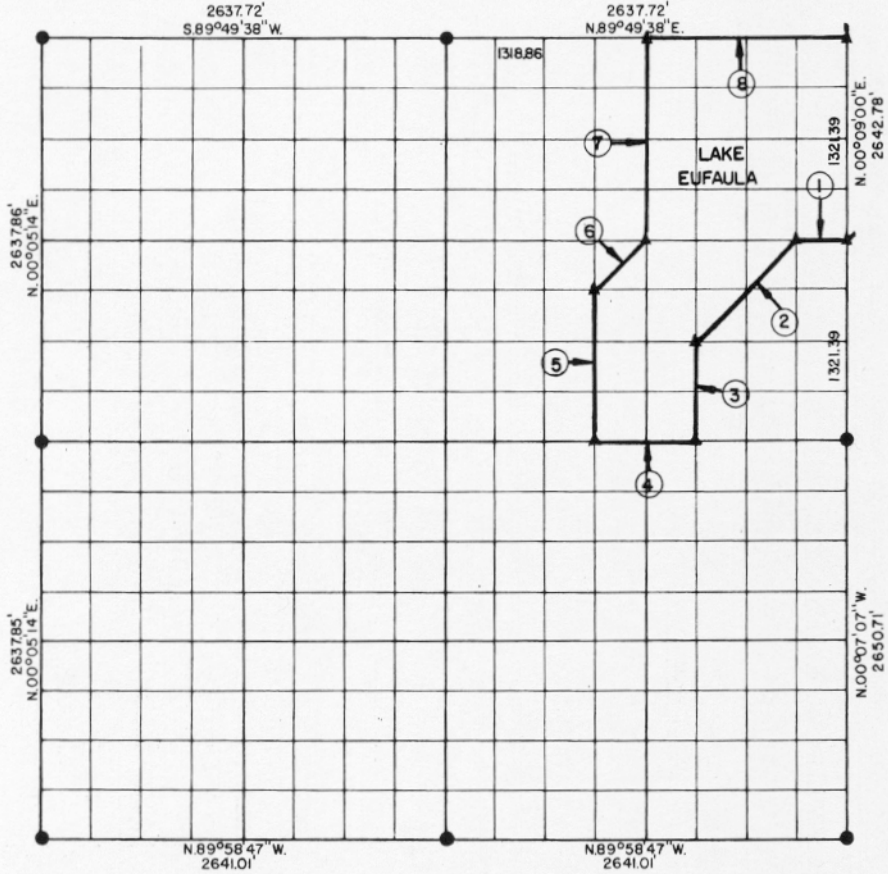


**PARTIAL BOUNDARY SURVEYS  
EUFAULA LAKE  
OKLAHOMA**

Performed Under Contract Number DACW 56-76-C-0067

SEC. 36 , T. 11 N., R. 14 E., COUNTY McINTOSH



Course No.	Distance	Bearing	Course No.	Distance	Bearing
1	329.43'	S.89°51'14\"W.			
2	935.01'	S.44°54'51\"W.			
3	660.46'	S.00°06'46\"W.			
4	658.29'	S.89°52'50\"W.			
5	990.46'	N.00°05'18\"E.			
6	467.35'	N.44°54'30\"E.			
7	1320.78'	N.00°06'02\"E.			
8	1318.86'	N.89°49'38\"E.			

Field Book No. E 1251 Date APRIL 1976

**CERTIFICATE OF SURVEY**

I Herby Certify That The Above Plot is a True and Correct Representation of The Survey Made in Section 36, T. 11 N., R. 14 E., COUNTY, OKLAHOMA

*Frank P. Riva*  
Registered Professional Engineer  
Registered Land Surveyor

**MAPCO ENGINEERING CORPORATION**

Under The Supervision Of

U.S. ARMY ENGINEER DISTRICT, TULSA  
CORPS OF ENGINEERS

SHEET 1 of 2

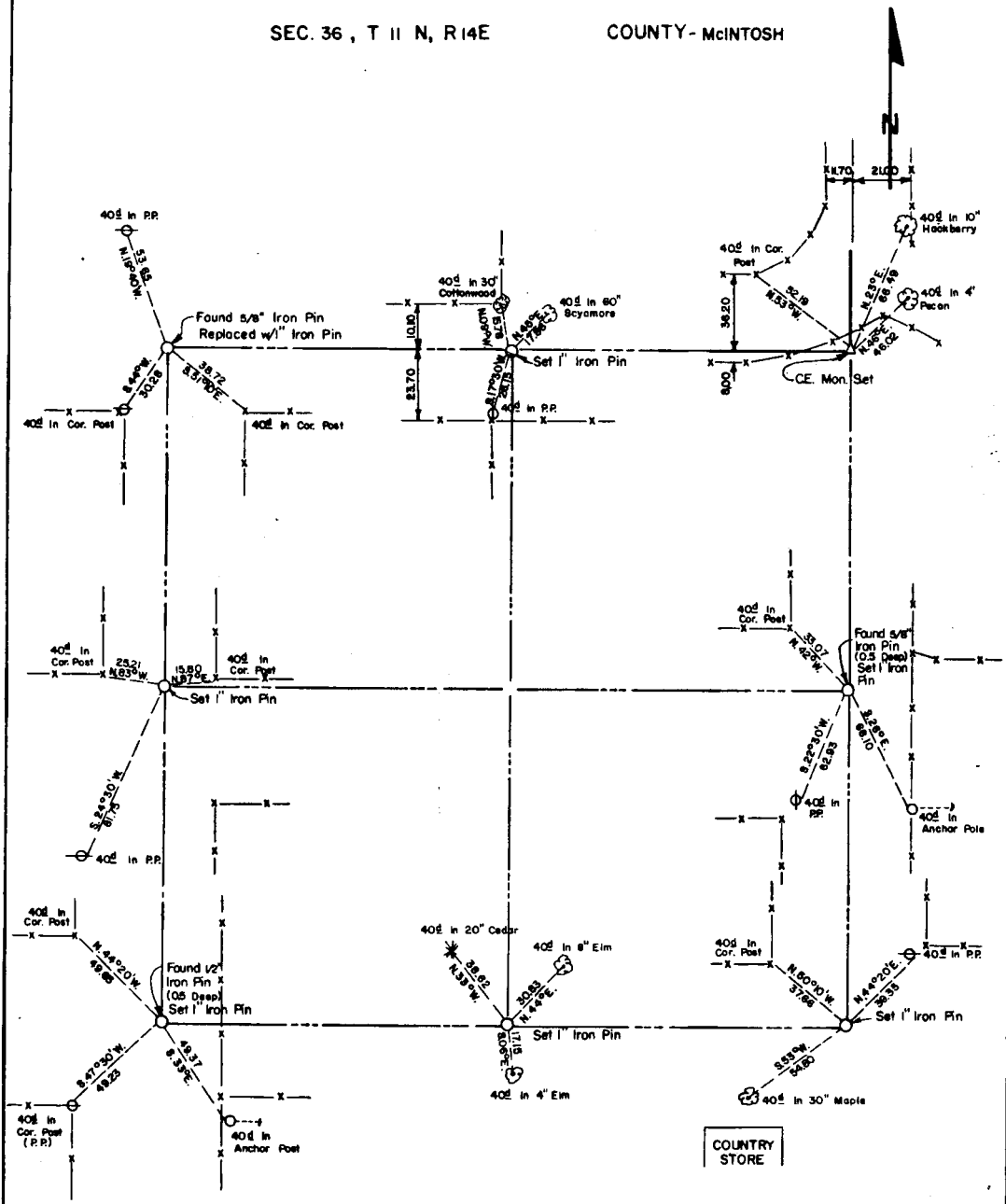
**LEGEND**

- ▲ MONUMENT
- ORIGINAL CORNER
- IRON PIN

# EUFAULA LAKE OKLAHOMA

SECTION AND QUARTER SECTION CORNER  
REFERENCES FOR

SEC. 36, T 11 N, R 14E      COUNTY - MCINTOSH



COUNTRY STORE

Scale: 1" = 50'  
Date: APRIL 1976  
Field book No. E 1251

**LEGEND**  
 Δ - Monument  
 □ - Original Corner  
 ○ - Iron pin