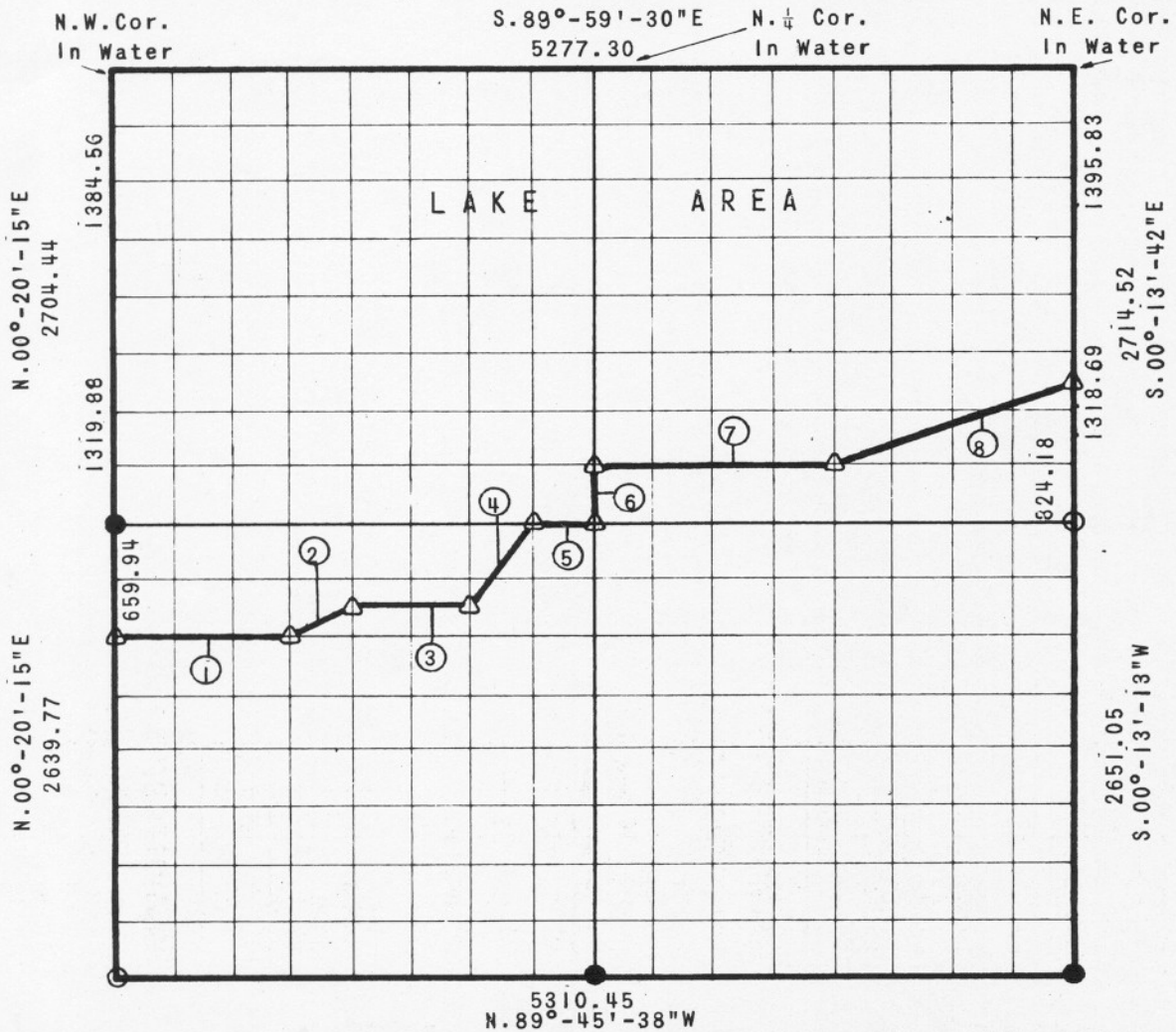


PARTIAL BOUNDARY SURVEYS
 EUFAULA RESERVOIR, CANADIAN RIVER, C. OKLAHOMA
 SEC. 3, T-11-N, R-14-E, MCINTOSH COUNTY, OKLAHOMA



COURSE NO	DISTANCE	BEARING	COURSE NO	DISTANCE	BEARING
1	993.41	S. 89°-51'-26" E			
2	370.31	N. 63°-39'-18" E			
3	662.14	S. 89°-51'-53" E			
4	596.47	N. 33°-53'-47" E			
5	330.88	S. 89°-53'-15" E			
6	329.82	N. 00°-09'-35" E			
7	1327.62	S. 89°-53'-04" E			
8	1413.86	N. 69°-38'-36" E			

Field Book No. E - 1229

Date 15 Aug. 1975

BY GROSSMAN & KEITH ENGINEERING CO.

FOR

DEPARTMENT OF THE ARMY, CORPS OF ENGINEERS, TULSA DISTRICT
 UNDER CONTRACT NO. DACW 56-75-C-0132

I, Guy N. Keith, a Registered Land Surveyor in the State of Oklahoma, do hereby certify that the above plot is a true and accurate survey of Section 3, T-11-N, R-14-E as made under my supervision.

Guy N. Keith
 Reg. No. 541 (Oklahoma)

LEGEND

- △ Std. C. of E. Conc. Monument
- Iron Pin Found
- Iron Pins Set
- Stones Found

AREA "B" EUFAULA LAKE
 CANADIAN RIVER, OKLAHOMA
 SECTION AND QUARTER SECTION CORNER
 REFERENCES FOR
 SECTION 3, T-11-N, R-14-E
 MCINTOSH COUNTY, OKLAHOMA

FIELD BOOK NO.
 E - 1229

N. W. CORNER

NORTH 1/4 CORNER

N.E. CORNER

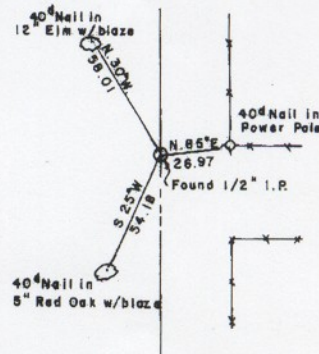
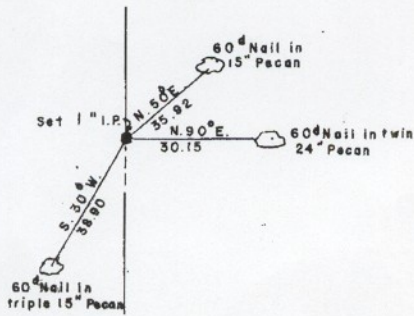
Corner Under Water

Corner Under Water

Corner Under Water

WEST 1/4 CORNER

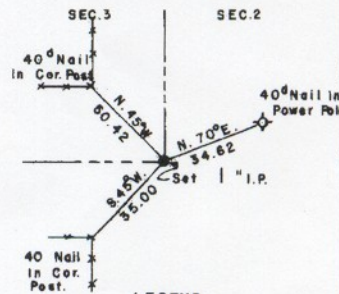
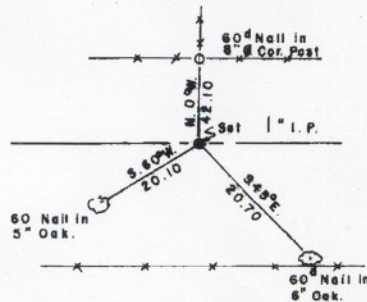
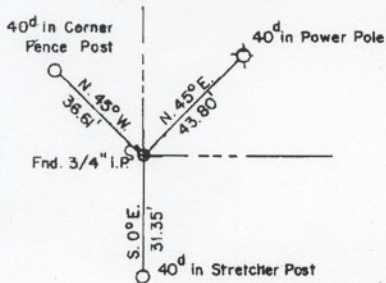
EAST 1/4 CORNER



S. W. CORNER

SOUTH 1/4 CORNER

S. E. CORNER



LEGEND

C. of E. Conc
 MONUMENT

○ Iron Pins Found

● IRON PIN Set

□ Stones Found

Date: August 15, 1975

~

K. W. CORNER NORTH - E. CORNER 1/4 CORNER

Corniw Under Water Corner Under Water Corner Uokdor Water

WIEST i/4 CORNER EAST i/4 CORNER

so 4mall
is I.S.C n

POWs, Palo 14.9 godii.ii In #win
24' Pocan
Feand 1 2 l.n

404"411 in
so S' Red Os k W/bift4 tripit 1.,

S. W. CORNER SOUTH i/4 CORNER S. E. CORNER

40d IFk Cornet d SIE EC.2 Fbnce Post 40 in Power Pole
G29sioll
4 l Qor.)Not 4""m

4OdN*il is set

limit In 51 Oak.

40 MaH 6d c

4 in Strelefr Post It A IF In **l.

fe'm@ii in

6, Oak. C- Of E. Conc

AMONUMENT

() Iron Pims Found Date: August 16, i975 0 IRON PI K Set
13 Stones Found

~

10/07 03 THU 08:19 FAX 9186694323

PISSO94323 TULSA DISTRICT EC-DD W005

FIELD BOOK NO. AREA I@811 EUFAULA LAXE E - 1229

CAW JAN R I VER, O(LAfnA SECTION AND QMRTER SECTION CORNER REFEREW,ES FOR SECTION 3, T-11-N. R-14-E MCINTOSH
COUNTY, A(LAHWA