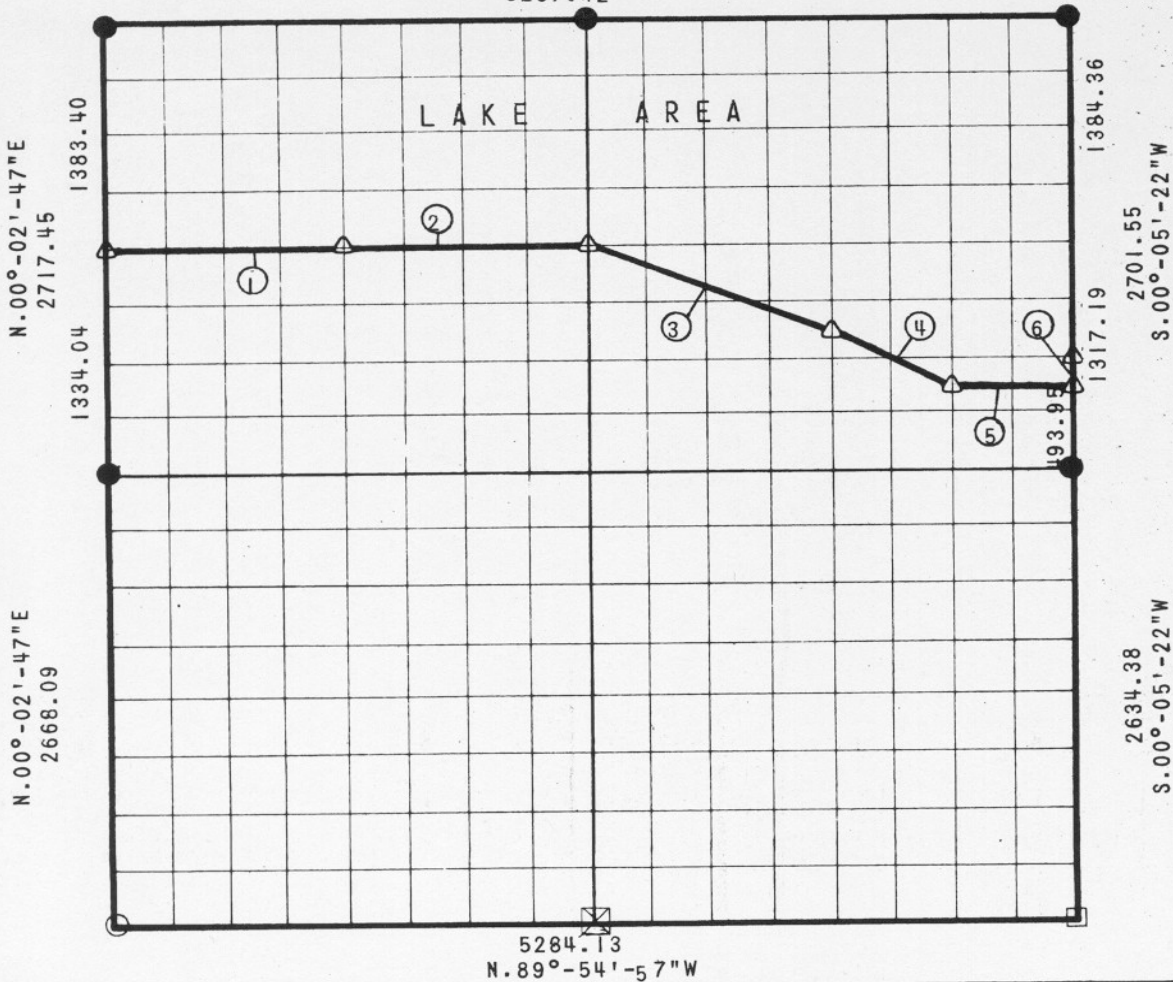


PARTIAL BOUNDARY SURVEYS
 EUFAULA RESERVOIR, CANADIAN RIVER, OKLAHOMA
 SEC. 5, T-11-N, R-14-E, MCINTOSH COUNTY, OKLAHOMA

S. 89°-22'-42"E
 5287.42



COURSE NO.	DISTANCE	BEARING	COURSE NO.	DISTANCE	BEARING
1	1321.66	S. 89°-22'-23"E			
2	1321.66	S. 89°-22'-23"E			
3	1416.00	S. 68°-53'-24"E			
4	741.41	S. 62°-57'-10"E			
5	660.75	S. 89°-28'-35"E			
6	164.65	N. 00°-05'-22"E			

Field Book No. E - 1231 Date 15 Aug. 1975

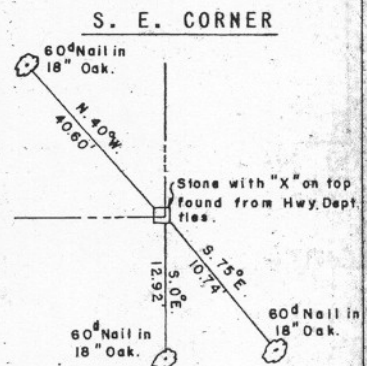
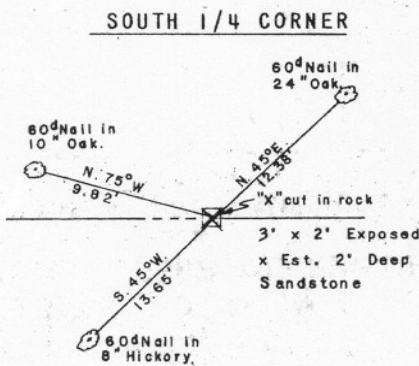
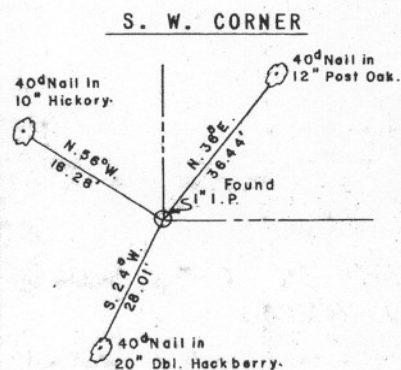
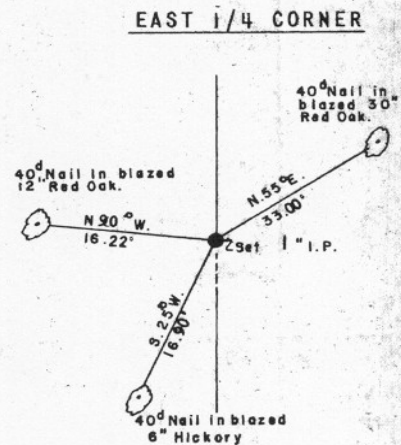
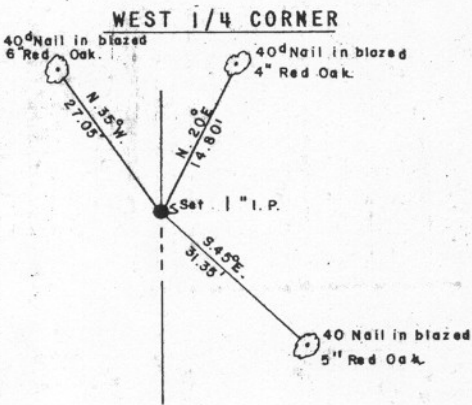
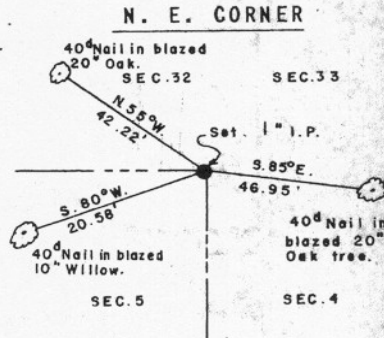
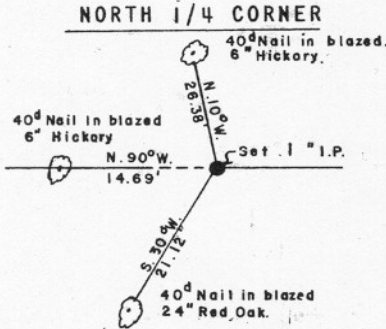
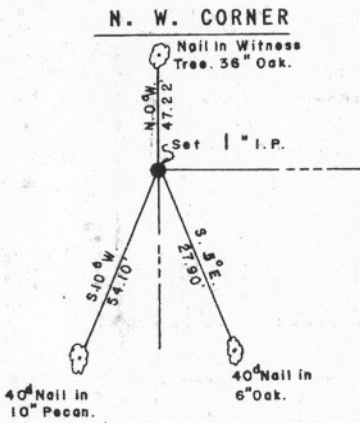
BY GROSSMAN & KEITH ENGINEERING CO.
 FOR
 DEPARTMENT OF THE ARMY, CORPS OF ENGINEERS, TULSA DISTRICT
 UNDER CONTRACT NO. DACW 56-75-C-0132

I, Guy N. Keith, a Registered Land Surveyor in the State of Oklahoma, do hereby certify that the above plat is a true and accurate survey of Section 5, T-11-N, R-14-E as made under my supervision.

Guy N. Keith
 Reg. No. 547 (Oklahoma)

- LEGEND
- △ Std. C. of E. Conc. Monument
 - Iron Pin Found
 - Iron Pins Set
 - Stones Found
 - ⊗ X Cut in rock

AREA "B" EUFAULA LAKE
CANADIAN RIVER, OKLAHOMA
SECTION AND QUARTER SECTION CORNER
REFERENCES FOR
SECTION 5, T-11-N, R-14-E
MCINTOSH COUNTY, OKLAHOMA



⊗ X Cut in rock

- LEGEND**
- △ MONUMENT C. of E.
 - Iron Pins Found
 - IRON PIN Set
 - Stones Found

Date: August 15, 1975