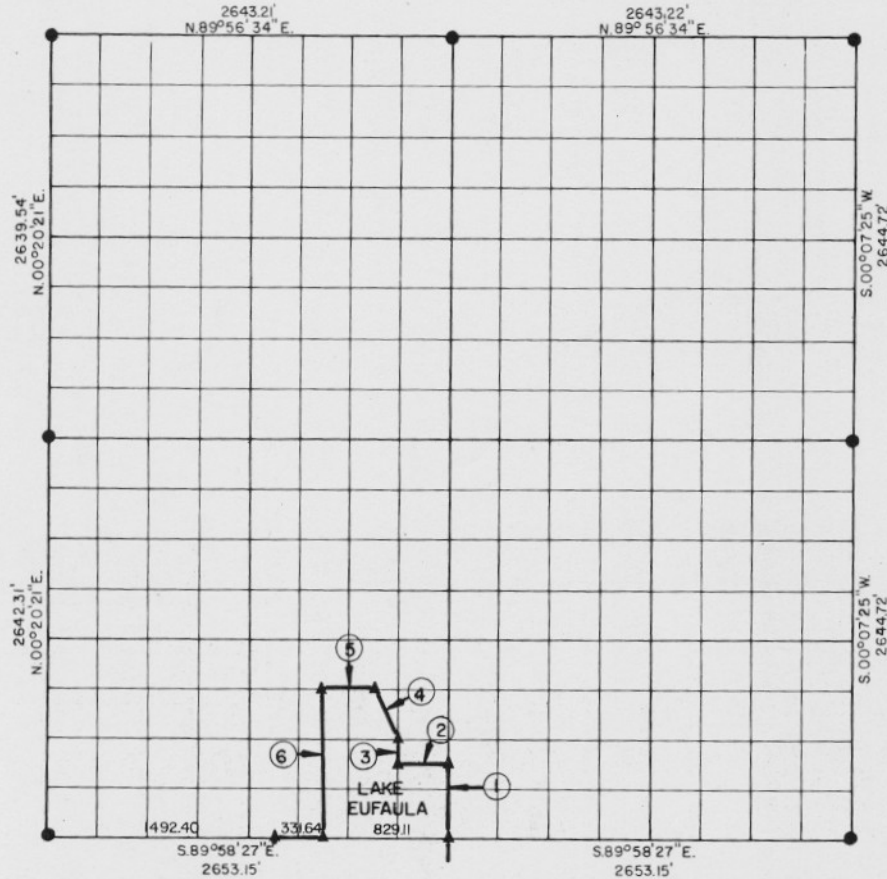


PARTIAL BOUNDARY SURVEYS
 EUFAULA LAKE
 OKLAHOMA

Performed Under Contract Number DACW 56-76-C-0067

SEC. 11, T. 11 N., R. 15 E., COUNTY McINTOSH



Course No.	Distance	Bearing	Course No.	Distance	Bearing
1	495.66'	N.00°13'53\"E.			
2	331.53'	N.89°58'45\"W.			
3	165.21'	N.00°14'41\"E.			
4	369.05'	N.26°26'04\"W.			
5	331.41'	N.89°59'03\"W.			
6	991.18'	S.00°15'54\"W.			

Field Book No. E1238 Date APRIL 1976

CERTIFICATE OF SURVEY
 I hereby Certify That The
 above Plat is a True and
 correct Representation of
 the Survey Made in Section

T. 11 N., R. 15 E.,
 COUNTY, OKLAHOMA
David P. Pierce
 Registered Professional Engineer
 Registered Land Surveyor

MAPCO ENGINEERING CORPORATION
 Under The Supervision Of
 U.S. ARMY ENGINEER DISTRICT, TULSA
 CORPS OF ENGINEERS

LEGEND
 ▲ MONUMENT
 □ ORIGINAL CORNER
 ○ IRON PIN

SHEET 1 of 2

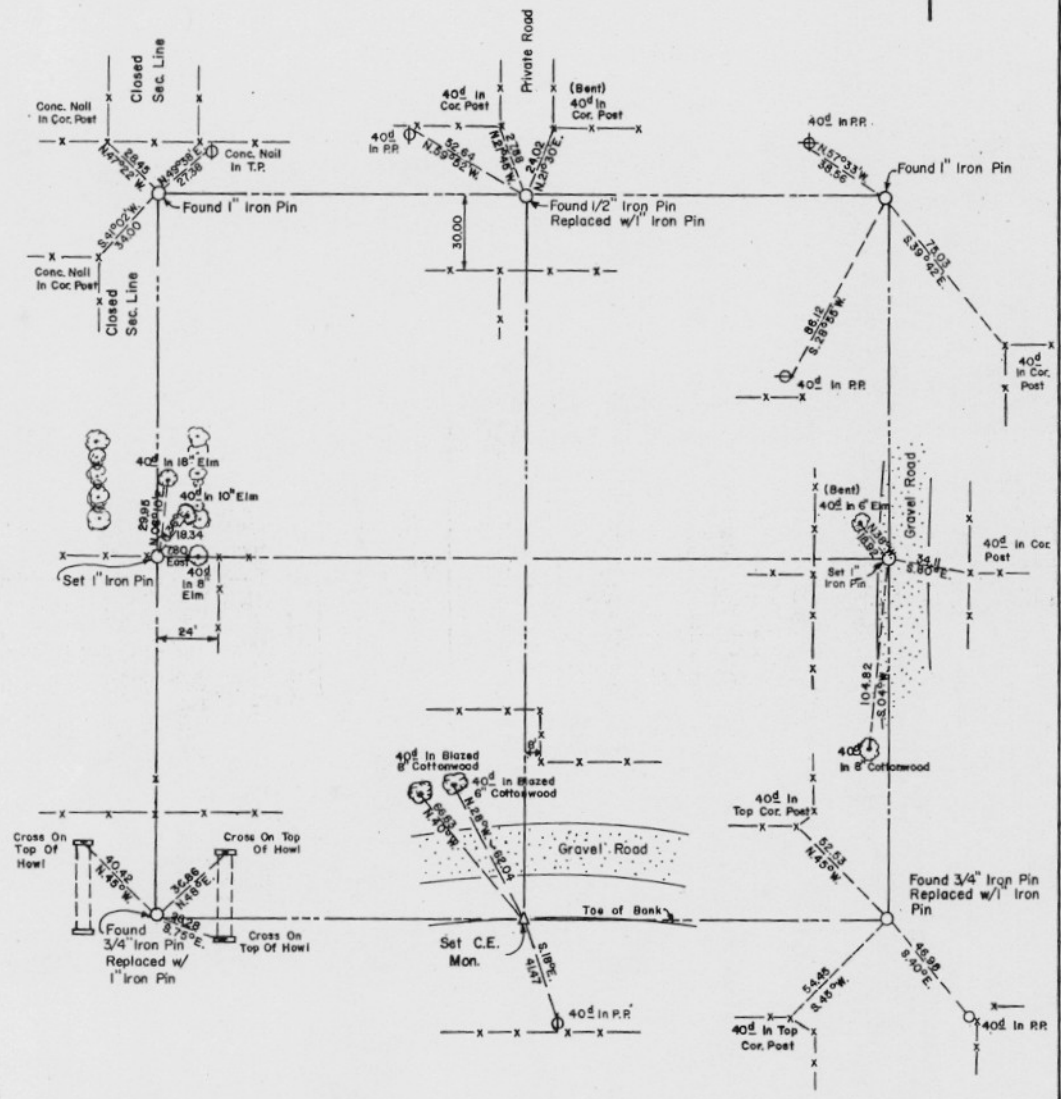
98

EUFAULA LAKE OKLAHOMA

SECTION AND QUARTER SECTION CORNER
REFERENCES FOR

SEC. II , T 11 N, R 15 E

COUNTY- MCINTOSH



Scale: 1" = 50'
Date: APRIL 1976
Field book No. E 1238

- LEGEND**
- △ - Monument
 - - Original Corner
 - - Iron pin