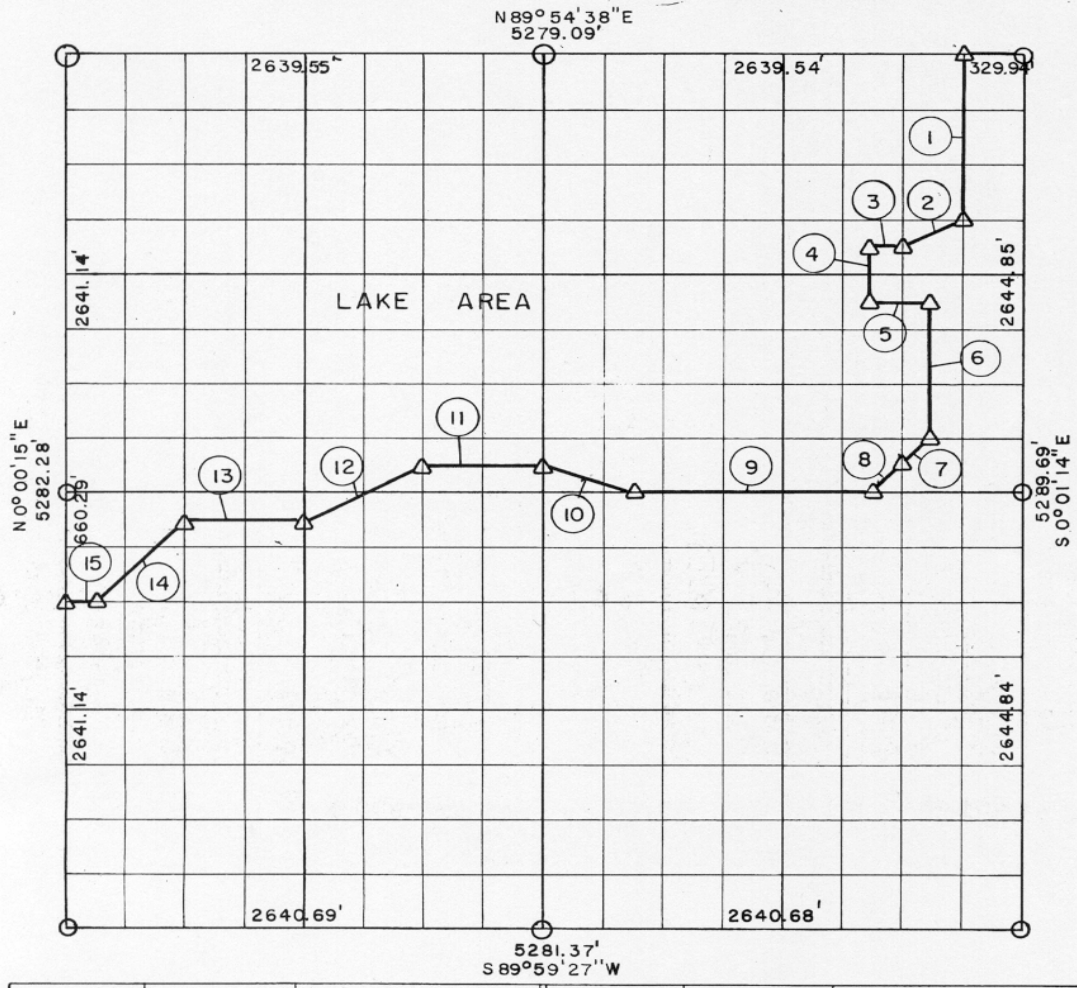


**PARTIAL BOUNDARY SURVEYS
EUFAULA LAKE
CANADIAN RIVERS, OKLAHOMA**
Performed Under Contract Number DACW 56-73-C-0218
SEC. 13, T 11 N, R 15 E McINTOSH COUNTY



Course No.	Distance	Bearing	Course No.	Distance	Bearing
1	991.73'	S 0° 01' 08" E	13	660.04'	S 89° 57' 12" W
2	369.19'	S 63° 19' 55" W	14	700.53'	S 44° 57' 59" W
3	164.99'	S 89° 55' 42" W	15	165.02'	S 89° 57' 39" W
4	330.53'	S 0° 01' 00" E			
5	329.98'	N 89° 56' 00" E			
6	826.40'	S 0° 01' 05" E			
7	233.61'	S 44° 55' 02" W			
8	233.61'	S 44° 55' 14" W			
9	1320.06'	S 89° 57' 03" W			
10	521.74'	N 71° 35' 29" W			
11	660.02'	S 89° 56' 54" W			
12	738.29'	S 63° 22' 33" W			

Field Book No. E-1193 Date: January, 1974

110

LEGEND
 Δ MONUMENT
 □ ORIGINAL CORNER
 ○ IRON PIN

M^CCOY, MECKLENBURG AND PARR, INC.
 Under the Supervision of
U.S. ARMY ENGINEER DISTRICT, TULSA
CORPS OF ENGINEERS

CERTIFICATE OF SURVEY
 I HEREBY CERTIFY THAT THE ABOVE PLAT IS A TRUE AND CORRECT REPRESENTATION OF THE SURVEY MADE IN SECTION 13, T 11 N, R 15 E, McINTOSH COUNTY, OKLAHOMA.

Robert I. McCoy
 ROBERT I. MCCOY

