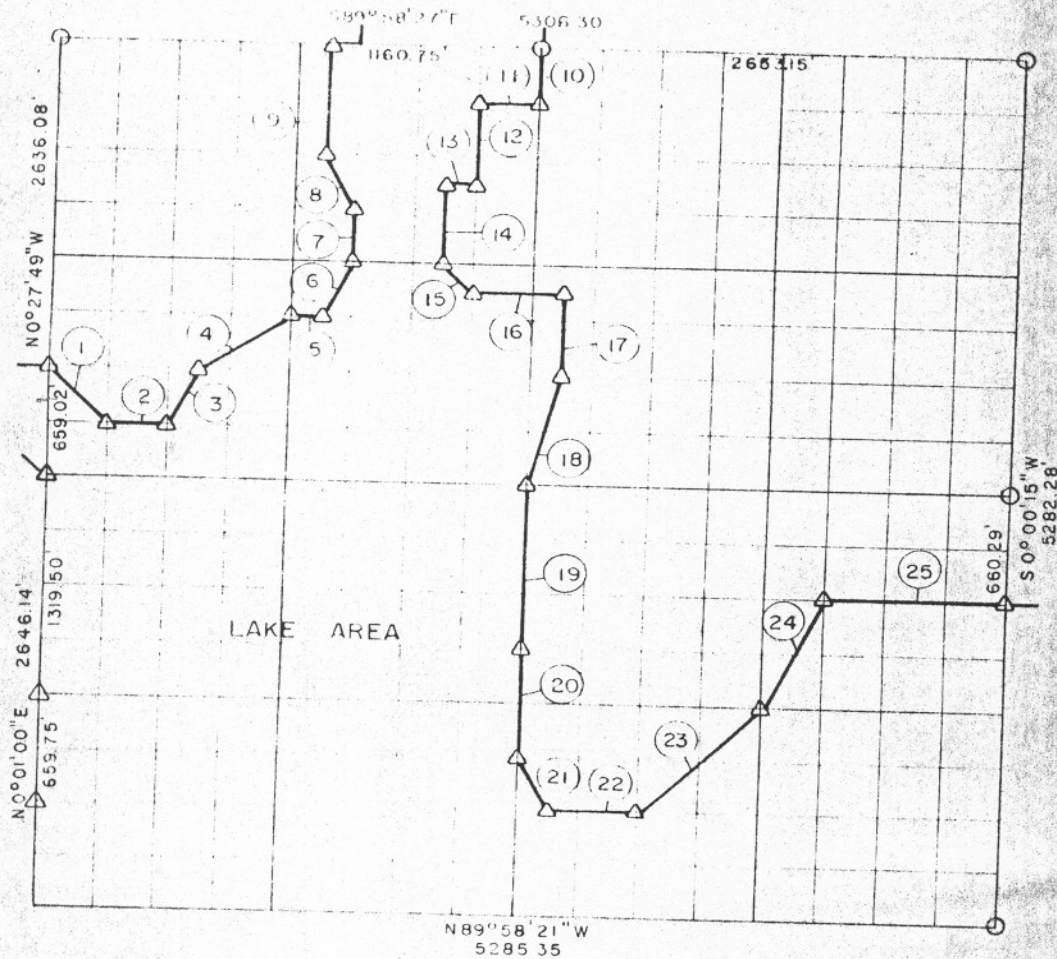


PARTIAL BOUNDARY SURVEYS  
 EUFAULA LAKE  
 CANADIAN RIVERS, OKLAHOMA  
 Performed Under Contract Number DACW 56-73-C-0218  
 SEC. 14, T 11 N, R 15 E McINTOSH COUNTY



Course No.	Distance	Bearing	Course No.	Distance	Bearing
1	468.43'	S45°13'29"E	14	494.64'	S0°10'33"E
2	329.86'	S89°55'31"E	15	233.91'	S45°07'23"E
3	367.47'	N26°18'55"E	16	496.14'	S89°56'34"E
4	593.18'	N56°18'19"E	17	494.76'	S0°06'09"E
5	165.19'	S89°56'21"E	18	679.61'	S13°59'30"W
6	367.99'	N26°25'48"E	19	991.37'	S0°06'34"E
7	329.70'	N0°14'32"W	20	660.91'	S0°06'34"E
8	369.67'	N26°50'59"W	21	369.86'	S26°38'50"E
9	659.37'	N0°15'52"W	22	495.75'	S89°57'32"E
10	329.82'	S0°06'34"E	23	933.74'	N45°00'41"E
11	331.39'	N89°58'02"W	24	738.18'	N26°34'23"E
12	494.67'	S0°09'13"E	25	992.48'	S89°54'55"E
13	165.50'	N89°57'24"W			

Field Book No. E-1197

Date: January, 1974

12553.59

LEGEND  
 A MONUMENT  
 □ ORIGINAL CORNER  
 ○ IRON PIN

MCCOY MECKLENBURG AND PARR, INC.

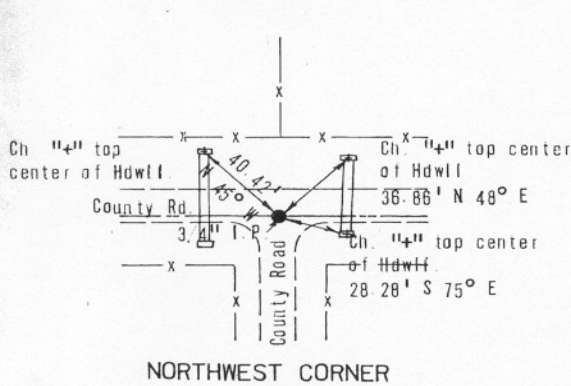
Under the Supervision of  
 U.S. ARMY ENGINEER DISTRICT, TULSA  
 CORPS OF ENGINEERS

CERTIFICATE OF SURVEY

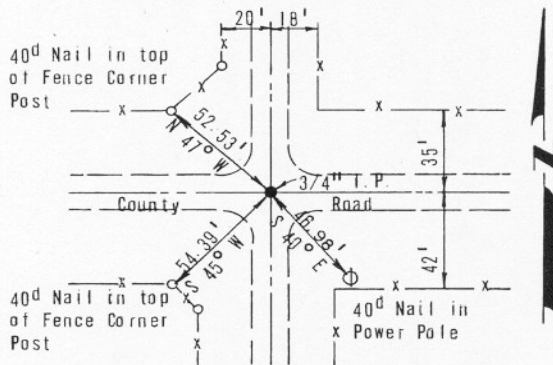
I HEREBY CERTIFY THAT THE ABOVE PLAT IS A TRUE AND CORRECT REPRESENTATION OF THE SURVEY MADE IN SECTION 14, T 11 N, R 15 E, MCINTOSH COUNTY, OKLAHOMA

ROBERT MCCOY  
 REG. LAND SURVEYOR NO. 32

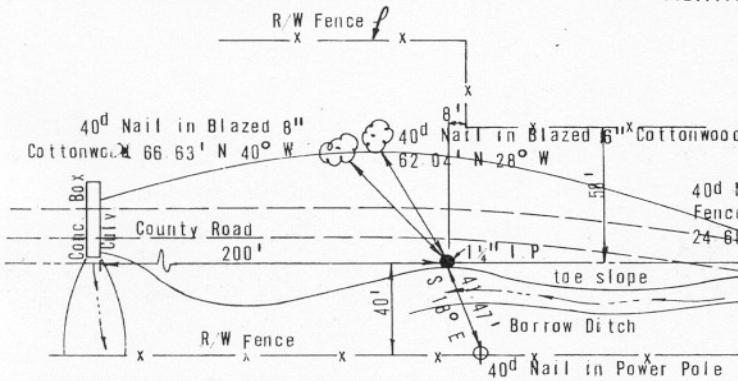
**EUFALA LAKE**  
 CANADIAN RIVERS, OKLAHOMA  
**SECTION AND QUARTER SECTION CORNER**  
**REFERENCES FOR**  
**SEC. 14, T 11 N, R 15 E, I.M. McINTOSH COUNTY**



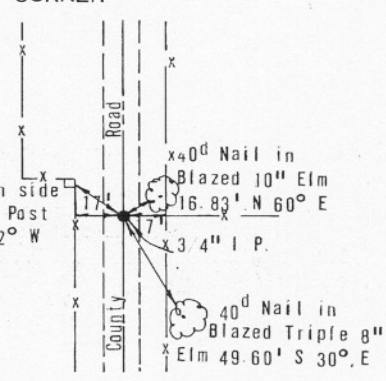
NORTHWEST CORNER



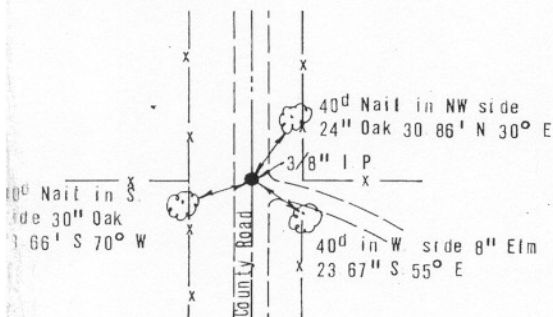
NORTHEAST CORNER



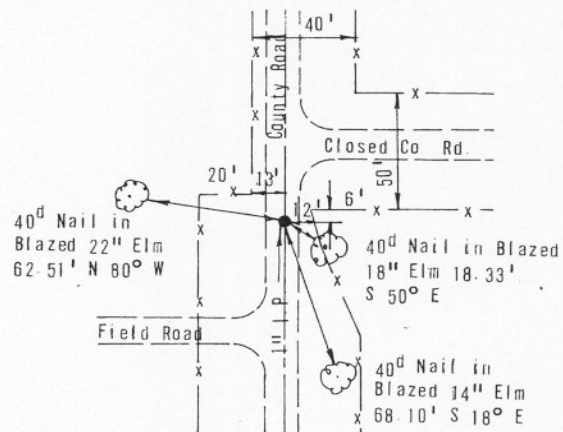
NOTE: Red Steel Post set 1' East of Iron Pin  
 NORTH QUARTER CORNER



EAST QUARTER CORNER



WEST QUARTER CORNER



SOUTHEAST CORNER

Scale:  
 Date: January, 1974  
 Field Book No. E-1197

SOUTHWEST CORNER  
 Corner is in lake and was not set.

SOUTH QUARTER CORNER  
 Corner is in lake and was not set.

- LEGEND  
 ◁ Monument  
 □ Original Corner  
 ○ Iron Pin