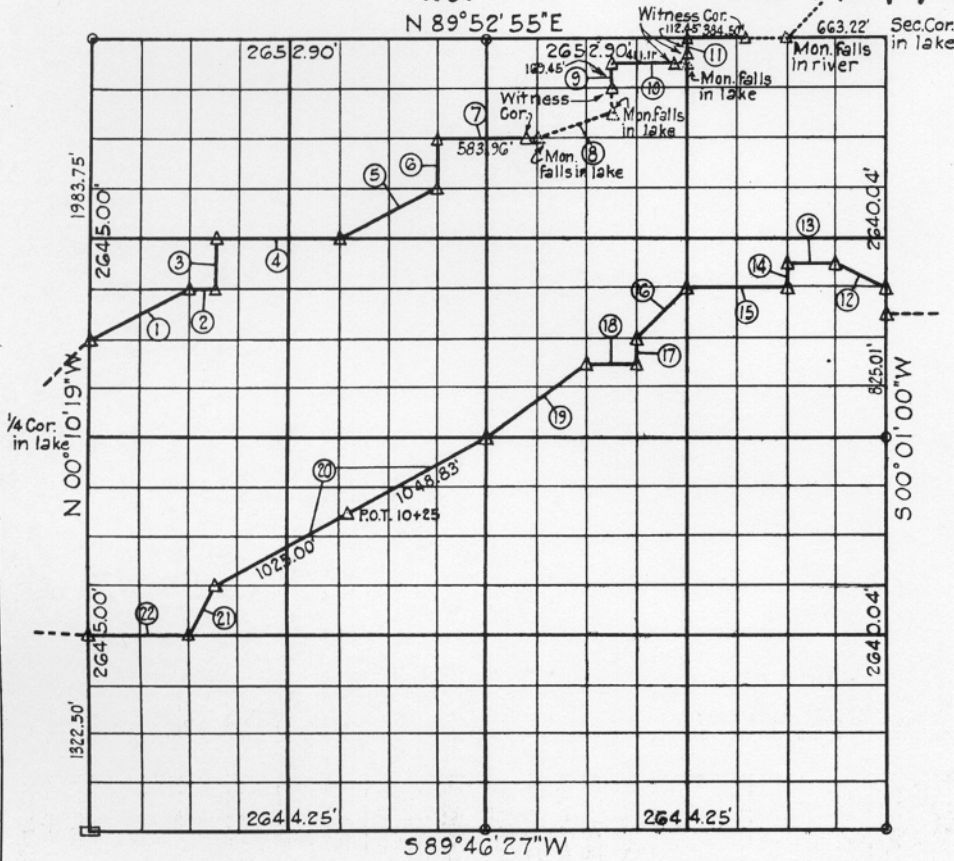


S. 22 T. 11 N. R. 15 E. COUNTY McI. SH

Revised: SEE Feb. 1974 plat



Course Number	Distance	Bearing	Course Number	Distance	Bearing
1	740.63	N 63° 23' 30" E	12	369.70	N 63° 38' 29" W
2	165.64	N 89° 50' 55" E	13	331.31	S 89° 52' 07" E
3	330.53	N 0° 08' 33" W	14	165.04	S 0° 00' 25" E
4	828.36	N 89° 51' 19" E	15	662.55	S 89° 50' 55" W
5	740.75	N 63° 22' 13" E	16	468.19	S 44° 59' 48" E
6	330.35	N 0° 05' 22" W	17	165.10	S 0° 02' 33" E
7	662.96	N 89° 52' 07" E	18	331.17	S 89° 50' 19" W
8	524.14	N 71° 30' 27" E	19	828.00	S 52° 55' 49" W
9	330.22	N 0° 02' 54" W	20	2073.83	S 61° 15' 49" W
10	497.37	N 89° 52' 43" E	21	369.69	S 26° 26' 55" W
11	165.08	N 0° 01' 50" W	22	661.60	S 89° 48' 04" W

Book No. E-11141

Date: May, 1971

I, Charles J. Finklea, hereby certify that the above plat is a true and correct representation of the survey made in Section 22, T11N, R15E.

LEGEND
 Δ Monument
 □ Original Stone
 ○ Iron Pin

Charles J. Finklea
 Registered Land Surveyor No. 35