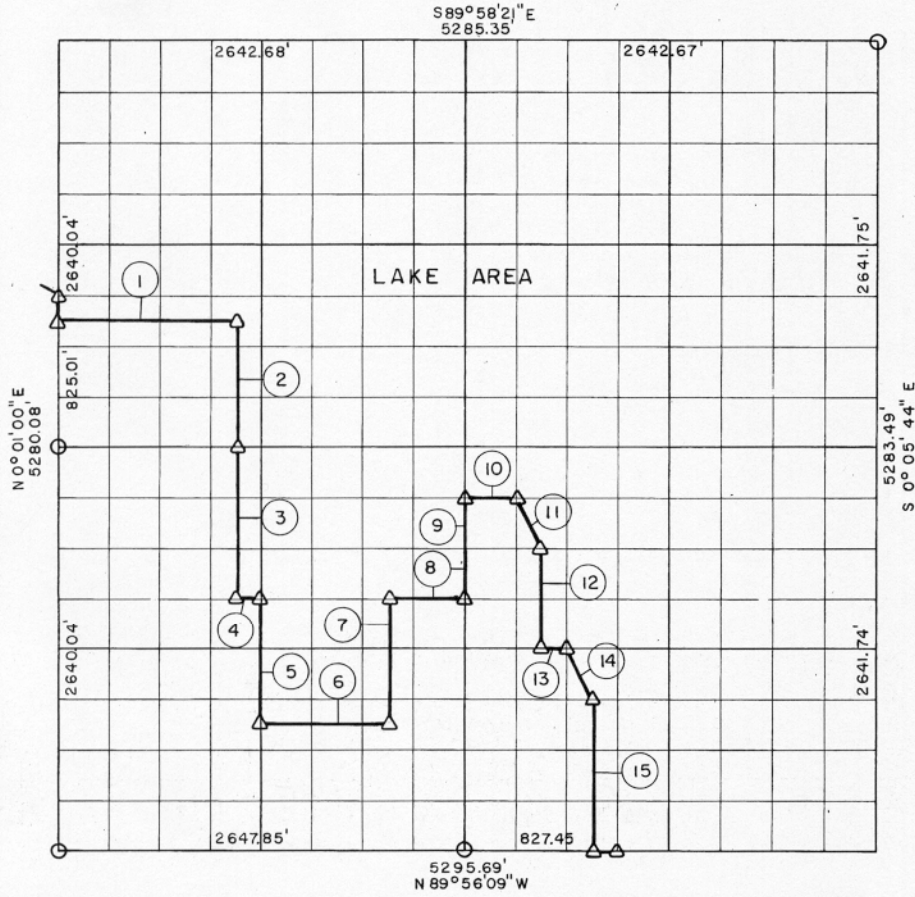


PARTIAL BOUNDARY SURVEYS
 EUFAULA LAKE
 CANADIAN RIVERS, OKLAHOMA
 Performed Under Contract Number DACW 56-73-C-0218
 SEC. 23, T 11 N, R 15 E McINTOSH COUNTY



Course No.	Distance	Bearing	Course No.	Distance	Bearing
1	1156.95'	S 89° 57' 35" E	13	165.41'	S 89° 56' 42" E
2	825.13'	S 0° 00' 28" E	14	369.55'	S 26° 38' 47" E
3	990.15'	S 0° 00' 28" E	15	990.43'	S 0° 03' 25" E
4	165.39'	S 89° 56' 50" E			
5	825.15'	S 0° 00' 41" E			
6	827.20'	S 89° 56' 29" E			
7	825.23'	N 0° 01' 44" W			
8	496.19'	S 89° 56' 50" E			
9	660.22'	N 0° 02' 22" W			
10	330.70'	S 89° 57' 07" E			
11	369.48'	S 26° 38' 04" E			
12	660.26'	S 0° 03' 00" E			

Field Book No. E-1196 Date: January, 1974

M^CCOY, MECKLENBURG AND PARR, INC.

- LEGEND**
 Δ MONUMENT
 □ ORIGINAL CORNER
 ○ IRON PIN

Under the Supervision of
 U.S. ARMY ENGINEER DISTRICT, TULSA
 CORPS OF ENGINEERS

124
 CERTIFICATE OF SURVEY

I HEREBY CERTIFY THAT THE ABOVE PLAT IS A TRUE AND CORRECT REPRESENTATION OF THE SURVEY MADE IN SECTION 23, T 11 N, R 15 E, McINTOSH COUNTY, OKLAHOMA.

Robert L. McCoy
 ROBERT L. McCOY
 REG. LAND SURVEYOR NO. 32

