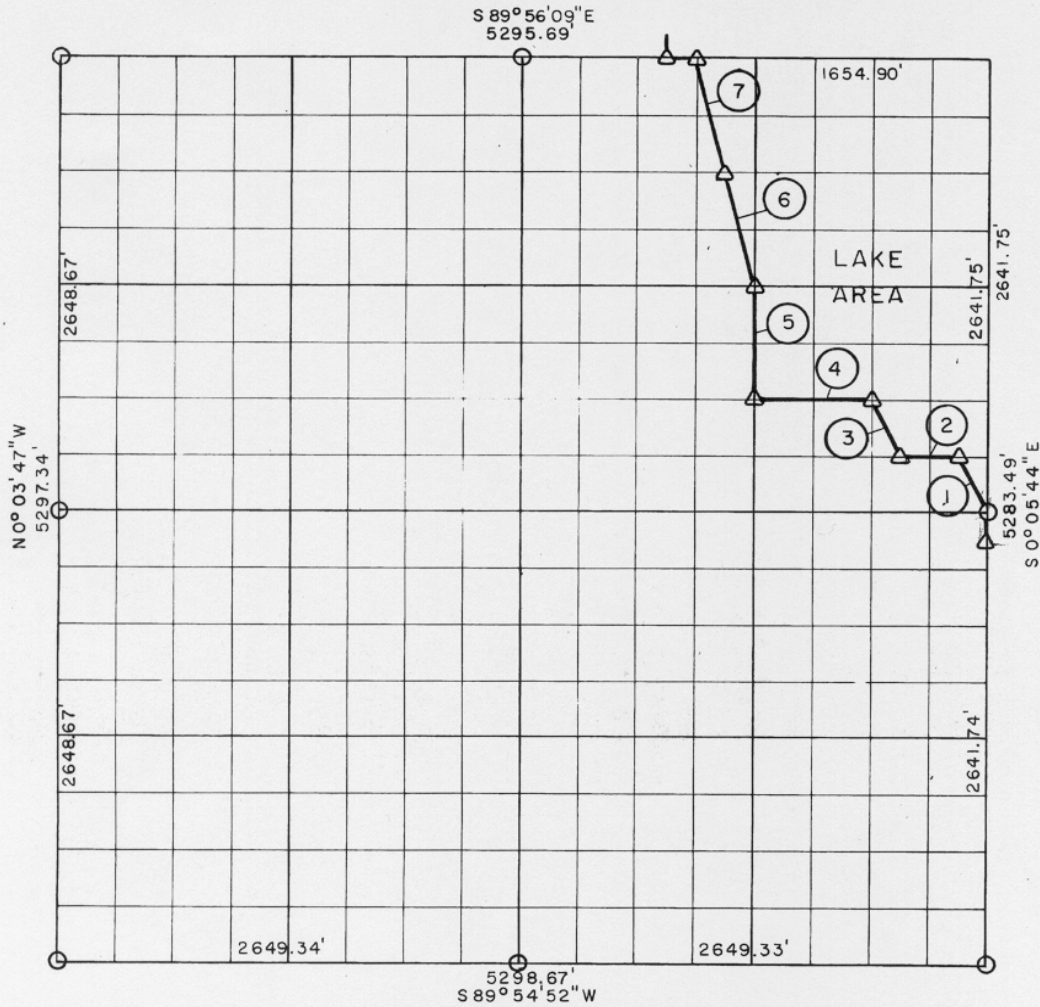


PARTIAL BOUNDARY SURVEYS  
 EUFAULA LAKE  
 CANADIAN RIVERS, OKLAHOMA  
 Performed Under Contract Number DACW 56-73-C-0218  
 SEC. 26, T 11 N, R 15 E McINTOSH COUNTY



Course No.	Distance	Bearing	Course No.	Distance	Bearing
1	369.63'	N 26° 42' 00" W			
2	331.06'	S 89° 59' 55" W			
3	369.71'	N 26° 41' 21" W			
4	662.10'	N 89° 59' 31" W			
5	660.87'	N 0° 05' 15" W			
6	681.70'	N 14° 08' 13" W			
7	681.70'	N 14° 08' 13" W			

Field Book No. E-1194 Date: January, 1974

139

M<sup>C</sup>COY, MECKLENBURG AND PARR, INC.

- LEGEND**
- △ MONUMENT
  - ORIGINAL CORNER
  - IRON PIN

Under the Supervision of  
 U.S. ARMY ENGINEER DISTRICT, TULSA  
 CORPS OF ENGINEERS

CERTIFICATE OF SURVEY

I HEREBY CERTIFY THAT THE ABOVE PLAT IS A TRUE AND CORRECT REPRESENTATION OF THE SURVEY MADE IN SECTION 26, T 11 N, R 15 E, McINTOSH COUNTY, OKLAHOMA.

*Robert M. Parr*  
 ROBERT M. PARR

