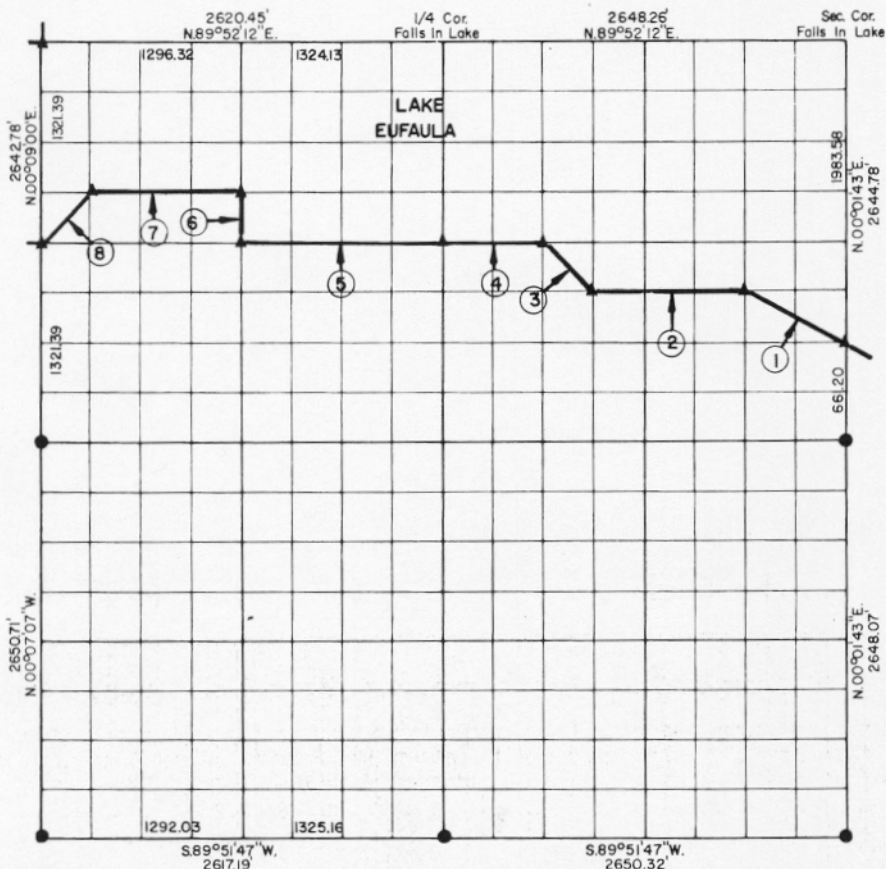


**PARTIAL BOUNDARY SURVEYS
EUFAULA LAKE
OKLAHOMA**

Performed Under Contract Number DACW 56-76-C-0067

SEC. 31, T. 11 N., R. 15 E., COUNTY McINTOSH



Course No.	Distance	Bearing	Course No.	Distance	Bearing
1	739.41'	N.63°33'30"W.			
2	993.34'	S.89°53'01"W.			
3	467.17'	N.45°05'19"W.			
4	662.20'	S.89°52'51"W.			
5	1324.38'	S.89°52'51"W.			
6	330.41'	N.00°03'43"E.			
7	973.38'	S.89°52'41"W.			
8	464.13'	S.44°30'05"W.			
	5954.42				

CERTIFICATE OF SURVEY

I Hereby Certify That The Above Plat is a True and Correct Representation of The Survey Mada in Section

31, T. 11 N., R. 15 E., COUNTY, OKLAHOMA.

Handwritten Signature
Registered Professional Engineer
Registered Land Surveyor

Field Book No. E 1240 Date APRIL 1976

MAPCO ENGINEERING CORPORATION
Under The Supervision Of
U.S. ARMY ENGINEER DISTRICT, TULSA
CORPS OF ENGINEERS
SHEET 1 of 2

LEGEND
▲ MONUMENT
□ ORIGINAL CORNER
○ IRON PIN

