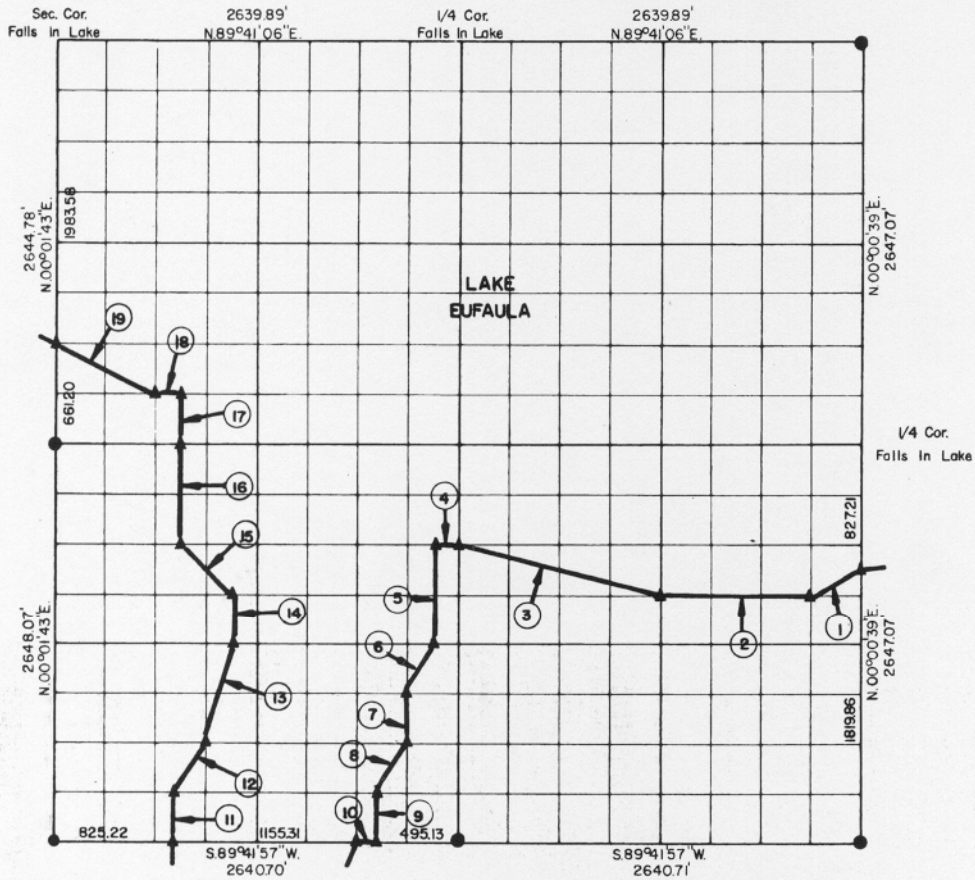


PARTIAL BOUNDARY SURVEYS
EUFULA LAKE
OKLAHOMA

Performed Under Contract Number DACW 56-76-C-0067

SEC. 32, T. 11 N., R. 15 E., COUNTY McINTOSH



Course No.	Distance	Bearing	Course No.	Distance	Bearing
1	369.99'	S.63°08'33\"W.	14	330.98'	N.00°01'29\"E.
2	990.17'	S.89°42'22\"W.	15	466.12'	N.45°03'09\"W.
3	1359.32'	N.76°12'10\"W.	16	661.98'	N.00°01'33\"E.
4	165.02'	S.89°42'27\"W.	17	330.64'	N.00°01'33\"E.
5	661.90'	N.00°01'13\"E.	18	165.01'	N.89°42'25\"W.
6	370.63'	S.26°27'39\"W.	19	736.56'	N.63°37'27\"W.
7	330.95'	N.00°01'15\"E.			
8	370.65'	S.26°27'41\"W.			
9	330.96'	N.00°01'17\"E.			
10	1650.4'	S.89°41'57\"W.			
11	330.99'	N.00°01'33\"E.			
12	370.69'	N.26°27'46\"E.			
13	683.13'	N.14°00'18\"E.			

CERTIFICATE OF SURVEY

I hereby Certify That The Above Plat is a True and Correct Representation of The Survey Made in Section 32, T.11 N., R.15 E., COUNTY, OKLAHOMA

Frank P. Lewis
Registered Professional Engineer
Registered Land Surveyor

Field Book No. E 1241 Date APRIL 1976

MAPCO ENGINEERING CORPORATION
Under The Supervision Of
U.S. ARMY ENGINEER DISTRICT, TULSA
CORPS OF ENGINEERS

LEGEND

- ▲ MONUMENT
- ORIGINAL CORNER
- IRON PIN

SHEET 1 of 2

152

