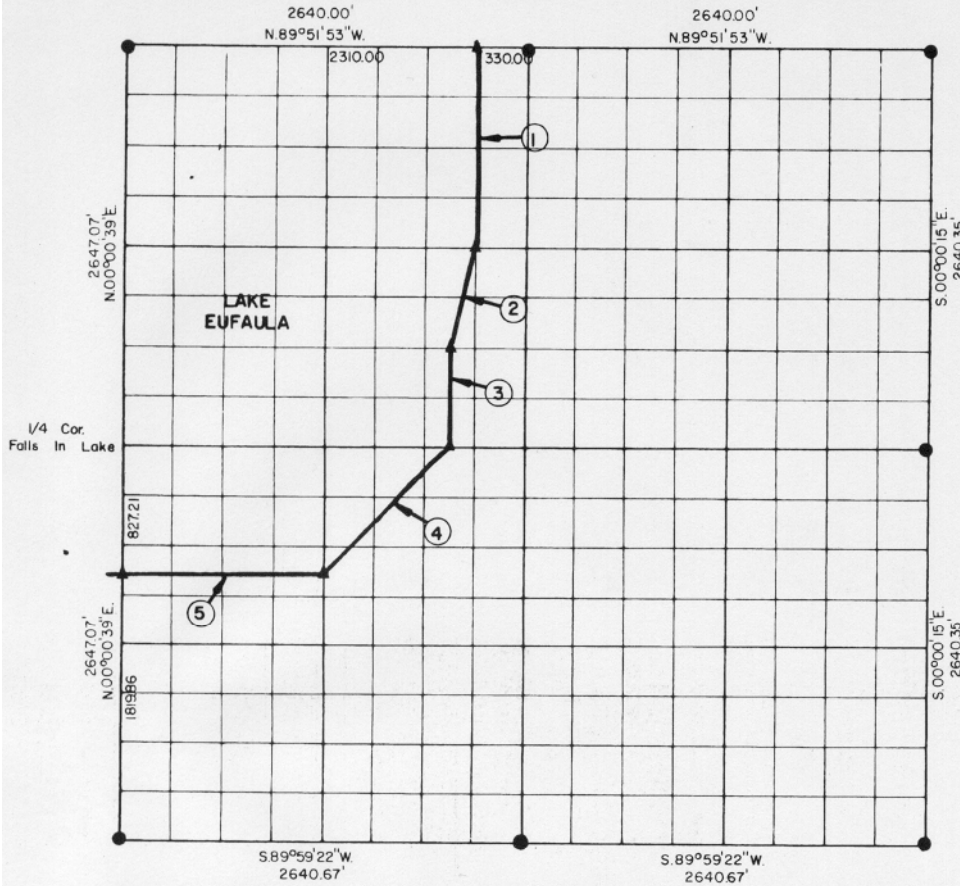


**PARTIAL BOUNDARY SURVEYS
EUFAULA LAKE
OKLAHOMA**

Performed Under Contract Number DACW 56-76-C-0067

SEC. 33, T. 11 N., R. 15 E., COUNTY McINTOSH



Course No.	Distance	Bearing	Course No.	Distance	Bearing
1	1322.06'	S.00°00'15" W.			
2	681.10'	S.14°01'31" W.			
3	661.08'	S.00°00'17" W.			
4	1167.41'	S.44°58'48" W.			
5	1320.22'	N.89°57'37" W.			

CERTIFICATE OF SURVEY
I Herby Certify That The
Above Plat is a True and
Correct Representation of
The Survey Made in Section
33 T. 11 N., R. 15 E.,
COUNTY, OKLAHOMA
Frank P. Lewis
Registered Professional Engineer
Registered Land Surveyor

Field Book No. E 1242 Date APRIL 1976
MAPCO ENGINEERING CORPORATION
Under The Supervision Of
U.S. ARMY ENGINEER DISTRICT, TULSA
CORPS OF ENGINEERS
SHEET 1 of 2

LEGEND
▲ MONUMENT
□ ORIGINAL CORNER
○ IRON PIN

153

