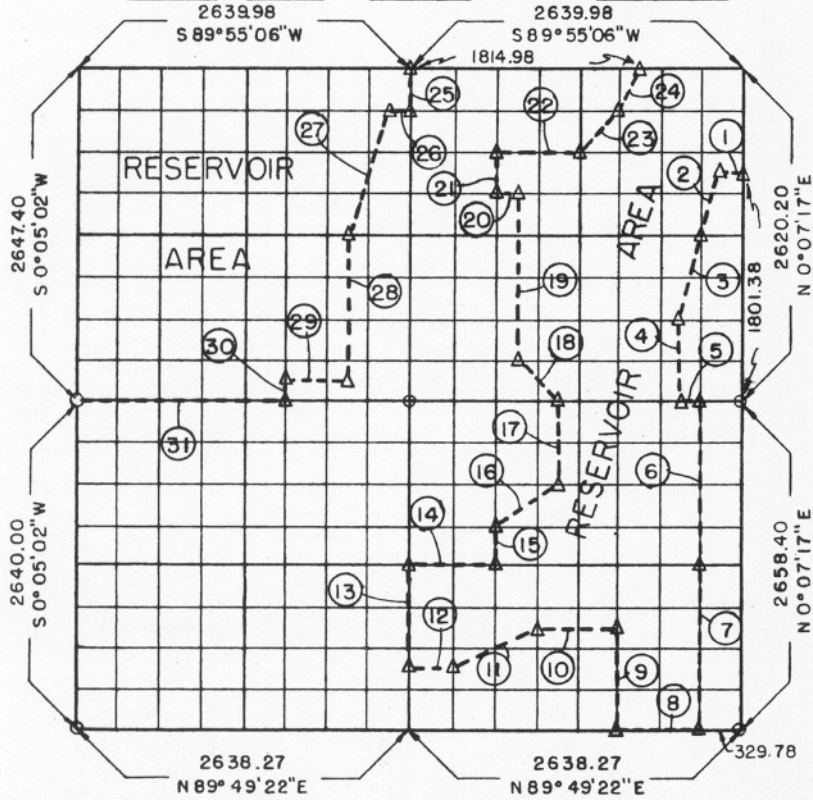


PARTIAL BOUNDARY SURVEYS
 EUFAULA RESERVOIR
 CANADIAN RIVER, OKLAHOMA
 Performed Under Contract Number DACW 56-70-C

SEC. 5 T. 11 N. R. 15 E. COUNTY MCINTOSH



Course No.	Distance	Bearing	Course No.	Distance	Bearing
1	164.98	S 89° 49' 34" W	17	663.31	N 0° 06' 39" E
2	519.35	S 18° 38' 27" W	18	463.72	N 45° 14' 24" W
3	677.09	S 14° 13' 11" W	19	1314.78	N 0° 06' 31" E
4	655.69	S 0° 07' 05" W	20	164.98	S 89° 48' 28" W
5	164.95	N 89° 37' 23" E	21	328.80	N 0° 06' 26" E
6	1328.62	S 0° 07' 08" W	22	659.94	N 89° 50' 41" E
7	1328.62	S 0° 07' 08" W	23	466.47	N 45° 08' 10" E
9	829.67	N 0° 06' 51" E	24	367.81	N 26° 46' 04" E
10	659.64	S 89° 45' 37" W	25	329.23	S 0° 06' 09" W
11	739.94	S 63° 09' 45" W	26	164.99	S 89° 52' 53" W
12	329.80	S 89° 47' 07" W	27	1043.44	S 18° 32' 06" W
13	827.87	N 0° 06' 10" E	28	1153.40	S 0° 05' 57" W
14	659.68	N 89° 43' 22" E	29	494.86	S 89° 38' 30" W
15	331.44	N 0° 06' 27" E	30	164.93	S 0° 05' 45" W
16	597.64	N 55° 59' 32" E	31	1649.50	S 89° 37' 23" W
8*	659.57	S 89° 49' 22" W			
* This is not on the Boundary Line					

CERTIFICATE OF SURVEY

I HEREBY CERTIFY THAT THE ABOVE PLAT IS A TRUE AND CORRECT REPRESENTATION OF THE SURVEY MADE IN SECTION 5, T. 11 N., R. 15 E., MCINTOSH COUNTY, OKLAHOMA

Edward M. Coon
 LICENSED LAND SURVEYOR

Field Book No. E-1133, Date 9-15-70

PHILLIPS & STONG ENGINEERING CO.
 Under the Supervision of
 U.S. ARMY ENGINEER DISTRICT, TULSA
 CORPS OF ENGINEERS
 SHEET 1 of 1

LEGEND

- ▲ MONUMENT
- ORIGINAL CORNER
- IRON PIN

85