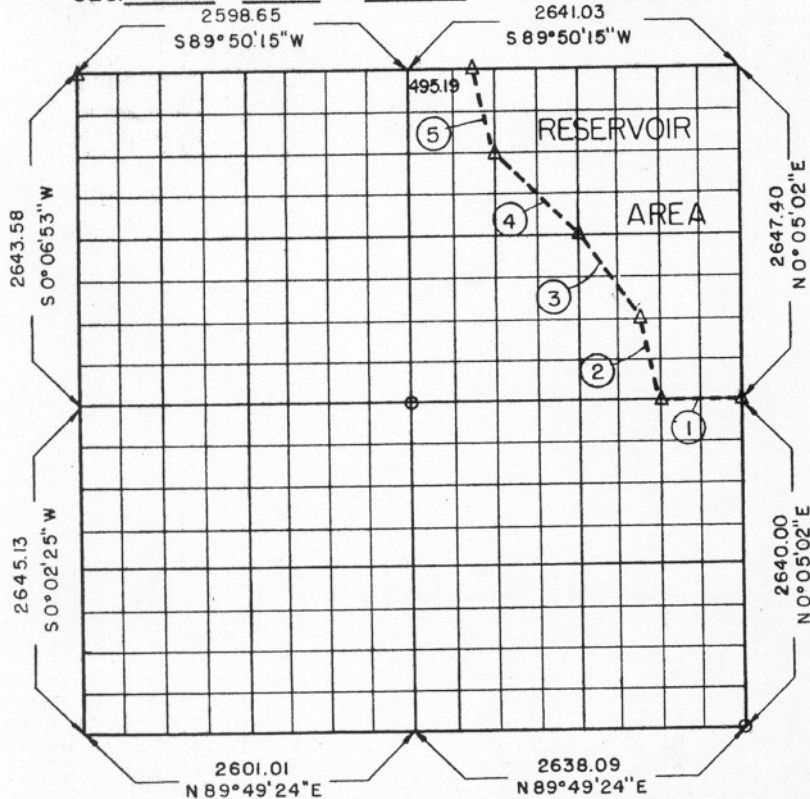


PARTIAL BOUNDARY SURVEYS
 EUFAULA RESERVOIR
 CANADIAN RIVER, OKLAHOMA
 Performed Under Contract Number DACW 56-70-C

SEC. 6 T-11N R-15E COUNTY MCINTOSH



| Course No. | Distance | Bearing |
|---------------------|----------|-------------------------------|
| 1 † | 659.92 | S 89°52'46" W |
| 2 | 681.41 | N 13°56'12" W |
| 3 | 824.90 | N 36°48'20" W |
| 4 | 932.83 | N 44°58'44" W |
| 5 * | 681.14 | N 13°57'44" W |
| † This monument set | 0.43' | S 69°03'03" W of actual point |
| * This monument set | 4.73' | S 79°56'30" E of actual point |
| 3780.20 | | |

| Course No. | Distance | Bearing |
|------------|----------|---------|
| | | |
| | | |
| | | |
| | | |
| | | |
| | | |
| | | |
| | | |
| | | |
| | | |
| | | |
| | | |
| | | |
| | | |
| | | |
| | | |
| | | |
| | | |
| | | |

Field Book No. E-1135 Date 9-15-70

CERTIFICATE OF SURVEY

I HEREBY CERTIFY THAT THE ABOVE PLAT IS A TRUE AND CORRECT REPRESENTATION OF THE SURVEY MADE IN SECTION 6, T-11N, R-15E, MCINTOSH COUNTY, OKLAHOMA

Edward M. Caou
 LICENSED LAND SURVEYOR

PHILLIPS & STONG ENGINEERING CO.
 Under the Supervision of
 U.S. ARMY ENGINEER DISTRICT, TULSA
 CORPS OF ENGINEERS .
 SHEET 1 of 1

LEGEND
 Δ MONUMENT
 □ ORIGINAL CORNER
 ○ IRON PIN

84