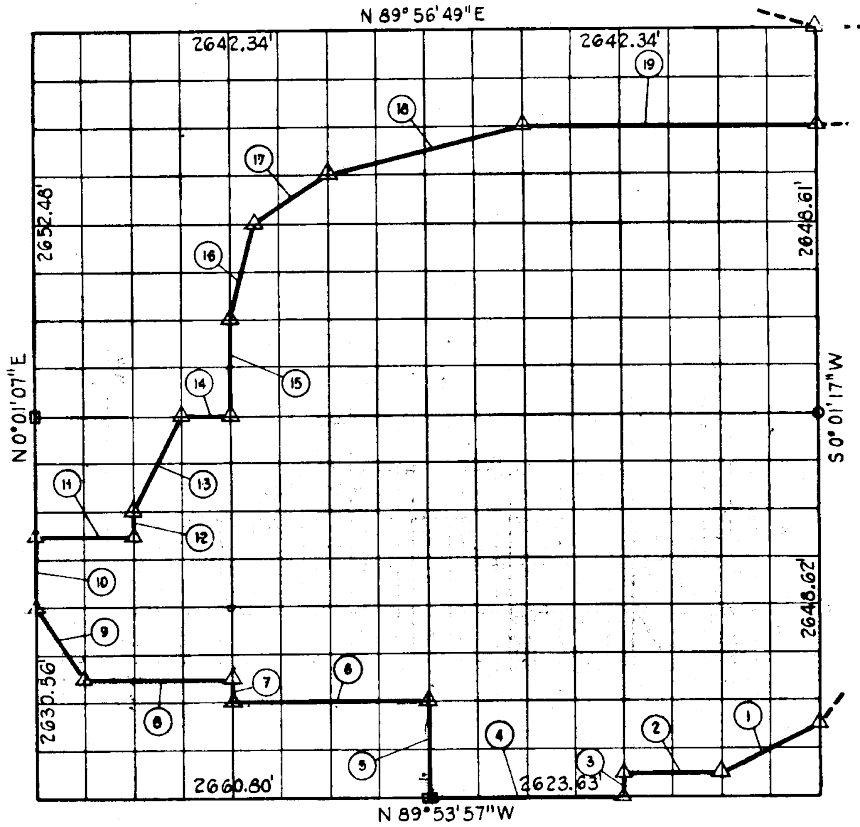


54
 S. 10 - T11N - R16 CANTOSH COUNTY



Course No.	Distance	Bearing	Course No.	Distance	Bearing
1	734.51	S 63° 17' 47" W	11	663.62	N 89° 57' 58" E
2	656.95	N 89° 54' 41" W	12	164.48	N 0° 01' 53" W
3	165.29	S 0° 04' 48" E	13	737.02	N 26° 41' 39" E
4	1312.62	N 89° 53' 57" W	14	331.45	N 89° 54' 18" E
5	658.62	N 0° 10' 53" W	15	662.78	N 0° 04' 53" W
6	1329.29	N 89° 56' 53" W	16	682.24	N 13° 55' 56" E
7	164.69	N 0° 04' 53" W	17	596.49	N 56° 10' 38" E
8	996.72	N 89° 57' 37" W	18	1361.71	N 75° 51' 05" E
9	596.79	N 33° 56' 21" W	19	1980.00	N 89° 56' 11" E
10	493.23	N 0° 31' 07" E			

Book No. E-1037 Date: July, 1965

101

I, Charles J. Finklea, A Registered Professional Engineer, do hereby certify that the above is a true and accurate survey of Sec. 10-T11N-R16 E made under my supervision.

Charles J. Finklea
 Charles J. Finklea
 Reg. Prof. Eng'r. No. 1063