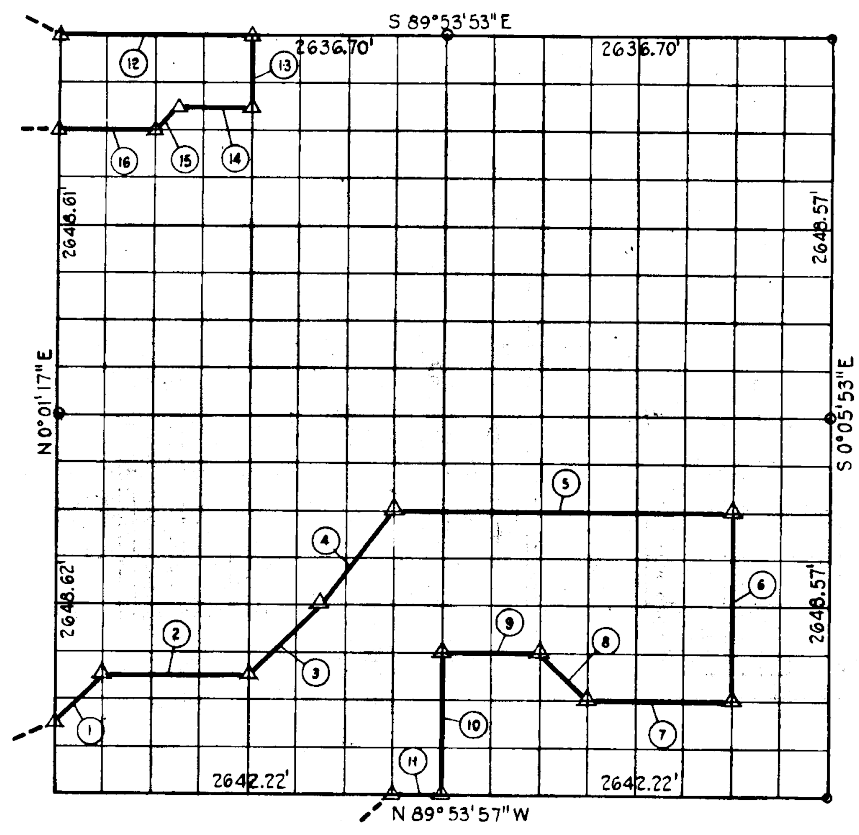


263.68'

EC. 11 - T11N - R16 ACINTOSH COUNT



Course No.	Distance	Bearing	Course No.	Distance	Bearing
1	467.25	N 44° 58' 54" E			
2	990.51	S 89° 53' 56" E			
3	700.62	N 44° 57' 45" E			
4	825.90	N 36° 48' 21" E			
5	2310.08	S 39° 55' 55" E			
6	1324.94	S 0° 04' 59" E			
7	990.57	N 89° 53' 57" W			
8	468.21	N 44° 54' 02" W			
9	660.28	N 89° 53' 56" W			
10	993.22	S 0° 02' 18" E			
11	330.28	N 89° 53' 57" W			
12	1318.35	S 89° 53' 53" E			
13	496.61	S 0° 00' 31" E			
14	494.40	N 89° 53' 53" W			
15	233.11	S 44° 35' 50" W			
16	659.35	N 89° 53' 54" W			

Book No. E-1038 Date: July, 1965

102

I, Charles J. Finklea, A Registered Professional Engineer, do hereby certify that the above is a true and accurate survey of Sec. 11-T 11 N-R 16 E as made under my supervision.

Charles J. Finklea
Reg. Prof. Eng'r. No 1063