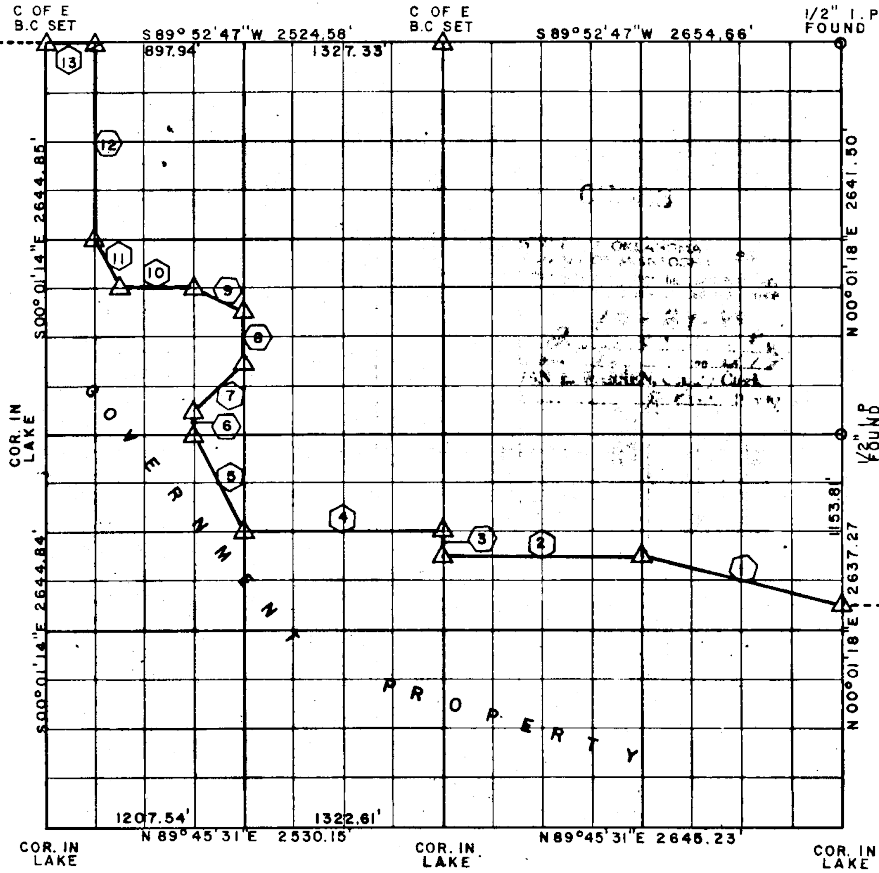


415

PARTIAL BOUNDARY SURVEYS
EUFULA LAKE
CANADAIN RIVER, OKLAHOMA

Performed Under Contract Number DACW56-80-D-0038

SEC. 18 T-11-N, R-16-E, COUNTY MCINTOSH

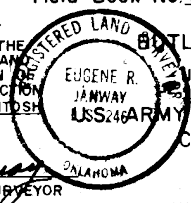


Course No.	Distance	Bearing	Course No.	Distance	Bearing
1	1363.61'	N 76° 11' 33" W			
2	1324.23'	S 89° 49' 00" W			
3	165.07'	N 00° 04' 50" W			
4	1324.38'	S 89° 49' 19" W			
5	725.80'	N 24° 35' 54" W			
6	165.27'	N 00° 06' 15" W			
7	446.80'	N 42° 08' 11" E			
8	330.51'	N 00° 07' 55" W			
9	342.58'	N 61° 18' 07" W			
10	460.17'	S 89° 51' 24" W			
11	362.82'	N 24° 28' 44" W			
12	1322.33'	N 00° 02' 54" W			
13	299.31'	S 89° 52' 47" W			

Field Book No. E-1396 Date OCTOBER, 1980

CERTIFICATE OF SURVEY

I HEREBY CERTIFY THAT THE ABOVE PLAT IS A TRUE AND CORRECT REPRESENTATION OF THE SURVEY MADE IN SECTION 18, T11N, R16E, MCINTOSH COUNTY, OKLAHOMA.



Under the Supervision of
ENGINEER DISTRICT, TULSA
CORPS OF ENGINEERS

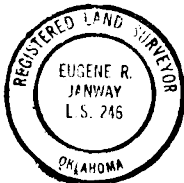
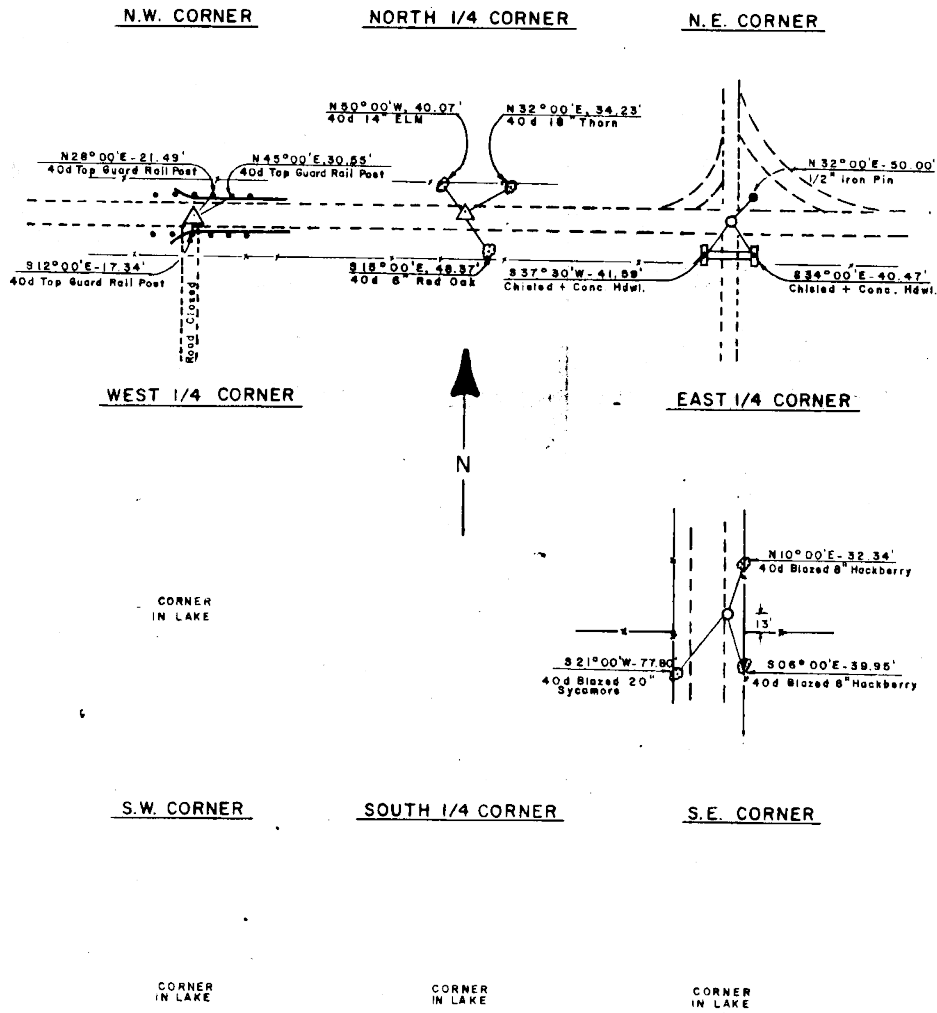
LEGEND

- Δ MONUMENT
- ORIGINAL CORNER
- IRON PIN
- * COMPUTED DISTANCE

Eugene R. Janway
REGISTERED LAND SURVEYOR

SHEET 1 of 2

EUFULA LAKE
CANADIAN RIVER, OKLAHOMA
SECTION AND QUARTER SECTION CORNER
REFERENCES FOR
SEC. 18, T11N, R16E, MCINTOSH COUNTY,



Eugene R. Janway
Registered Land Surveyor

BUTLER ASSOCIATES, INC.

Scale: 1" = 50'
Date:
Field Book No.

LEGEND

- △ Monument
- Original Corner
- Iron Pin