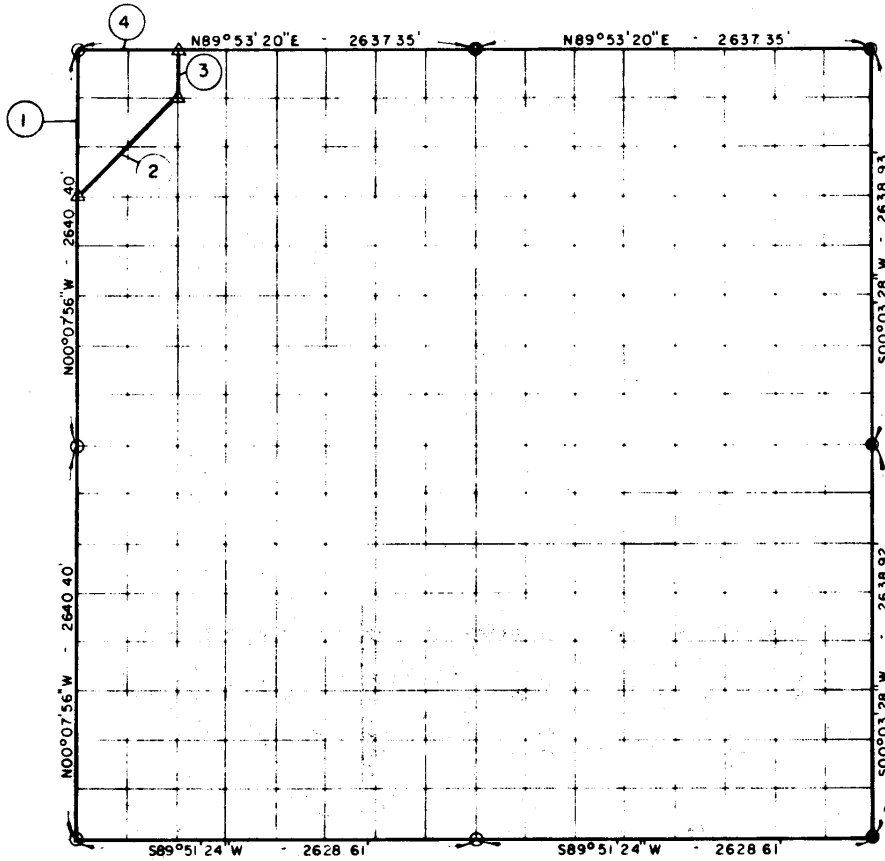


PARTIAL BOUNDARY SURVEYS
 EUFAULA JOIR
 CANADIAN RIVER, OKLAHOMA

Performed Under Contract Number DACW 56-70-C-0151

SEC. 22 T-11-N R-16-E COUNTY McINTOSH



Course No	Distance	Bearing	Course No	Distance	Bearing
1	990.15'	S00°07'56\"E			
2	932.73'	N44°50'18\"E			
3	330.03'	N00°06'27\"W			
4	659.34'	S89°53'20\"W			
	2,912.25'				

- LEGEND
 ▲ MONUMENT SET
 ▲ MONUMENT FD
 ○ 5/8\" IRON PIN SET
 ● IRON PINS FD
 ⊙ SEC. COR UNDER WATER

TOPOGRAPHIC ENGINEERING CO
 Under the Supervision of
 DEPARTMENT OF THE ARMY
 TULSA DISTRICT CORPS OF ENGINEERS

128

Field Book No
 E-1128
 Date 9/9/70
 Sheet 1 of 1

SURVEYOR'S CERTIFICATION

I, Arnold R Irwin, Oklahoma registered land surveyor number 334, do hereby certify that this plat represents the results of an on the ground survey made in Section 22, T11N, R16E under my supervision and is true and correct to the best of my knowledge

Arnold R. Irwin
 Arnold R. Irwin, Okla. Reg. No. 334