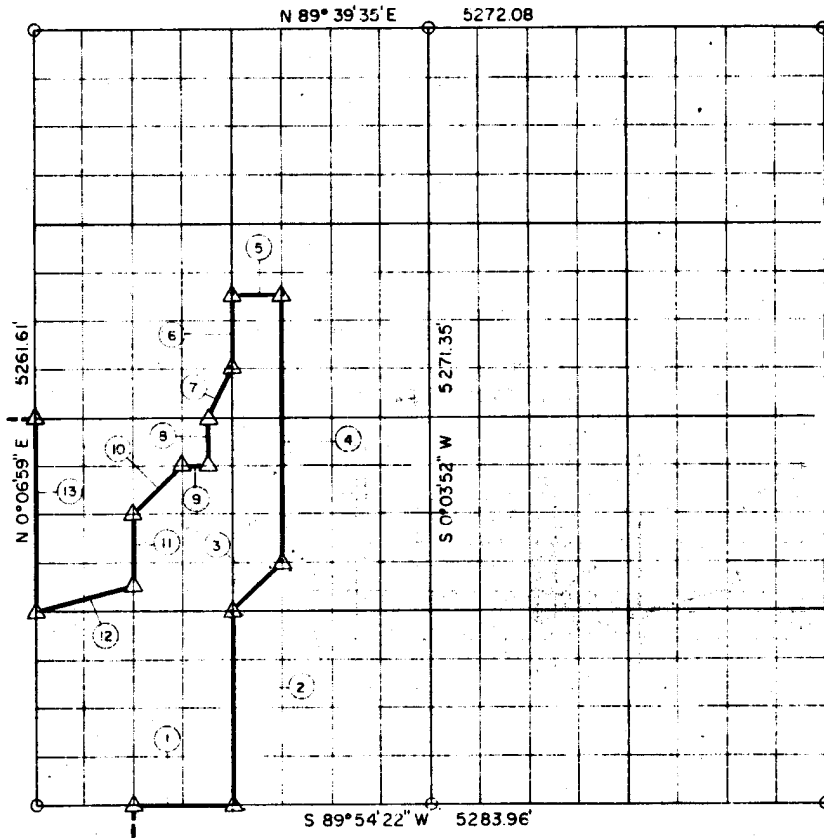


SEC. 24, T11N, R16E, McINTOSH COUNTY



Course No.	Distance	Bearing	Course No.	Distance	Bearing
1	660.50'	N 89° 54' 22" E			
2	1316.62'	N 0° 05' 26" E			
3	467.17'	N 45° 02' 11" E			
4	1810.77'	N 0° 05' 02" E			
5	329.76'	S 89° 44' 40" W			
6	493.73'	S 0° 05' 26" W			
7	368.96'	S 26° 38' 38" W			
8	329.12'	S 0° 05' 38" W			
9	164.96'	S 89° 47' 54" W			
10	467.08'	S 45° 02' 40" W			
11	493.50'	S 0° 06' 12" W			
12	681.03'	S 75° 52' 01" W			
13	1315.40'	N 0° 06' 59" E			

Book No. E-889

Date: July, 1964

130

I, James E. Curry, a Registered Professional Engineer, do hereby certify that the above plat is a true and accurate survey of Sec. 24, T11N, R16E as made under my supervision.

James E. Curry
 JAMES E. CURRY
 Reg. Prof. Eng. No. 1872