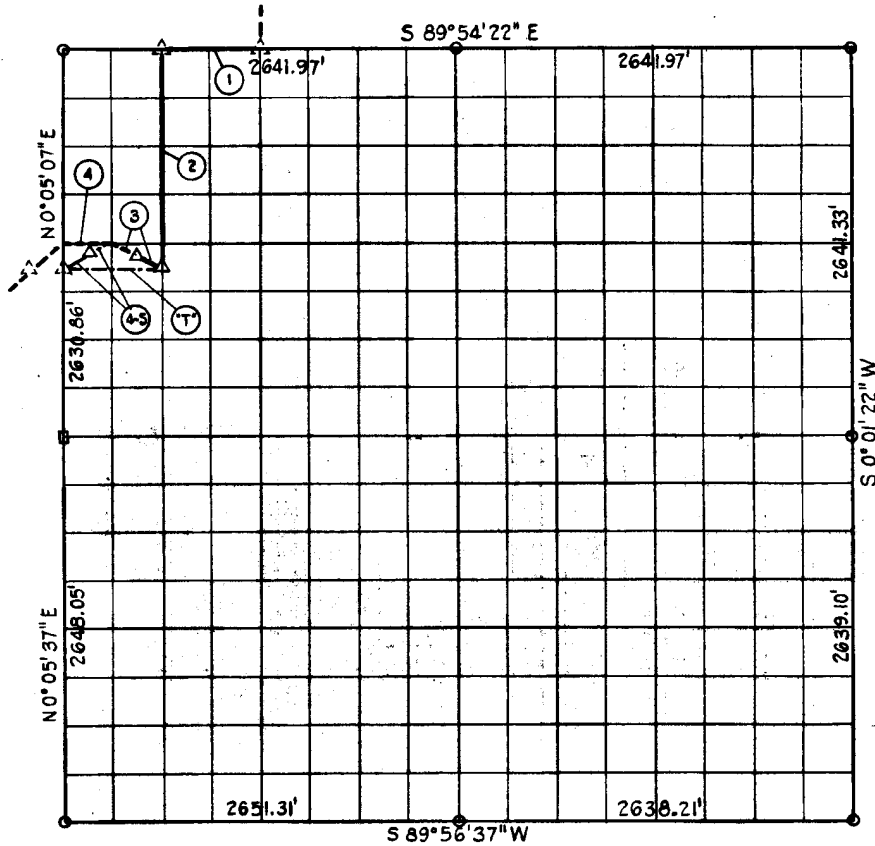


SEC. 25 - T 11 N - R 16 E McINTOSH COUNTY



Course No.	Distance	Bearing	Course No.	Distance	Bearing
1	660.49	S 89° 54' 22" W			
2	1151.37	S 0° 03' 39" W			
3	366.85	N 63° 33' 51" W			
4	330.46	S 89° 56' 55" W			

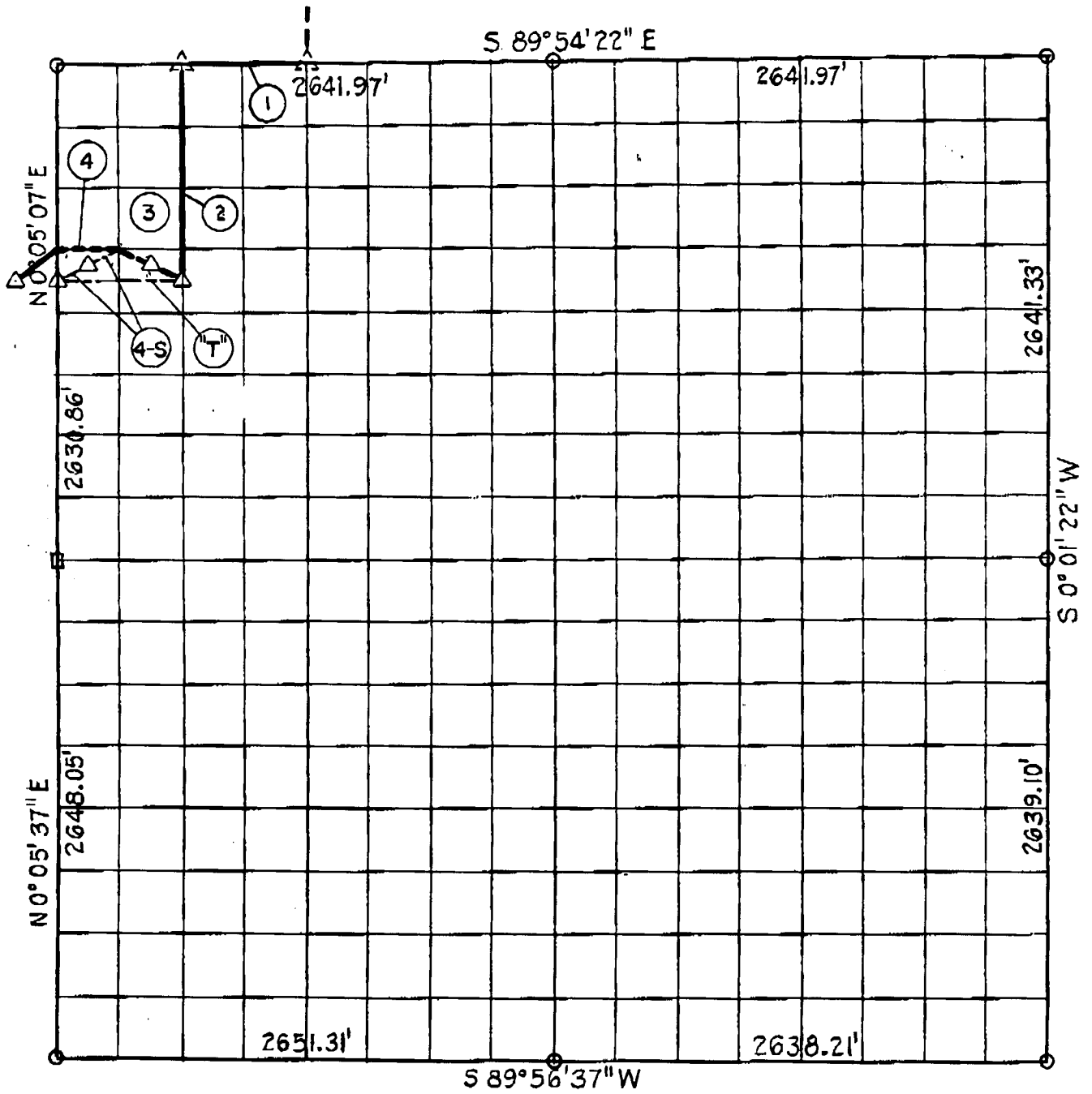
Book No. E-1043 Date: July, 1965

146

I, Charles J. Finklea, A Registered Professional Engineer, do hereby certify that the above is a true and accurate survey of Sec. 25-T 11 N-R 16 E as made under my supervision.

*Charles J. Finklea*  
 Charles J. Finklea  
 Reg. Prof. Eng'r. No. 1063

SEC. 25 - T 11 N - R 16 E. MCINTOSH COUNTY



Course No.	Distance	Bearing	Course No.	Distance	Bearing
1	660.49	S 89° 54' 22" W			
2	1151.37	S 0° 03' 39" W			
3	368.85	N 63° 33' 51" W			
4	330.46	S 89° 56' 55" W			