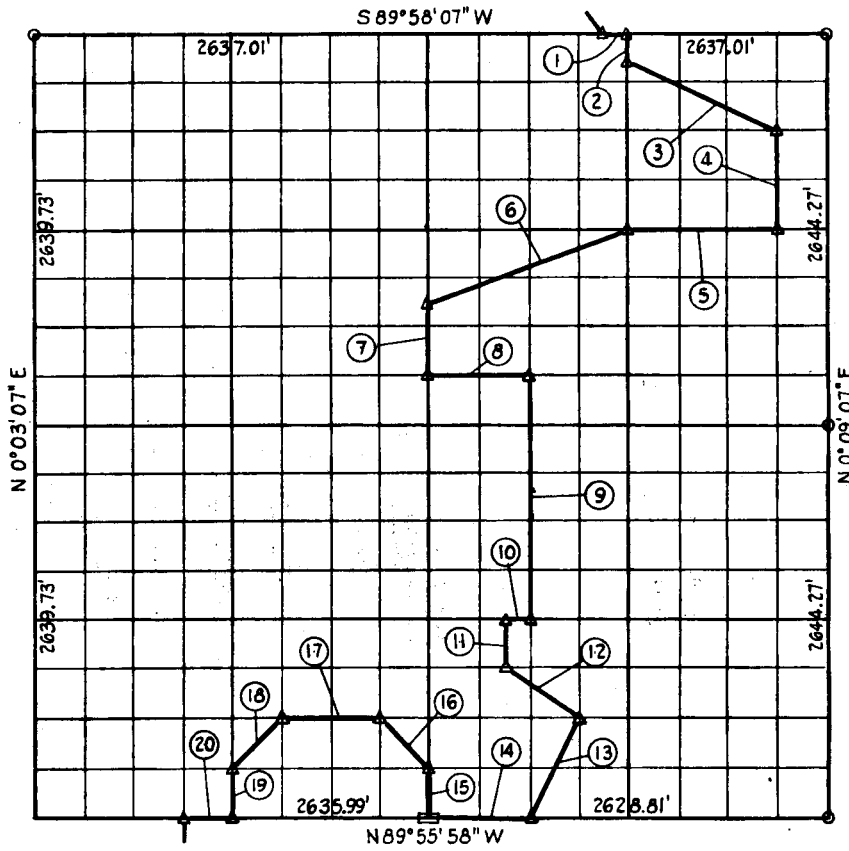


SEC 35 - T 11 N R 16 E COUNTY MEINTO.



Course Number	Distance	Bearing	Course Number	Distance	Bearing
1	164.81	N 89° 58' 07" E	11	330.30	S 0° 04' 47" W
2	165.20	S 0° 06' 27" W	12	593.37	S 56° 07' 16" E
3	1104.79	S 63° 21' 59" E	13	738.06	S 26° 32' 02" W
4	661.00	S 0° 08' 27" W	14	657.20	N 89° 55' 56" E
5	980.11	S 89° 59' 35" W	15	330.25	N 0° 03' 47" E
6	1404.10	S 69° 23' 44" W	16	466.49	N 44° 52' 39" E
7	495.37	S 0° 03' 47" W	17	659.53	N 89° 56' 43" W
8	659.78	S 89° 59' 18" E	18	466.44	S 45° 00' 16" E
9	1652.04	S 0° 05' 07" E	19	330.11	S 0° 03' 27" E
10	164.43	N 89° 57' 27" W	20	329.56	N 89° 55' 56" E

Book No. 1-746

Date: Jan, 1965

157

I, Charles J. Finklea, a Registered Professional Engineer, do hereby certify that the above is a true and accurate survey of Sec. 35, T 11 N, R 16 E as made under my supervision.

*Charles J. Finklea*  
 Reg. Prof. Eng'r. No 1063

12, 1965