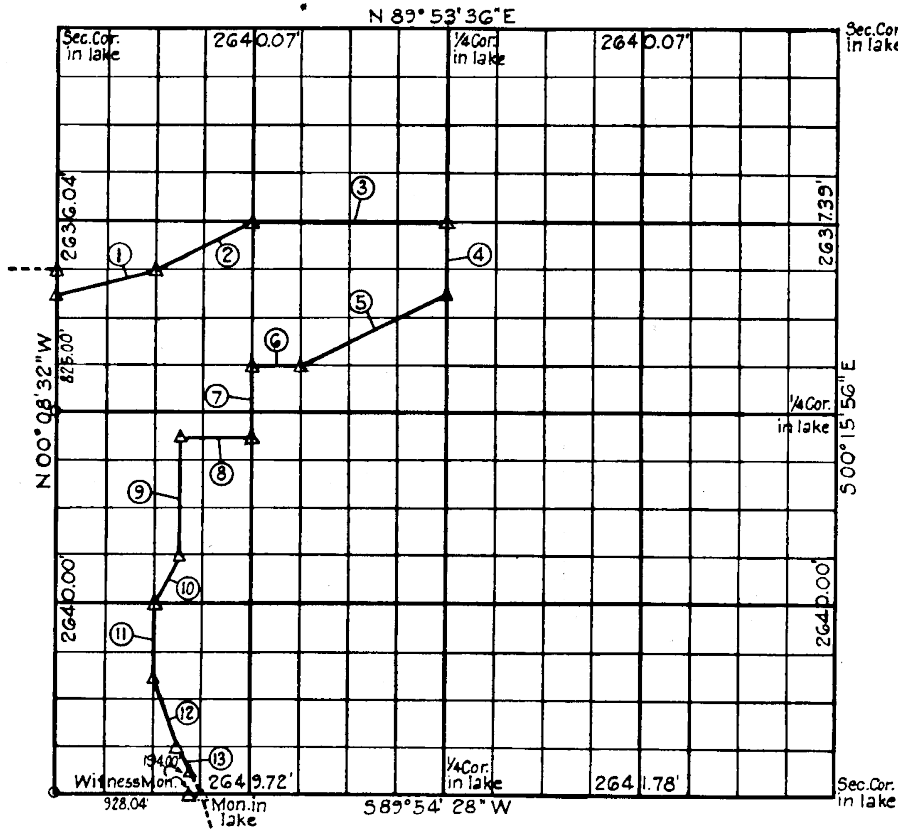


4 T. 11N R. 16E COUNTY McHENRY ILL



Course Number	Distance	Bearing	Course Number	Distance	Bearing
1	680.92	N 75° 53' 05\" E	12	522.16	S 18° 39' 17\" E
2	738.06	N 63° 20' 57\" E	13	369.44	S 26° 48' 31\" E
3	1320.50	N 89° 54' 28\" E			
4	494.65	S 0° 14' 48\" E			
5	1107.11	S 63° 20' 56\" W			
6	330.54	S 89° 54' 28\" W			
7	495.00	S 0° 11' 40\" E			
8	495.98	S 89° 54' 28\" W			
9	825.00	S 0° 10' 29\" E			
10	368.84	S 26° 26' 17\" W			
11	495.00	S 0° 10' 06\" E			

Book No. E-11145 Date: May, 1971

I, Charles J. Finklea, hereby certify that the above plat is a true and correct representation of the survey made in Section 4, T11N, R16E.

**LEGEND**  
 Δ Monument  
 □ Original Stone  
 ○ Iron Pin

*Charles J. Finklea*  
 Registered Land Surveyor No. 35