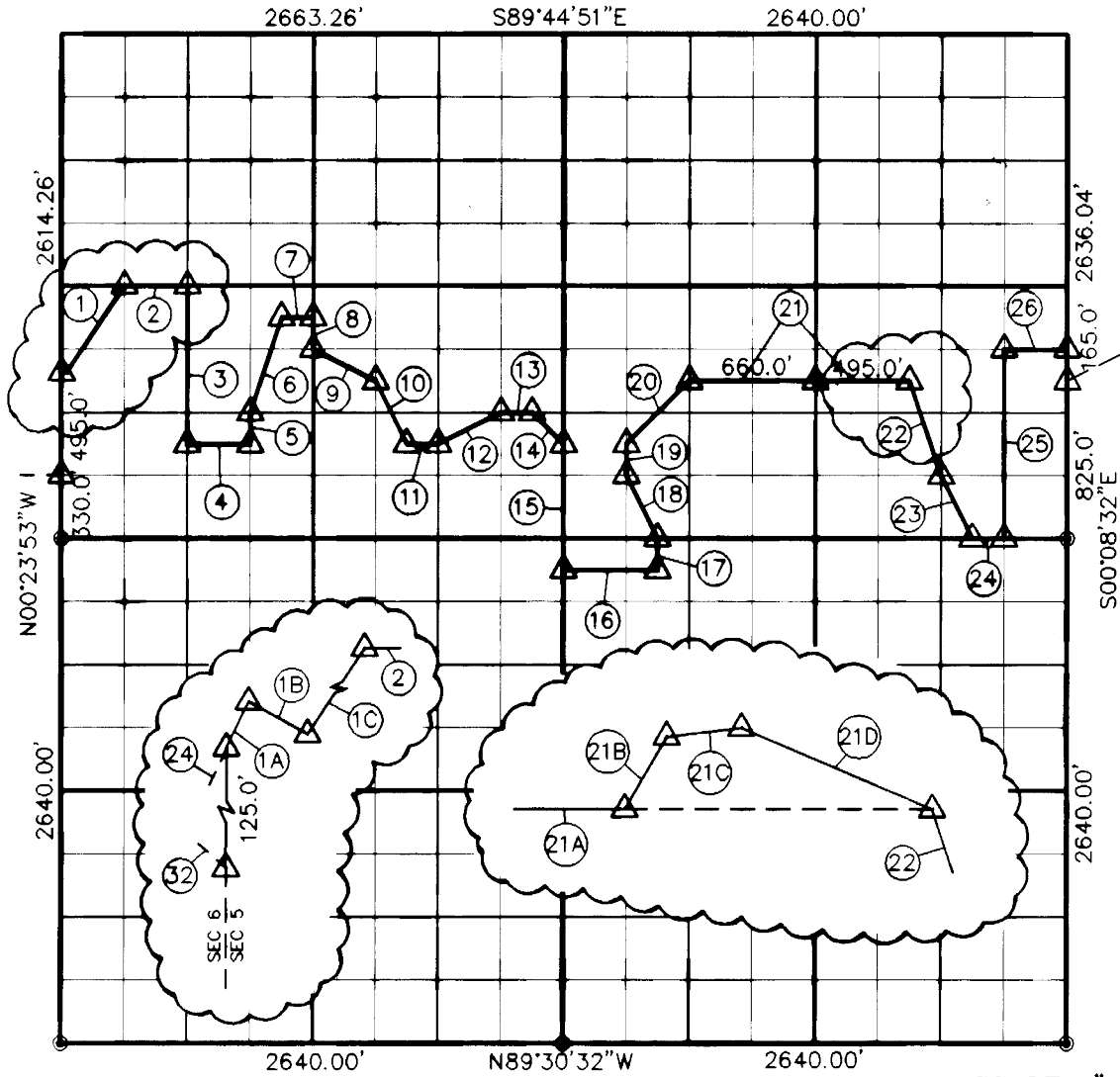


LAKE EUFAULA, OKLAHOMA

SEC. 5 , T 11 N , R 16 E , McINTOSH COUNTY

REVISED



SCALE 1" = 1000'

Course	Bearing	Distance	Course	Bearing	Distance
1	N33°33'13"E	591.13	15	S00°08'32"E	660.00
1A*	N25°25'23"E	18.39	16	S89°30'32"E	496.75
1B*	S61°32'07"E	24.30	17	N00°08'32"W	164.92
1C*	N33°33'13"E	538.62	18	N26°34'46"W	370.57
2	S89°30'32"E	332.21	19	N00°08'32"W	165.00
3	S00°20'02"E	825.00	20	N45°10'29"E	464.10
4	S89°30'32"E	331.74	21	S89°30'32"E	1155.00
5	N00°18'07"W	165.00	21A**	S89°30'32"E	969.02
6	N18°19'18"E	519.93	21B**	N30°56'41"E	50.26
7	S89°30'32"E	166.06	21C**	N83°44'35"E	45.68
8	S00°16'12"E	165.00	21D**	S66°35'12"E	125.01
9	S63°13'43"E	372.64	22	S18°30'46"E	523.50
10	S26°46'30"E	371.22	23	S26°34'46"E	370.57
11	S89°30'32"E	165.87	24	S89°30'32"E	165.00
12	N63°54'54"E	368.79	25	N00°08'32"W	990.00
13	S89°30'32"E	165.91	26	S89°30'32"E	330.00