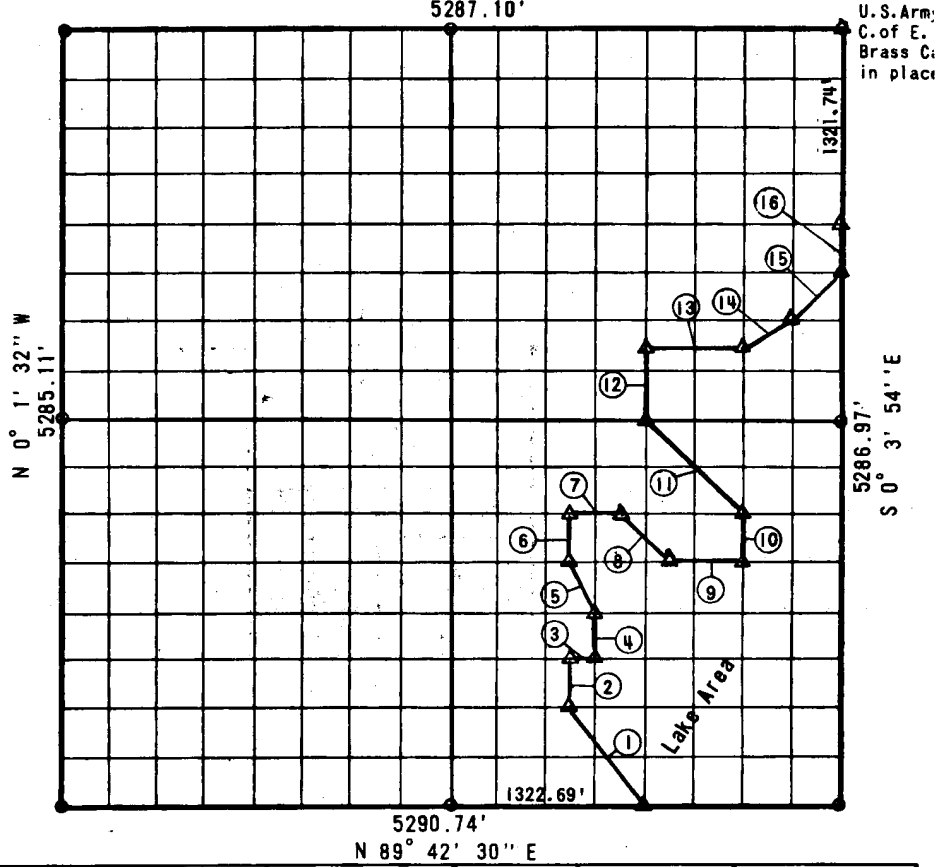


PARTIAL BOUNDARY SURVEYS
EUFAULA RESERVOIR, ANADIAN RIVER, OKLA OMA
C. 36, T-11 -N, R-17 -E, McIntosh COUNTY, OF AHOMA
N 89° 41' 17" E
5287.10'



COURSE NO.	DISTANCE	BEARING	COURSE NO.	DISTANCE	BEARING
1	823.36	N 37° 00' 36" W			
2	331.18	N 0° 13' 6" W			
3	165.31	N 89° 42' 16" E			
4	330.40	N 0° 3' 10" W			
5	368.81	N 26° 40' 50" W			
6	330.40	N 0° 3' 5" W			
7	330.59	N 89° 42' 3" E			
8	466.40	S 45° 11' 32" E			
9	495.90	N 89° 42' 7" E			
10	330.42	N 0° 3' 36" W			
11	932.79	N 45° 11' 34" W			
12	495.61	N 0° 3' 18" W			
13	661.07	N 89° 41' 47" E			
14	370.15	N 63° 11' 13" E			
15	468.35	N 44° 49' 24" E			
16	330.44	N 0° 3' 54" W			

Field Book No. E-1162

Date Feb. 1972

BY GROSSMAN & KEITH ENGINEERING CO.

FOR

DEPARTMENT OF THE ARMY, CORPS OF ENGINEERS, TULSA DISTRICT
UNDER CONTRACT NO. DACW 56-7 -C -0

I, Guy N. Keith, a Registered Land Surveyor in the State of Oklahoma, do hereby certify that the above plat is a true and accurate survey of Section 36, T-11-N, R-17-E as made under my supervision.

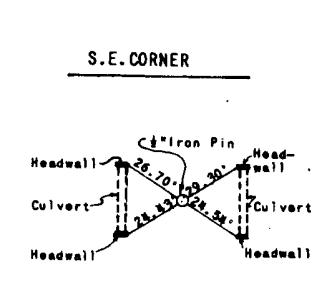
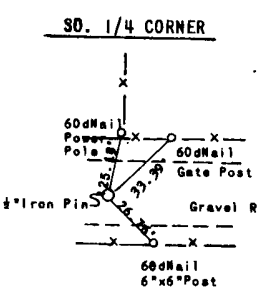
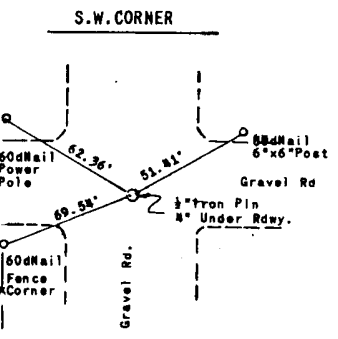
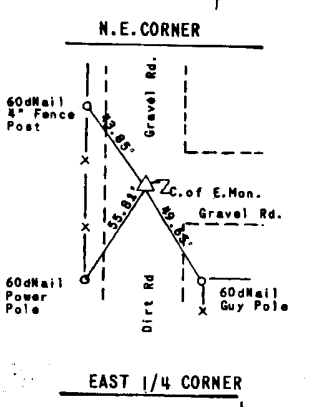
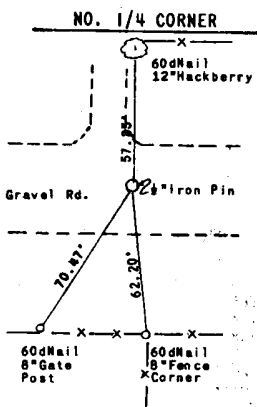
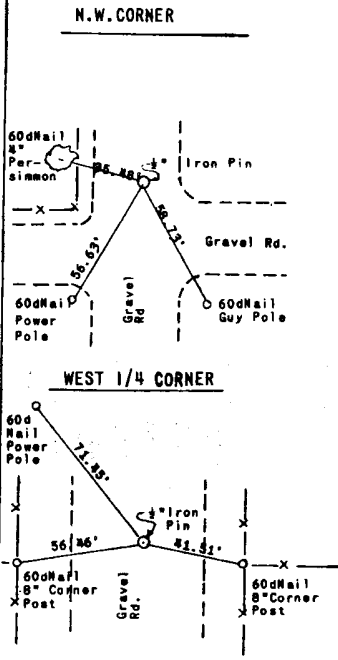
Guy N. Keith
 No. 547 (Oklahoma)

LEGEND

- Δ Std. C. of E. Conc Monument
- Iron Pin
- Original Pin

158

EUFULA RESERVOIR
 CANADIAN RIVER, OKLAHOMA
 SECTION AND QUARTER SECTION CORNER
 REFERENCES FOR
 SEC. 36, T11N, R17E COUNTY-McINTOSH



Scale: 1" = 50'
 Date: February 1972
 Field Book No.: E-1162

- LEGEND**
- △ - Monument
 - - Original Corner
 - - Iron Pin

158