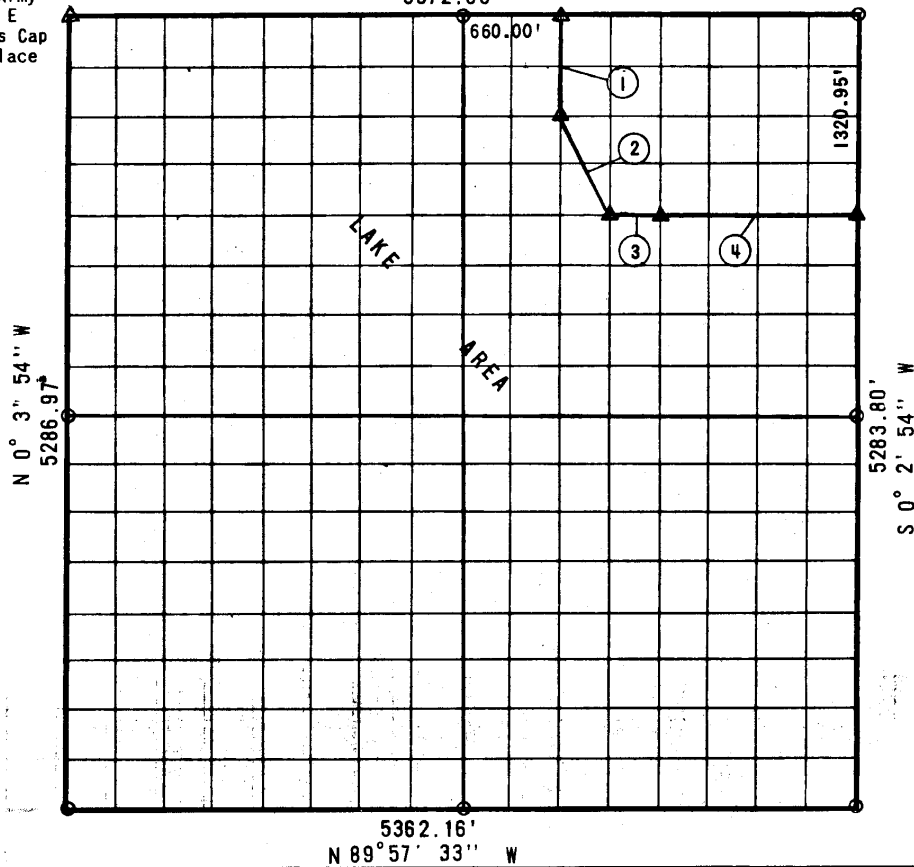


EUFAULA RESERVOIR, CANADIAN RIVER, OKLAHOMA
 T. 31, R-11-N, R-18-E, McIntosh COUNTY, OKLAHOMA
 S 89° 55' 32" E
 5372.63'

U.S. Army
 C of E
 Brass Cap
 in place



COURSE NO.	DISTANCE	BEARING	COURSE NO.	DISTANCE	BEARING
1	660.62	S 0° 2' 54" W			
2	738.55	S 26° 29' 30" E			
3	330.00	S 89° 56' 2" E			
4	1320.00	S 89° 56' 2" E			

Field Book No. E-1164 Date Feb. 1972

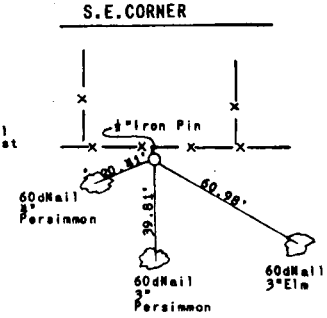
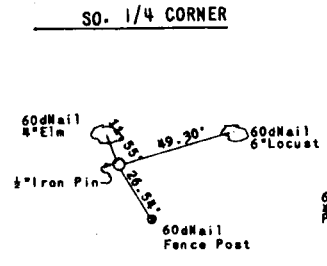
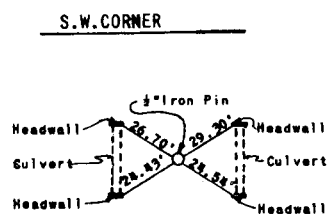
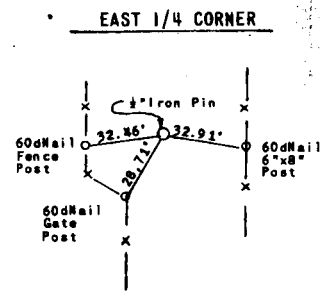
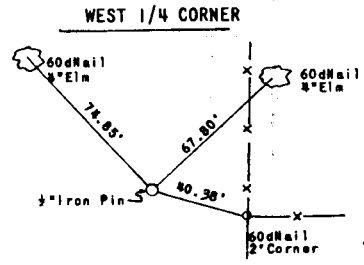
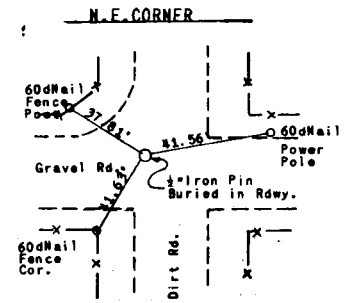
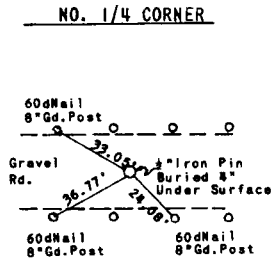
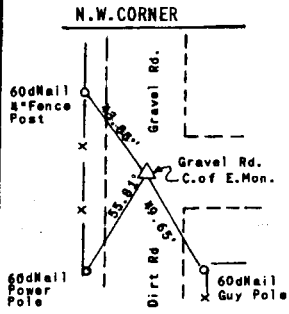
BY GROSSMAN & KEITH ENGINEERING CO.
 FOR
 DEPARTMENT OF THE ARMY, CORPS OF ENGINEERS, TULSA DISTRICT
 UNDER CONTRACT NO. DACW 56-7-C-0

I, Guy N. Keith, a Registered Land Surveyor in the State of Oklahoma, do hereby certify that the above plot is a true and accurate survey of Section 31, T- 11-N, R- 18-E as made under my supervision.

Guy N. Keith
 Reg. No. 541 (Oklahoma)

LEGEND
 Δ Std. C. of E. Conc. Monument
 ○ Iron Pin
 □ Original Pin

EUFALLA RESERVOIR
 CANADIAN RIVER, OKLAHOMA
 SECTION AND QUARTER SECTION CORNER
 REFERENCES FOR
 SEC. 31, T11N, R18E COUNTY-McINTOSH



Scale: 1" = 50'
 Date: February 1972
 Field Book No.: E-1164

- LEGEND**
- △ - Monument
 - - Original Corner
 - - Iron Pin