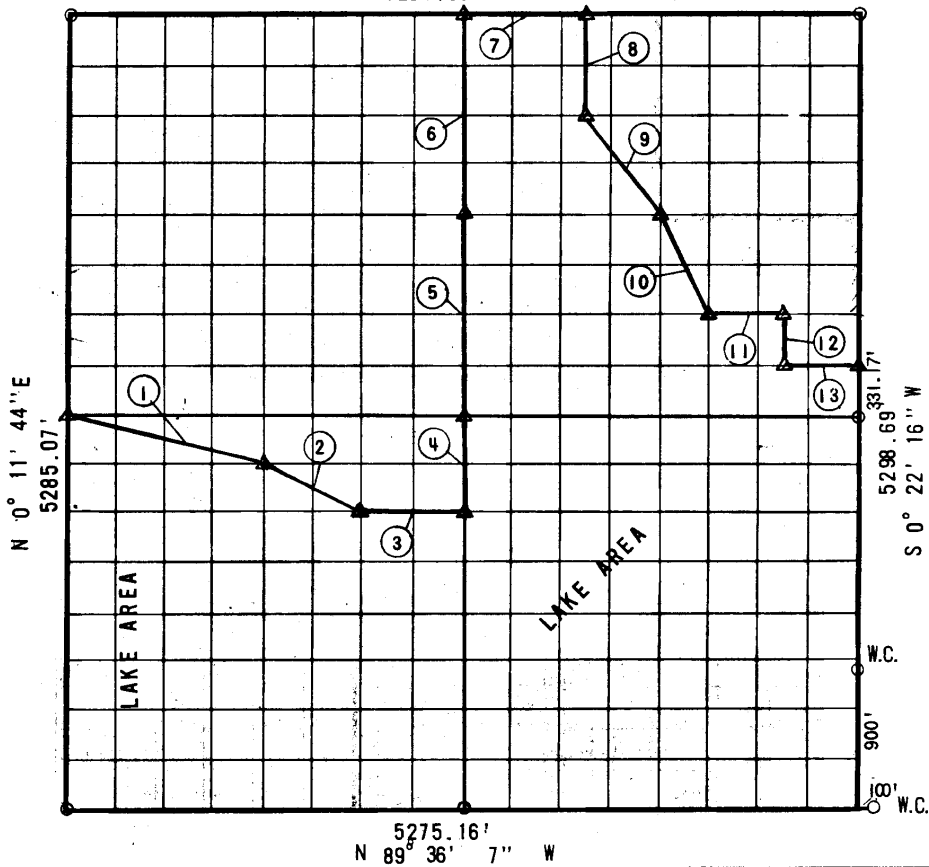


FAULA RESERVATION INDIAN RIVER, C. 1 A  
 Section 33, T-11-N, R-18-E, McIntosh COUNTY, OKLAHOMA  
 S 89° 44' 59" E  
 5291.36'



COURSE NO.	DISTANCE	BEARING	COURSE NO.	DISTANCE	BEARING
1	1362.02	S 75° 37' 53" E			
2	738.81	S 63° 4' 54" E			
3	660.15	S 89° 39' 27" E			
4	661.48	N 0° 17' 0" E			
5	1322.97	N 0° 17' 0" E			
6	1322.97	N 0° 17' 0" E			
7	826.77	S 89° 44' 59" E			
8	661.75	S 0° 18' 39" W			
9	824.88	S 36° 33' 55" E			
10	741.47	S 26° 11' 15" E			
11	495.50	S 89° 41' 40" E			
12	331.09	S 0° 21' 17" W			
13	495.40	S 89° 41' 7" E			

Field Book No. E-1166

Date Feb 1972

BY GROSSMAN & KEITH ENGINEERING CO.

FOR

DEPARTMENT OF THE ARMY, CORPS OF ENGINEERS, TULSA DISTRICT  
 UNDER CONTRACT NO. DACW 56-7 - C - 0

I, Guy N. Keith, a Registered Land Surveyor in the State of Oklahoma, do hereby certify that the above plat is a true and accurate survey of Section 33, T-11-N, R-18-E as made under my supervision.

*Guy N. Keith*  
 Reg. No. 547 (Oklahoma)

LEGEND

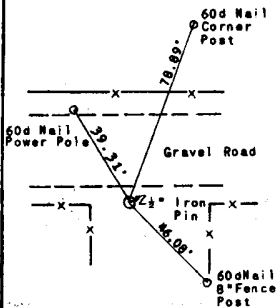
- △ Std. C. of E. Conc. Monument
- Iron Pin
- Original Pin

161

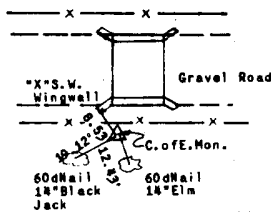
EUFAL LAKE RESERVOIR  
 CANADIAN RIVER, OKLAHOMA  
 SECTION AND QUARTER SECTION CORNER  
 REFERENCES FOR  
 SEC. 33, T11N, R18E COUNTY-McINTOSH



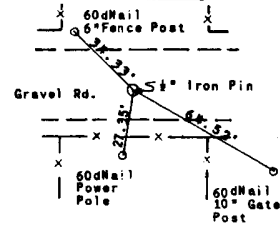
N.W. CORNER



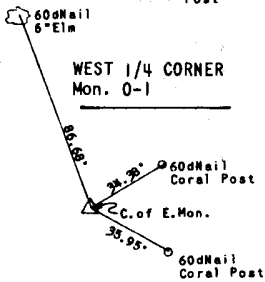
N. 1/4 CORNER  
 Mon. 6-7  
 BOUNDARY LINE



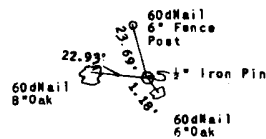
N.E. CORNER



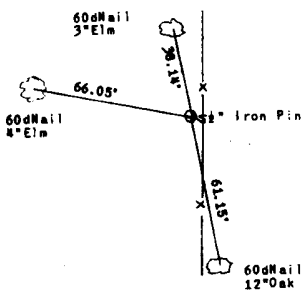
WEST 1/4 CORNER  
 Mon. 0-1



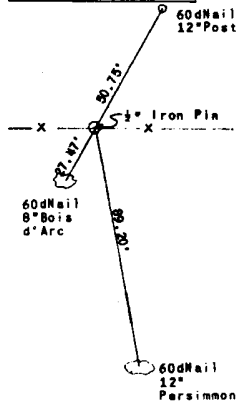
EAST 1/4 CORNER



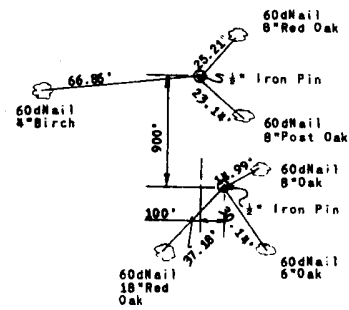
S.W. CORNER



SO. 1/4 CORNER



S.E. CORNER



Scale: 1" = 50'

Date: February 1972

Field Book No.: E-1166

LEGEND

- △-Monument
- Original Corner
- Iron Pin