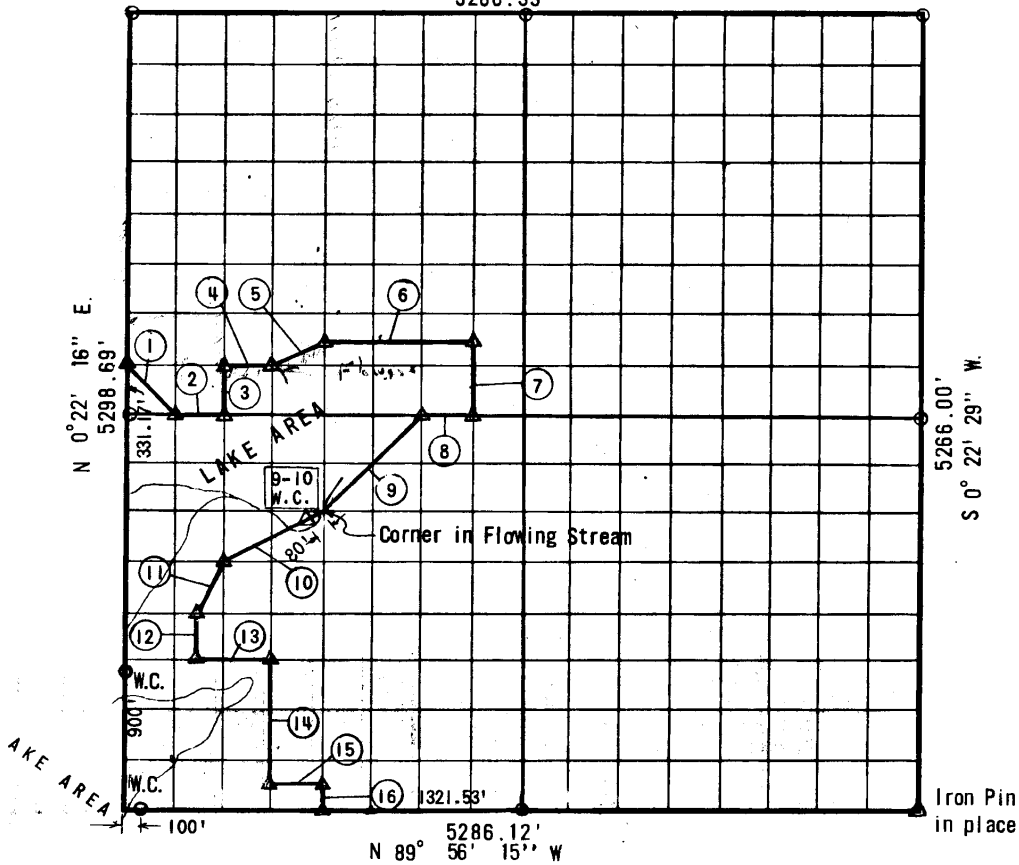


PARTIAL SURVEY
 TULSA RESERVOIR () DIAN RIVER, OK ()
 34, T- 11-N, R- 18 -E Antosh COUNTY, OK () MA ✓

S. 89° 34' 59" E.
 5286.39'



COURSE NO.	DISTANCE	BEARING	COURSE NO.	DISTANCE	BEARING
1	467.26	S 44° 37' 37" E			
2	330.39	S 89° 45' 37" E			
3	330.91	N 0° 22' 18" E			
4	330.39	S 89° 44' 17" E			
5	369.73	N 63° 42' 1" E			
6	991.17	S 89° 43' 37" E			
7	495.41	S 0° 22' 22" W			
8	330.39	N 89° 45' 37" W			
9	935.94	S 45° 16' 58" W			
10	739.91	S 63° 37' 46" W			
11	370.42	S 26° 51' 22" W			
12	330.98	S 0° 22' 17" W			
13	495.58	S 89° 52' 16" E			
14	826.96	S 0° 22' 19" W			
15	330.38	S 89° 55' 35" E			
16	165.33	S 0° 22' 19" W			

Field Book No. E-1167

Date Feb. 1972

BY GROSSMAN & KEITH ENGINEERING CO.

FOR

DEPARTMENT OF THE ARMY, CORPS OF ENGINEERS, TULSA DISTRICT
 UNDER CONTRACT NO. DACW 56-7 -C -0

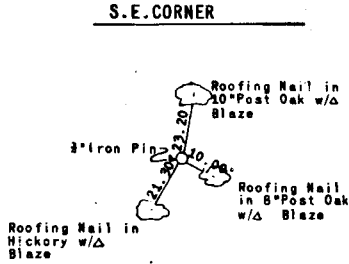
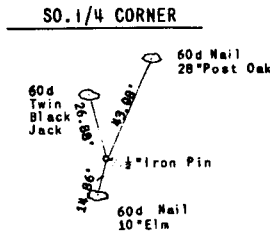
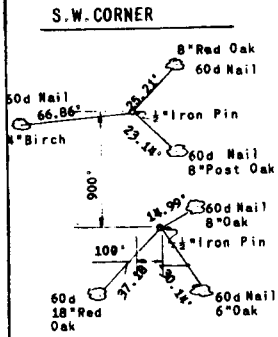
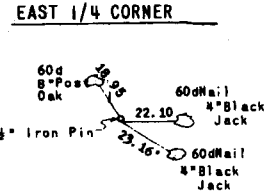
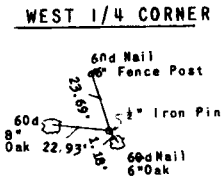
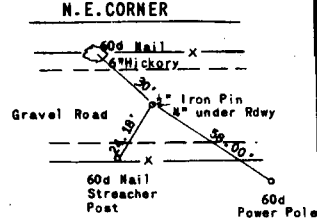
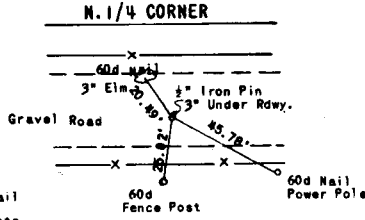
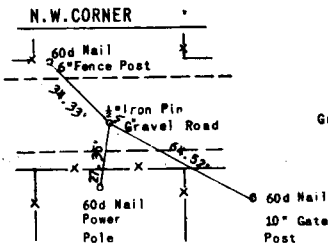
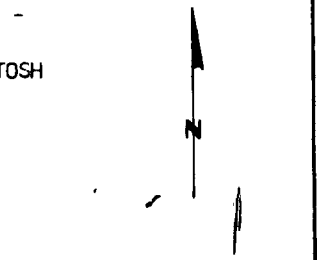
I, Guy N. Keith, a Registered Land Surveyor in the State of Oklahoma, do hereby certify that the above plat is a true and accurate survey of Section 34, T- 11-N, R- 18-E as made under my supervision.

Guy N. Keith

LEGEND

- △ Std. C. of E. Conc. Monument
- Iron Pin
- Original Pin

EUFaul 01R
 CANADIAN RIVER, OKLAHOMA
 SECTION AND QUARTER SECTION CORNER
 REFERENCES FOR
 SEC. 34, T11N, R18E COUNTY- McINTOSH



Scale: 1" = 50'
 Date: February 1972
 Field Book No. E-1167

- LEGEND**
- △ - Monument
 - - Original Corner
 - - Iron Pin