

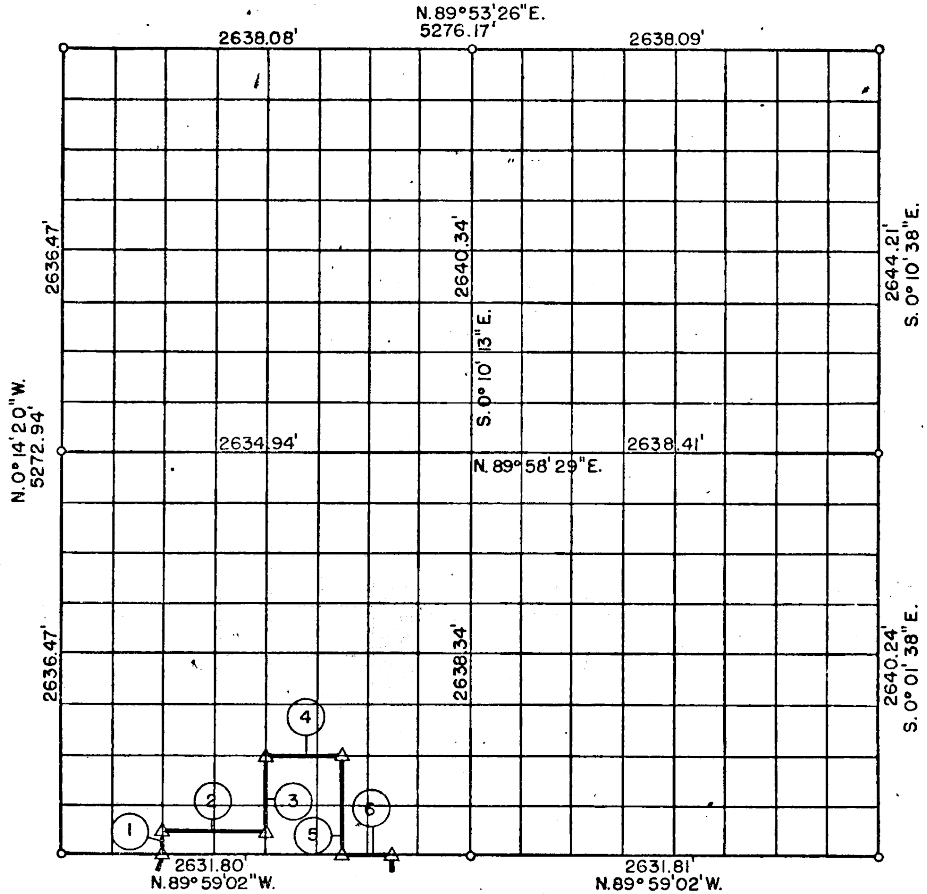
PARTIAL E. BOUNDARY SURVEYS

EUFULA LAKE

DEEP FORK RIVER

Performed Under Contract Number DACW 56-75-C-0137

SEC. 12, T 12 N, R 14 E. MCINTOSH COUNTY



Course No.	Distance	Bearing	Course No.	Distance	Bearing
1	164.81'	N. 0° 13' 18" W.			
2	658.00'	S. 89° 59' 13" E.			
3	494.51'	N. 0° 12' 17" W.			
4	493.61'	S. 89° 59' 40" E.			
5	659.44'	S. 0° 11' 30" E.			
6	328.98'	S. 89° 59' 02" E.			

Field Book No. E 1223 Date: OCTOBER, 1975

**PLUMMER-BRUMMETT, INC.**  
 CONSULTING ENGINEERS & SURVEYORS  
 2504 E. 14th Pl., Tulsa, Okla., 74104, Tel. (918) 939-2251

**CERTIFICATE OF SURVEY**  
 I HEREBY CERTIFY THAT THE ABOVE PLAT IS A TRUE AND CORRECT REPRESENTATION OF THE SURVEY MADE IN SECTION 12, T 12 N, R 14 E, MCINTOSH COUNTY, OKLAHOMA.

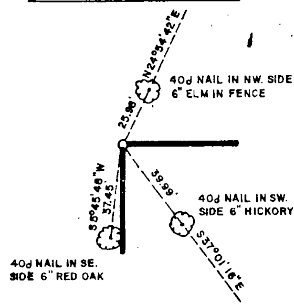
- LEGEND**
- ▲ MONUMENT
  - ◻ ORIGINAL CORNER
  - IRON PIN

Under the Supervision of  
**U.S. ARMY ENGINEER DISTRICT, TULSA**  
 CORPS OF ENGINEERS

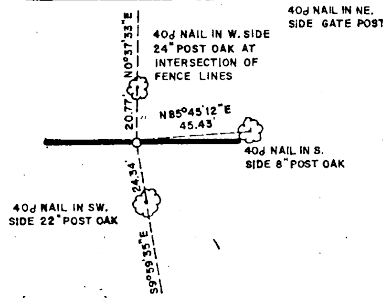
REGISTERED LAND SURVEYOR

E LAKE  
DEE FORK RIVER  
SECTION AND QUARTER SECTION CORNER  
REFERENCES FOR  
SEC. 12, T. 12 N, R. 14 E, MCINTOSH COUNTY

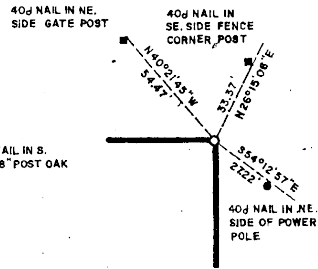
N.W. CORNER



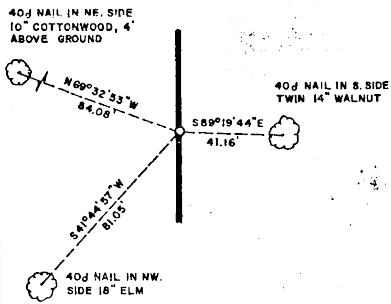
NORTH 1/4 COR.



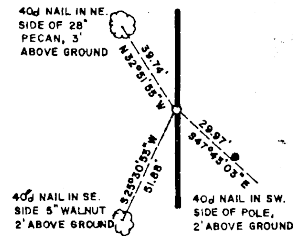
N.E. CORNER



WEST 1/4 COR.

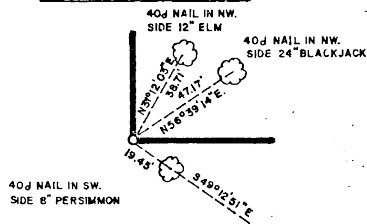


EAST 1/4 COR.

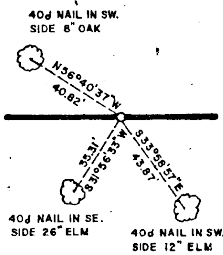


SCALE: 1" = 50'

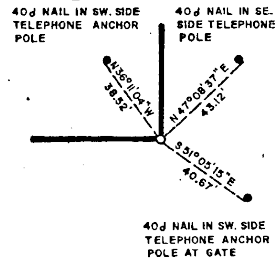
S.W. CORNER



SOUTH 1/4 COR.



S.E. CORNER



- LEGEND**
- A MONUMENT
  - G ORIGINAL CORNER
  - O IRON PIN

**PLUMMER-BRUMMETT, INC.**  
CONSULTING ENGINEERS & SURVEYORS  
2504 E. 14th Pl., Tulsa, Okla., 74104, Tel. (918) 939-2251

FIELD BOOK NO. E-1223  
DATE: OCTOBER, 1975

Under the Supervision of  
**U.S. ARMY ENGINEER DISTRICT, TULSA**  
CORPS OF ENGINEERS

*[Signature]*  
REGISTERED LAND SURVEYOR