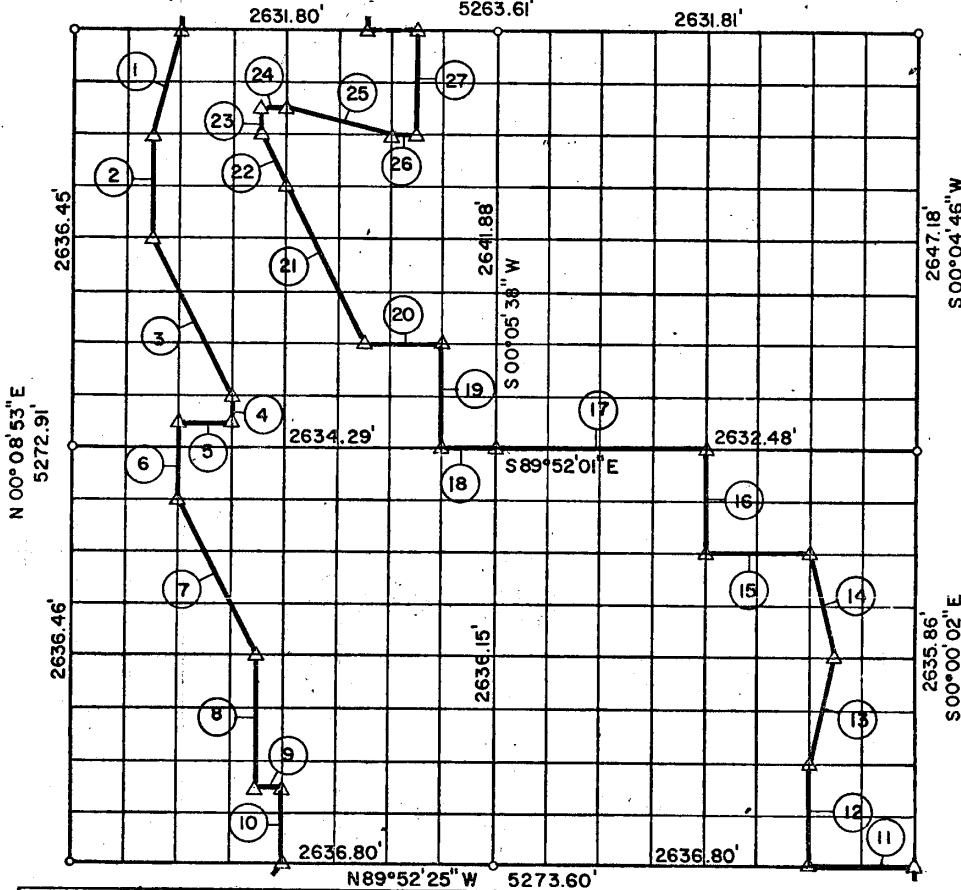


PARTIAL BOUNDARY SURVEYS  
 EUFAULA LAKE  
 DEEP FORK RIVER

Performed Under Contract Number DACW 56-75-C-0137

SEC. 13, T12 N, R14 E MCINTOSH COUNTY

S89°59'02"E



Course No.	Distance	Bearing	Course No.	Distance	Bearing
1	679.92'	S 14° 08' 18" W	14	679.54'	N 14° 00' 02" W
2	659.37'	S 00° 08' 16" W	15	658.39'	N 89° 52' 07" W
3	1105.35'	S 26° 24' 01" E	16	659.00'	N 00° 02' 48" E
4	164.90'	S 00° 07' 40" W	17	1316.24'	N 89° 52' 01" W
5	329.27'	N 89° 52' 27" W	18	329.29'	N 89° 52' 01" W
6	494.41'	S 00° 08' 04" W	19	660.29'	N 00° 06' 02" E
7	1105.23'	S 26° 25' 27" E	20	493.81'	N 89° 53' 46" W
8	823.85'	S 00° 07' 28" W	21	1105.90'	N 26° 24' 00" W
9	164.77'	S 89° 52' 21" E	22	368.44'	N 26° 24' 00" W
10	494.31'	S 00° 07' 16" W	23	164.93'	N 00° 07' 28" E
11	659.20'	N 89° 52' 25" W	24	164.51'	S 89° 57' 43" E
12	658.99'	N 00° 01' 23" E	25	678.25'	S 75° 52' 49" E
13	678.95'	N 14° 03' 32" E	26	164.53'	S 89° 57' 17" E
			27	660.21'	N 00° 06' 15" E

Field Book No. E 1222

Date: OCTOBER, 1975

PLUMMER-BRUMMETT, INC.  
 CONSULTING ENGINEERS & SURVEYORS  
 2504 E. 14th Pl., Tulsa, Okla., 74104, Tel. (918) 939-2251

20  
 CERTIFICATE OF SURVEY  
 I HEREBY CERTIFY THAT THE  
 ABOVE PLAT IS A TRUE AND  
 CORRECT REPRESENTATION OF  
 THE SURVEY MADE IN SECTION  
 13, T 12 N, R 14 E, MCINTOSH  
 COUNTY, OKLAHOMA.

- LEGEND**
- ▲ MONUMENT
  - ORIGINAL CORNER
  - IRON PIN

Under the Supervision of  
 U.S. ARMY ENGINEER DISTRICT, TULSA