

PARTIAL BOUNDARY SURVEYS

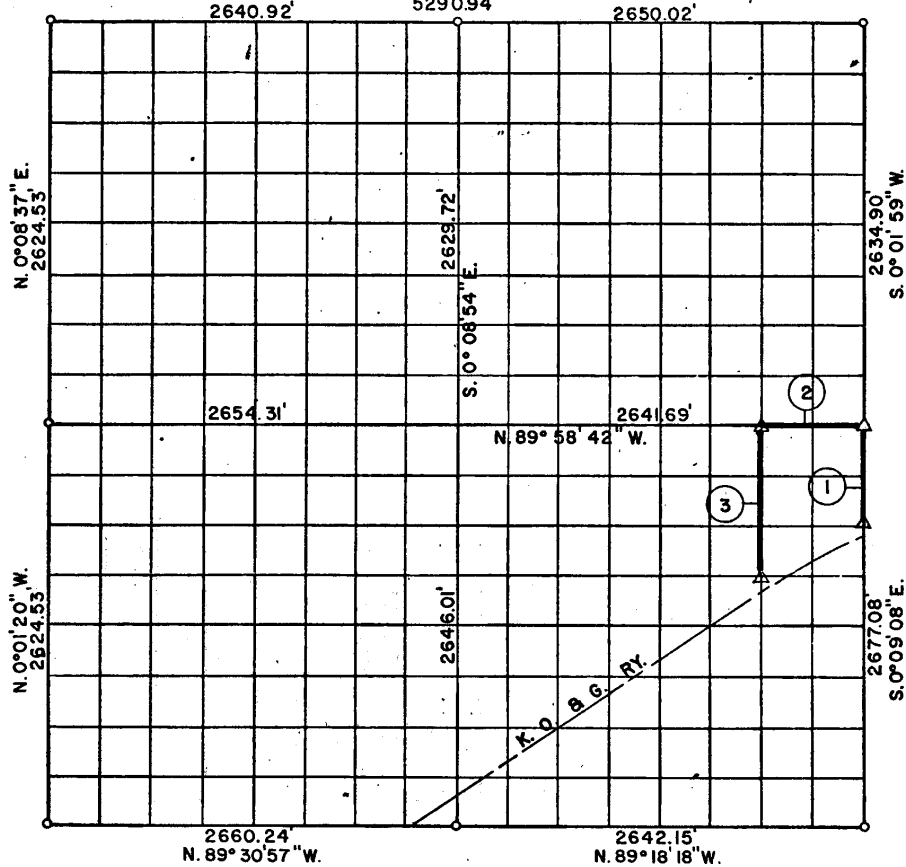
EUFAULA LAKE

DEEP FORK RIVER

Performed Under Contract Number DACW 56-75-C-0137

SEC. 21, T 12 N, R 14 E OKMULGEE COUNTY

N. 89° 54' 33" E.
5290.94'



Course No.	Distance	Bearing	Course No.	Distance	Bearing
1	631.50'	N. 0° 09' 08" W.			
2	660.42'	N. 89° 58' 42" W.			
3	985.43'	S. 0° 09' 05" E.			

Field Book No. E 1218 Date: OCTOBER, 1975

PLUMMER-BRUMMETT, INC.
CONSULTING ENGINEERS & SURVEYORS
2504 E. 14th Pl., Tulsa, Okla., 74104, Tel. (918) 939-2251

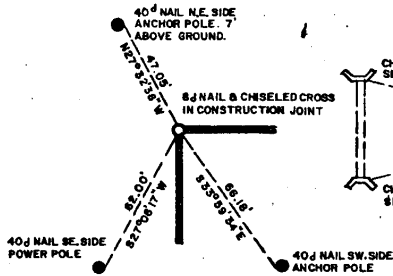
Under the Supervision of
U.S. ARMY ENGINEER DISTRICT, TULSA
CORPS OF ENGINEERS

31
CERTIFICATE OF SURVEY
I HEREBY CERTIFY THAT THE
ABOVE PLAT IS A TRUE AND
CORRECT REPRESENTATION OF
THE SURVEY MADE IN SECTION
21, T 12 N, R 14 E, OKMULGEE
COUNTY, OKLAHOMA.
[Signature]
REGISTERED LAND SURVEYOR

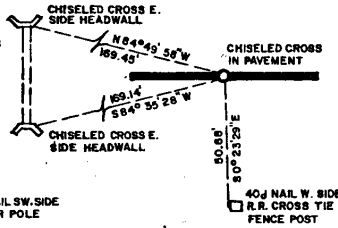
- LEGEND
- ▲ MONUMENT
 - ORIGINAL CORNER
 - IRON PIN

E AULA LAKE
DEEP FORK RIVER
SECTION AND QUARTER SECTION CORNER
REFERENCES FOR
SEC. 21, T12 N, R14 E, OKMULGEE COUNTY

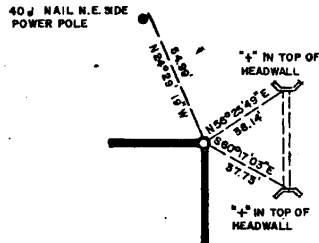
N.W. CORNER



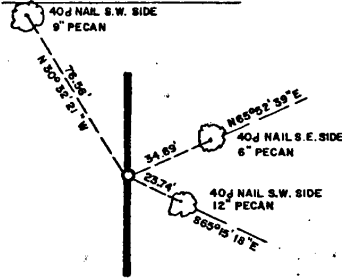
NORTH 1/4 COR.



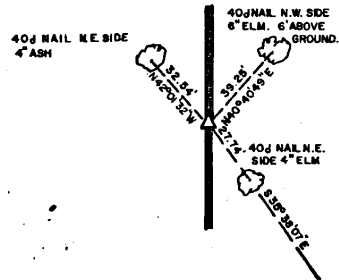
N.E. CORNER



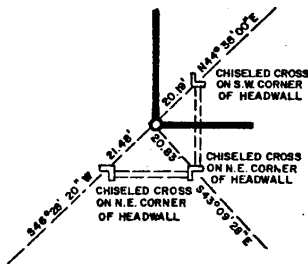
WEST 1/4 COR.



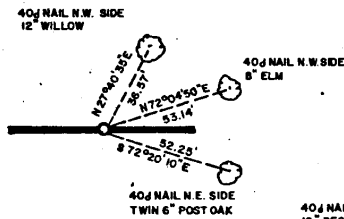
EAST 1/4 COR.



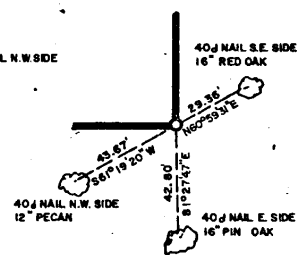
S.W. CORNER



SOUTH 1/4 COR.



S.E. CORNER



- LEGEND
- A MONUMENT
 - ORIGINAL CORNER
 - IRON PIN

PLUMMER-BRUMMETT, INC.
CONSULTING ENGINEERS & SURVEYORS
2504 E. 14th Pl, Tulsa, Okla., 74104, Tel. (918) 939-2251

FIELD BOOK NO. E-1218
DATE: OCTOBER, 1975

Under the Supervision of
U.S. ARMY ENGINEER DISTRICT, TULSA
CORPS OF ENGINEERS

REGISTERED LAND SURVEYOR